



# Nuvola H75

design Midj R&D

Nuvola stool with four legs base completely upholstered with hide, regenerated hide, leather, ecoleather, fabric or custom's fabric. Available with white or graphite lacquered legs and for the leather, ecoleather and fabric version possibility to upholster the back face with a different fabric.



## Finishing and Materials

### Structure



White Steel



Grafite Steel

### Coating



**Rigenerated Hide**  
10 colors



**Hide**  
19 colors



**Inca Ecoleather**  
17 colors



**Magic Ecoleather**  
17 colors



**Vintage Ecoleather**  
4 colors



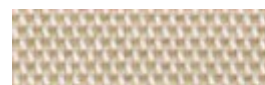
**Special Leather**  
8 colors



**Fiore Leather**  
15 colors



**Vintage Leather**  
4 colors



**Pix Fabric**  
13 colors



**Mirage Fabric**  
16 colors



**Natural Wool Fabric**  
15 colors



**Long Life Fabric**  
13 colors



**Bubble fabric**  
14 colors

## Dimensions



Dimension	cm	inch
A	105	41.3

Dimension	cm	inch
B	44	17.3
C	48	18.9
D	66	26

---

## Volumetric Details

Weight 9.5

Volume 0.23 mc

Package 1

---

## Gallery



---

## Downloads

[Nuvola H75 brochure \(pdf\)](http://www.midj.com/images/uploads/resources/nuvola.pdf) - <http://www.midj.com/images/uploads/resources/nuvola.pdf>

---

## Materials Certifications

### Inca Ecoleather

Martindale: 50.000 cycles Composition: 6% Cotton, 6% Polyester, 88% PVC Shrinking about: 1% Fire retardant fabric: Classe 1IM, BS 5852 Part. 1, IMO RES. A.652(16)

### Magic Ecoleather

Martindale: 150.000 cycles Composition: 31% Cotton, 48% Polyurethane, 21% Polyester Shrinking about: 1% Fire retardant ecoleather: Classe 1IM, BS 5852 Part. 1, Cigaret Test, Match Test

### Vintage Ecoleather

Ecoleather phtalatic free - R.E.A.C.H. 1907/2006/EU Breathable ecoleather Composition: 90% PVC, 7% Polyurethane, 3% Cotton Shrinking about 1%

### Fiore Leather

BS 5852 parte 1; ISO 5402>50000 cicli; ISO 105B02 ? 5; ISO 3377-1 ?20 N; ISO 11644 ? 2.5 N/Cm; EN 1021/1-2; EN ISO 17233 -20°; IMO RES A 6528(16)

<b>Vintage Leather</b>	UNI EN ISO 105 B02 ?3; ISO 5402>50000 cicli; ISO 3377-1?20; UNI EN ISO 11640 Secco - Dry 50 c ?4 Umido - Wet 20 c ? 3; Sudore - Sweat 20 c ? 3
<b>Mirage Fabric</b>	Martindale: 100.000 cycles Composition: 100% Polyester Shrinking about 1% Fire retardant fabric: classe 1IM, B1 DIN 4102, M1, B1 OENORM Part.1, BS 5852 Crib 5, EN 1021, USA Calif. Bull 117, IMO 688 (17) - IMO 563 (14) - IMO 653 (16)
<b>Natural Wool Fabric</b>	Martindale: 100.000 cycles Composition: 70% Wool, 25% Polyamid, 5% Fibers Shrinking about: 1% Fire retardant fabric: BS 5852 part. 1, Cigaret test, Match test
<b>Long Life Fabric</b>	Martindale 40.000 cycles Composition: 74% Polyester, 18% Cotton, 8% Acrylic Shrinking about 1%
<b>Bubble fabric</b>	Martindale: 35.000 cycles Composition: 100% Pes Fire retardant fabric: BS5852:2006 (p. 11 CRIB 5), EN1021-1, EN1021-2, UNI 9175:2010 - classe 1 im