



Zeus MT

Fixed table with structure in laquered steel. Top available in solid wood, glass, veneer wood or ceramic.



Finishing and Materials

Base



Grafite Steel

Top



Extraclear Transparent Glass



Veneered Flamed Walnut



Solid Walnut Bark



Solid Ash



Lead Ceramic



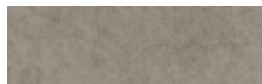
Cement Savoia Ceramic



Charcoal Savoia Ceramic



Oxide White Ceramic

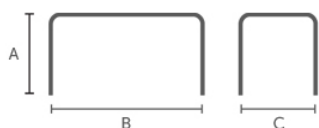


Oxide Sand Ceramic



Ceramic with effect calacatta marble
1 color

Dimensions



Dimension	A	B	C	D
	(cm)	(cm)	(cm)	(cm)
	(inch)	(inch)	(inch)	(inch)
200x100	76	200	100	(0)
	(29.9)	(78.7)	(39.4)	

Dimension	A	B	C	D
	(cm)	(cm)	(cm)	(cm)
	(inch)	(inch)	(inch)	(inch)
200x106	76	200	106	(0)
	(29.9)	(78.7)	(41.7)	
250x100	76	250	100	(0)
	(29.9)	(98.4)	(39.4)	
250x106	76	250	106	(0)
	(29.9)	(98.4)	(41.7)	
300x106	76	300	106	(0)
	(29.9)	(118.1)	(41.7)	

Volumetric Details

Weight 127
Volume 0.37 mc
Package 5

Gallery



Downloads

Zeus 3D (zip) - <http://www.midj.com/images/uploads/resources/ZEUS.zip>