



# Nuvola SA

design Midj R&D

Chair with four legs completely upholstered with hide, regenerated hide, leather, ecoleather, fabric or custom's fabric. Available with white or graphite lacquered legs and for the leather, ecoleather and fabric version possibility to upholster the back face with a different fabric.



## Finishing and Materials

### Structure



White Steel



Grafite Steel

### Coating



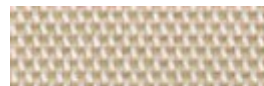
**Mirage Fabric**  
16 colors



**Long Life Fabric**  
13 colors



**Natural Wool Fabric**  
15 colors



**Pix Fabric**



**Bubble fabric**  
14 colors



**Hot Fabric**  
13 colors



**Inca Ecoleather**  
17 colors



**Magic Ecoleather**  
17 colors



**Vintage Ecoleather**  
4 colors



**Special Leather**  
8 colors



**Fiore Leather**  
15 colors



**Vintage Leather**  
4 colors



**Rigenerated Hide**  
10 colors



**Hide**  
19 colors

## Dimensions



Dimension	cm	inch
A	96	37.8

Dimension	cm	inch
B	44	17.3
C	55	21.7
D	47	18.5

---

## Volumetric Details

**Weight** 15.5

**Volume** 0.26 mc

**Package** 1

**Stackable** 4 pieces

---

## Downloads

**Nuvola brochure (pdf)** - <http://www.midj.com/images/uploads/resources/nuvola.pdf>

---

## Materials Certifications

### Mirage Fabric

UNI EN ISO 12947, ISO 12945-2, UNI EN ISO 13934, UNI EN ISO E05-E06, EN ISO 105X12, UNI EN ISO 105 E04, EN ISO 105 B02, UNI EN ISO 105 D01, UNI EN 20105-C01, UNI 8423.

### Natural Wool Fabric

CATAS N. 86473/1 25/10/07; CATAS N. 85687/1 28/09/07; BS 5852-1/79; BS 5852-1:1979

### Bubble fabric

FIRE RETARDANT FABRIC: BS5852:2006 (p. 11 CRIB 5) EN1021-1 EN1021-2 UNI 9175:2010 - classe 1 im COMPOSITION: 100% PES MARTINDALE 35'000 CYCLES

### Hot Fabric

FIRE RETARDANT FABRIC: BS5852:2006 (p. 11 CRIB 5) EN1021-1 EN1021-2 UNI 9175:2010 - classe 1 im COMPOSITION: 100% PES MARTINDALE 45'000 CICLI / CYCLES

### Inca Ecoleather

UNI 9175:1987

### Magic Ecoleather

BS 5852-1:1979

### Fiore Leather

BS 5852 parte 1; ISO 5402>50000 cicli; ISO 105B02 ? 5; ISO 3377-1 ?20 N; ISO 11644 ? 2.5 N/Cm; EN 1021/1-2; EN ISO 17233 -20°; IMO RES A 6528(16)

### Vintage Leather

UNI EN ISO 105 B02 ?3; ISO 5402>50000 cicli; ISO 3377-1?20; UNI EN ISO 11640 Secco - Dry 50 c ?4 Umido - Wet 20 c ? 3; Sudore - Sweat 20 c ? 3