

---

---

CONTRACT 2017

**Paqged**



CONTRACT 2017

ALDO

→ p. 116



# BENKO

→ p. 116



# BENKO

→ p. 116



# DUB

→ p. 117





EVO

→ p. 118



EVO

→ p. 118





# HIP

→ p. 119



# HIP

→ p. 119





# FUM

→ p. 118



K2

→ p. 120



K2

→ p. 120



K2

→ p. 120



K3

→ p. 122



# LINK

→ p. 122





LOF

→ p. 123-124



# LOREM

→ p. 124



# LUBI

→ p. 125



SEN

→ p. 125



# TOLO

→ p. 125-126



UXI

→ p. 126



UXI

→ p. 126-127







ZAP

→ p. 127



9231

→ p. 142



# ANTILLA

→ p. 136



# PROP

→ p. 139-141



# PROP

→ p. 140



# VENTURA

→ p. 158



# ELIZABETH

→ p. 162



0042

→ p. 160





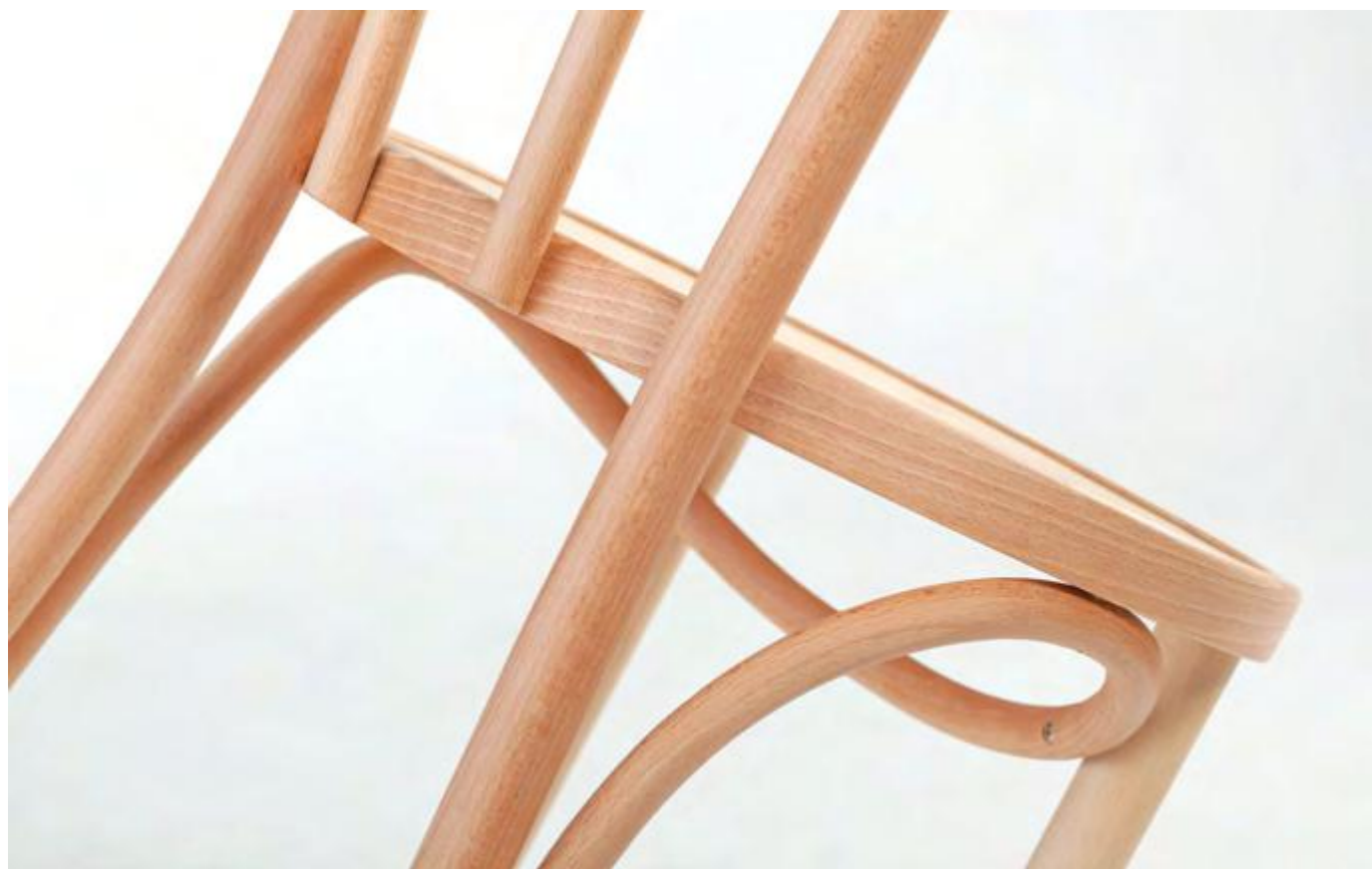
9705

→ p. 144



1840

→ p. 130



PROP

→ p. 141

---

# projects



Concordia Taste, Poznan, Poland



Aqua Cafe, Wrocław, Poland (fot. Natalia Kowalik)

LOF  
→ p. 124



LUBI, TOLO  
→ p. 125



Toscana Bistro, Warsaw, Poland

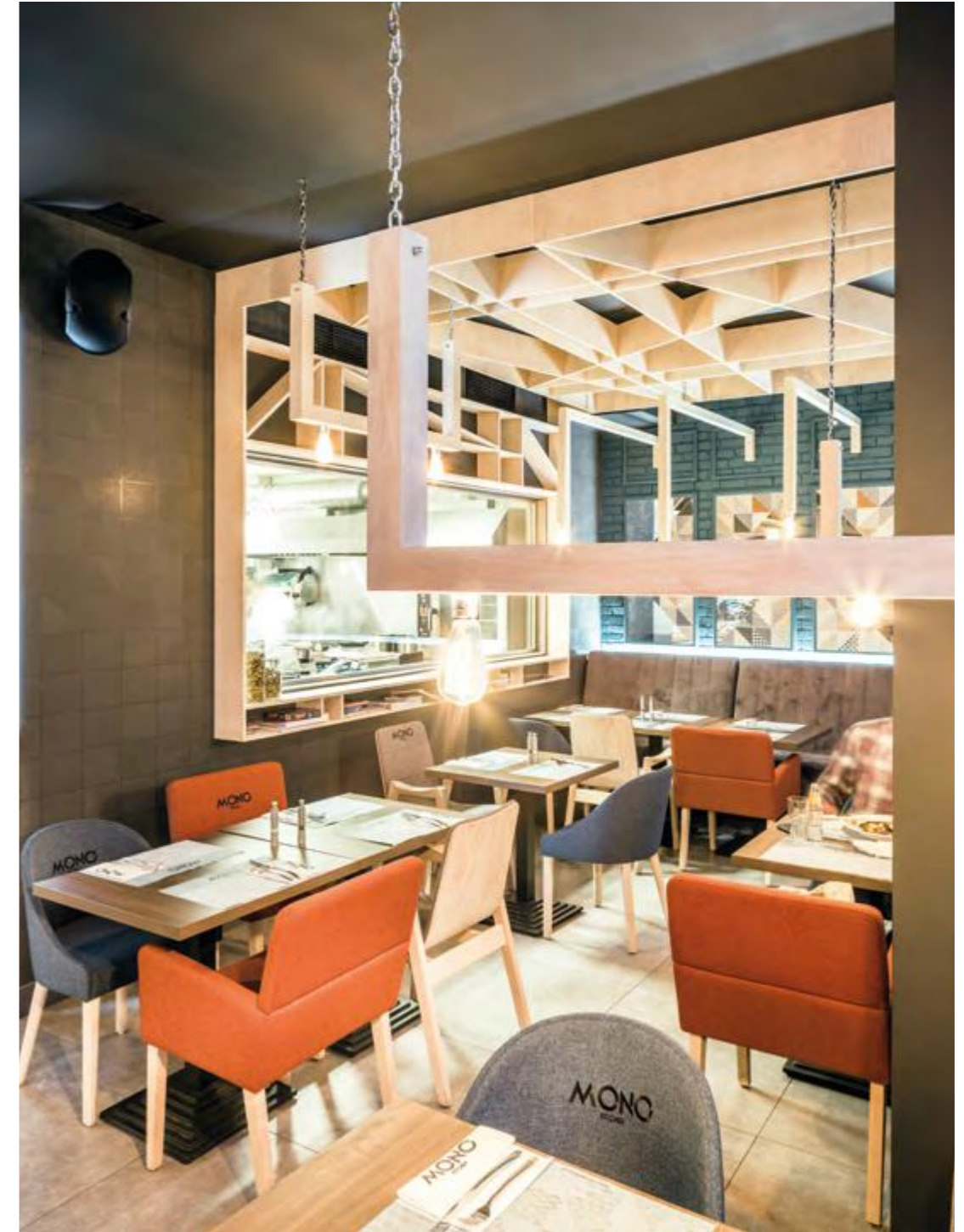
LUBI  
→ p. 125







Mono Kitchen, Gdansk, Poland





Mono Kitchen, Gdansk, Poland

ZAP  
→ p. 127

DUB  
→ p. 117

K2  
→ p. 120



Rosiewicz Optyka, Bielsko-Biała, Poland (fot. Tom Kurek)

EVO  
→ p. 118



Rosiewicz Optyka, Bielsko-Biała, Poland (fot. Tom Kurek)

EVO  
→ p. 118



Bar a Boo, Poznań, Poland

A-0043  
→ p. 160



B-2030  
→ p. 159



Nolita, Warsaw, Poland

A-2030  
→ p. 159



Hotel Herods Dead Sea by Classigan, Ein Bokek, Israel

B-5001  
→ p. 164



Magnolia, Zagreb, Croatia

B-5001  
→ p. 164



Hamptons City Beach, Perth, Australia

ANTILLA  
→ p. 136





Hamptons City Beach, Perth, Australia

ANTILLA  
→ p. 136



Botanical Cafe, Sydney, Australia

A-1840  
→ p. 130



Di Cafe Deli, Wrocław, Poland  
design: BUCK.STUDIO, fot.: Marcin Pawłowski

A-4100  
→ p. 137



Główna Osobowa, Gdynia, Poland  
design: PB/STUDIO & Filip Kozarski, fot. tomirriphotography.com

A-4100  
→ p. 137



Sofra, Warsaw, Poland

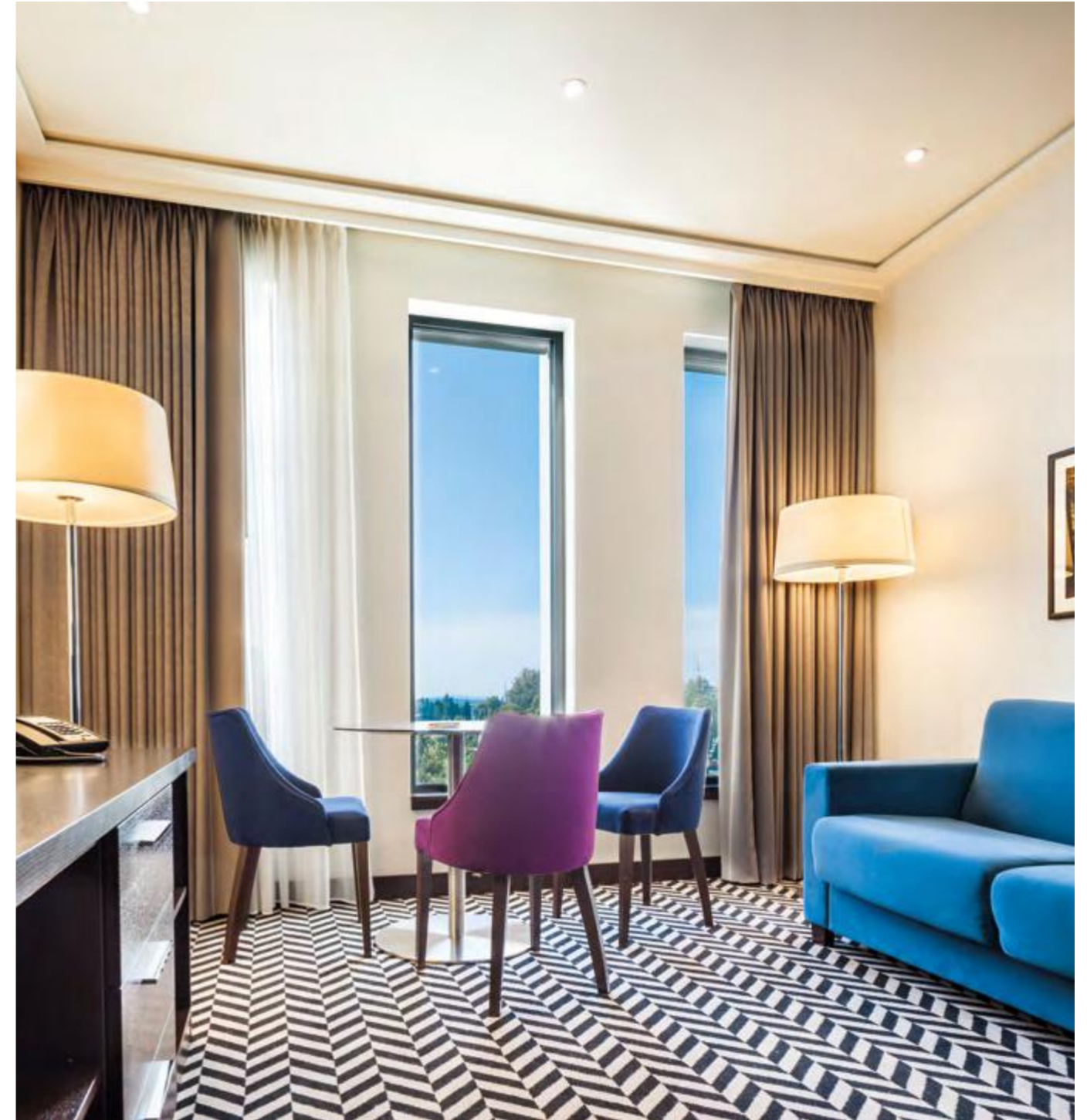
A-1840  
→ p. 130



A-1230  
→ p. 135



Hilton Garden Inn Krakow Airport, Kraków-Balice, Poland



B-5000  
→ p. 164



Hilton Garden Inn Krakow Airport, Kraków-Balice, Poland

A-9490  
→ p. 143



B-5000  
→ p. 164



Grand Nosalowy Dwór Hotel, Zakopane, Poland



K3  
→ p. 122



Kieliszki na Próżnej, Warsaw, Poland

PROP  
→ p. 139-141



Drukarnia Skład Wina & Chleba, Poznan, Poland

A-1230  
→ p. 135

A-0039  
→ p. 150



Drukarnia Skład Wina & Chleba, Poznan, Poland

H-5172  
→ p. 133





Arlamów Hotel, Ustrzyki Dolne, Poland

C-3141  
→ p. 165



Brant Hotel, Wiązowna, Poland

A-0048  
→ p. 161



Grand Lubicz Hotel, Ustka, Poland

K3  
→ p. 122

---

premium



### ALDO A-1070

Design Jadwiga Husarska-Sobina,  
Magdalena Paleczna

**beech**  
H 830 W 490 D 540 SH 460

<b>SEAT</b> veneer	<b>NETTO WEIGHT</b> 4,3 kg
<b>STACKING</b> 3 pcs	<b>BOX VOLUME</b> 0,34
	<b>PCS PER BOX</b> 2 pcs
	<b>PCS PER CONTAINER</b> 288 pcs



### ALDO H-1070

Design Jadwiga Husarska-Sobina,  
Magdalena Paleczna

**beech**  
H 1060 W 480 D 510 SH 780

<b>SEAT</b> veneer	<b>NETTO WEIGHT</b> 5,3 kg
	<b>BOX VOLUME</b> 0,32
	<b>PCS PER BOX</b> 1 pcs
	<b>PCS PER CONTAINER</b> 160 pcs



### BENKO A-8120

Design Tomek Rygalik / Studio Rygalik

**beech**  
H 805 W 445 D 540 SH 460

<b>SEAT</b> veneer upholstered caned	<b>NETTO WEIGHT</b> 3 kg
	<b>BOX VOLUME</b> 0,28
	<b>PCS PER BOX</b> 2 pcs
	<b>PCS PER CONTAINER</b> 372 pcs



### BENKO B-8120

Design Tomek Rygalik / Studio Rygalik

**beech**  
H 805 W 615 D 530 SH 460 AH 660

<b>SEAT</b> veneer upholstered caned	<b>NETTO WEIGHT</b> 6 kg
	<b>BOX VOLUME</b> 0,33
	<b>PCS PER BOX</b> 1 pcs
	<b>PCS PER CONTAINER</b> 140 pcs



### A-DUB

Design Tomek Rygalik / Studio Rygalik

**oak**  
H 900 W 450 D 600 SH 470

<b>SEAT</b> upholstered	<b>NETTO WEIGHT</b> 8 kg
	<b>BOX VOLUME</b> 0,36
	<b>PCS PER BOX</b> 2 pcs
	<b>PCS PER CONTAINER</b> 160 pcs



### B-DUB

Design Tomek Rygalik / Studio Rygalik

**oak**  
H 900 W 620 D 620 SH 470 AH 645

<b>SEAT</b> upholstered	<b>NETTO WEIGHT</b> 10 kg
	<b>BOX VOLUME</b> 0,38
	<b>PCS PER BOX</b> 1 pcs
	<b>PCS PER CONTAINER</b> 150 pcs



### M-DUB

Design Tomek Rygalik / Studio Rygalik

**oak**  
H 780 W 620 D 620 SH 420 AH 560

<b>SEAT</b> upholstered	<b>NETTO WEIGHT</b> 10 kg
	<b>BOX VOLUME</b> 0,33
	<b>PCS PER BOX</b> 1 pcs
	<b>PCS PER CONTAINER</b> 170 pcs



### COFFEE TABLE-DUB

Design Tomek Rygalik / Studio Rygalik

**oak**  
H 380 W 600 D 600

<b>NETTO WEIGHT</b> 9 kg
<b>BOX VOLUME</b> 0,16
<b>PCS PER CONTAINER</b> 360 pcs



### EVO B-2940

Design Agnieszka Pikus

beech / oak  
H 775 W 580 D 540 SH 460 AH 640

SEAT	NETTO WEIGHT
veneer	4 kg
	BOX VOLUME
	0,33
	PCS PER BOX
	1 pcs
	PCS PER CONTAINER
	140 pcs



### EVO H-2940

Design Agnieszka Pikus

beech / oak  
H 950 W 570 D 560 SH 760 AH 820

SEAT	NETTO WEIGHT
veneer	5,7 kg
	BOX VOLUME
	0,41
	PCS PER BOX
	1 pcs
	PCS PER CONTAINER
	120 pcs



### B-FUM 1

Design Tomek Rygalik / Studio Rygalik

beech / oak  
H 810 W 715 D 670 SH 465

SEAT	NETTO WEIGHT
upholstered	13 kg
	BOX VOLUME
	0,44
	PCS PER BOX
	1 pcs
	PCS PER CONTAINER
	130 pcs



### B-FUM 2

Design Tomek Rygalik / Studio Rygalik

beech / oak  
H 810 W 715 D 670 SH 465

SEAT	NETTO WEIGHT
upholstered	15 kg
	BOX VOLUME
	0,44
	PCS PER BOX
	1 pcs
	PCS PER CONTAINER
	130 pcs



### M-FUM

Design Tomek Rygalik / Studio Rygalik

beech / oak  
H 690 W 715 D 670 SH 400

SEAT	NETTO WEIGHT
upholstered	13 kg
	BOX VOLUME
	0,37
	PCS PER BOX
	1 pcs
	PCS PER CONTAINER
	150 pcs



### HIP A-3701

Design Nikodem Szpunar

beech / oak  
H 800 W 495 D 507 SH 445

SEAT	NETTO WEIGHT
veneer	6 kg
	BOX VOLUME
	0,31
	PCS PER BOX
	2 pcs
	PCS PER CONTAINER
	370 pcs



### HIP A-3702

Design Nikodem Szpunar

beech / oak  
H 800 W 495 D 507 SH 480

SEAT	NETTO WEIGHT
upholstered	7 kg
	BOX VOLUME
	0,37
	PCS PER BOX
	2 pcs
	PCS PER CONTAINER
	310 pcs



### HIP B-3701

Design Nikodem Szpunar

beech / oak  
H 800 W 580 D 507 SH 445 AH 660

SEAT	NETTO WEIGHT
veneer	7 kg
	BOX VOLUME
	0,26
	PCS PER BOX
	1 pcs
	PCS PER CONTAINER
	220 pcs



### HIP B-3702

Design Nikodem Szpunar

beech / oak  
H 800 W 580 D 507 SH 480 AH 660

SEAT upholstered	NETTO WEIGHT 8 kg
	BOX VOLUME 0,26
	PCS PER BOX 1 pcs
	PCS PER CONTAINER 220 pcs



### K2 A-2220

Design Tomek Rygalik / Studio Rygalik

beech / oak  
H 980 W 440 D 520 SH 510

SEAT upholstered	NETTO WEIGHT 7,4 kg
	BOX VOLUME 0,41
	PCS PER BOX 2 pcs
	PCS PER CONTAINER 288 pcs



### K2 B-2220

Design Tomek Rygalik / Studio Rygalik

beech / oak  
H 730 W 585 D 670 SH 480

SEAT upholstered	NETTO WEIGHT 12 kg
	BOX VOLUME 0,37
	PCS PER BOX 1 pcs
	PCS PER CONTAINER 153 pcs



### K2 C-2225

Design Tomek Rygalik / Studio Rygalik

beech / oak  
H 480 W 620

SEAT upholstered	NETTO WEIGHT 7,8 kg
	BOX VOLUME 0,37
	PCS PER BOX 1 pcs
	PCS PER CONTAINER 153 pcs



### K2 C-2220

Design Tomek Rygalik / Studio Rygalik

beech / oak  
H 480 W 670

SEAT upholstered	NETTO WEIGHT 7,8 kg
	BOX VOLUME 0,37
	PCS PER BOX 1 pcs
	PCS PER CONTAINER 153 pcs



### K2 H-2220

Design Tomek Rygalik / Studio Rygalik

beech / oak  
H 835 W 440 D 465 SH 750

SEAT upholstered	NETTO WEIGHT 7 kg
	BOX VOLUME 0,28
	PCS PER BOX 1 pcs
	PCS PER CONTAINER 186 pcs



### K2 S-2220

Design Tomek Rygalik / Studio Rygalik

beech / oak  
H 740 W 750 L 750

	NETTO WEIGHT 14 kg
	BOX VOLUME 0,24
	PCS PER CONTAINER 240



### K2 S-2221

Design Tomek Rygalik / Studio Rygalik

beech / oak  
H 350 W 750

	NETTO WEIGHT 10 kg
	BOX VOLUME 0,24
	PCS PER CONTAINER 240



### K3 A-5035

Design Tomek Rygalik / Studio Rygalik

**beech / oak**  
H 850 W 480 D 535 SH 480

<b>SEAT</b> upholstered	<b>NETTO WEIGHT</b> 6,5 kg
	<b>BOX VOLUME</b> 0,34
	<b>PCS PER BOX</b> 2 pcs
	<b>PCS PER CONTAINER</b> 288 pcs



### LINK A-2120

Design Jan Lewczuk

**beech**  
H 835 W 500 D 540 SH 460

<b>SEAT</b> veneer upholstered	<b>NETTO WEIGHT</b> 7 kg
	<b>BOX VOLUME</b> 0,34
	<b>PCS PER BOX</b> 2 pcs
	<b>PCS PER CONTAINER</b> 340 pcs



### LINK A-2120

Design Jan Lewczuk

**beech**  
H 835 W 500 D 540 SH 480

<b>SEAT</b> veneer upholstered	<b>NETTO WEIGHT</b> 7 kg
	<b>BOX VOLUME</b> 0,34
	<b>PCS PER BOX</b> 2 pcs
	<b>PCS PER CONTAINER</b> 340 pcs



### LINK B-2120

Design Jan Lewczuk

**beech**  
H 835 W 500 D 540 SH 460 AH 660

<b>SEAT</b> veneer upholstered	<b>NETTO WEIGHT</b> 7 kg
	<b>BOX VOLUME</b> 0,25
	<b>PCS PER BOX</b> 1 pcs
	<b>PCS PER CONTAINER</b> 230 pcs



### LOF A-4281

Design Tomek Rygalik / Studio Rygalik

**beech / oak**  
H 820 W 440 D 545 SH 460

<b>SEAT</b> veneer upholstered	<b>NETTO WEIGHT</b> 6 kg
	<b>BOX VOLUME</b> 0,34
	<b>PCS PER BOX</b> 2 pcs
	<b>PCS PER CONTAINER</b> 288 pcs



### LOF A-4282

Design Tomek Rygalik / Studio Rygalik

**beech / oak**  
H 820 W 440 D 545 SH 480

<b>SEAT</b> upholstered	<b>NETTO WEIGHT</b> 6,5 kg
	<b>BOX VOLUME</b> 0,34
	<b>PCS PER BOX</b> 2 pcs
	<b>PCS PER CONTAINER</b> 288 pcs



### LOF A-4230

Design Tomek Rygalik / Studio Rygalik

**beech / oak**  
H 820 W 465 D 545 SH 480

<b>SEAT</b> veneer upholstered	<b>NETTO WEIGHT</b> 6 kg
	<b>BOX VOLUME</b> 0,37
	<b>PCS PER BOX</b> 2 pcs
	<b>PCS PER CONTAINER</b> 288 pcs



### LOF A-4239

Design Tomek Rygalik / Studio Rygalik

**beech / oak**  
H 820 W 465 D 545 SH 460

<b>SEAT</b> veneer	<b>NETTO WEIGHT</b> 6,5 kg
	<b>BOX VOLUME</b> 0,34
	<b>PCS PER BOX</b> 2 pcs
	<b>PCS PER CONTAINER</b> 288 pcs



### LOF A-4232

Design Tomek Rygalik / Studio Rygalik

beech / oak

H 820 W 490 D 545 SH 460

SEAT  
veneer  
upholstered

NETTO WEIGHT

6 kg

BOX VOLUME

0,34

PCS PER BOX

2 pcs

PCS PER CONTAINER

288 pcs



### LUBI A-5005

Design Tomek Rygalik / Studio Rygalik

beech / oak

H 805 W 560 D 540 SH 480

SEAT  
upholstered

NETTO WEIGHT

4,5 kg

BOX VOLUME

0,33

PCS PER BOX

1 pcs

PCS PER CONTAINER

140 pcs



### LUBI H-5005

Design Tomek Rygalik / Studio Rygalik

beech / oak

H 885 W 480 D 460 SH 760

SEAT  
upholstered

NETTO WEIGHT

6,8 kg

BOX VOLUME

0,34

PCS PER BOX

1 pcs

PCS PER CONTAINER

144 pcs



### LOF S-4230

Design Tomek Rygalik / Studio Rygalik

beech / oak

H 750 W 800 D 800

NETTO WEIGHT

17 kg

BOX VOLUME

0,09

PCS PER CONTAINER

580 pcs



### LOREM

Design Nikodem Szpunar

beech / oak

H 850 W 460 D 513 SH 465

SEAT  
upholstered

NETTO WEIGHT

5 kg

BOX VOLUME

0,30

PCS PER BOX

2 pcs

PCS PER CONTAINER

380 pcs



### SEN A-3210

Design Tomek Rygalik / Studio Rygalik

beech / oak

H 830 W 700 D 610 SH 450 AH 630

SEAT  
upholstered

NETTO WEIGHT

12 kg

BOX VOLUME

0,39

PCS PER BOX

1 pcs

PCS PER CONTAINER

140 pcs



### LOREM

Design Nikodem Szpunar

beech / oak

H 760 W 850 L 1250/1850

NETTO WEIGHT

44 kg

BOX VOLUME

0,19

PCS PER CONTAINER

300 pcs



### TOLO A-2160

Design Tomek Rygalik / Studio Rygalik

beech / oak

H 815 W 550 D 490 SH 460

SEAT  
veneer  
STACKING  
3 pcs

NETTO WEIGHT

4,8 kg

BOX VOLUME

0,40

PCS PER BOX

2 pcs

PCS PER CONTAINER

244 pcs





### TOLO A-2160 (uph)

Design Tomek Rygalik / Studio Rygalik

**beech / oak**  
H 795 W 550 D 490 SH 480

<b>SEAT</b> upholstered	<b>NETTO WEIGHT</b> 5,3 kg
<b>STACKING</b> 3 pcs	<b>BOX VOLUME</b> 0,40
	<b>PCS PER BOX</b> 2 pcs
	<b>PCS PER CONTAINER</b> 244 pcs



### TOLO H-2160

Design Tomek Rygalik / Studio Rygalik

**beech / oak**  
H 1060 W 570 D 455 SH 790

<b>SEAT</b> veneer upholstered	<b>NETTO WEIGHT</b> 6,5 kg
	<b>BOX VOLUME</b> 0,41
	<b>PCS PER BOX</b> 1 pcs
	<b>PCS PER CONTAINER</b> 120 pcs



### UXI A-2920

Design Tomek Rygalik / Studio Rygalik

**beech**  
H 770 W 450 D 510 SH 480

<b>SEAT</b> upholstered	<b>NETTO WEIGHT</b> 5,5 kg
<b>STACKING</b> 3 pcs	<b>BOX VOLUME</b> 0,34
	<b>PCS PER BOX</b> 2 pcs
	<b>PCS PER CONTAINER</b> 288 pcs



### UXI B-2920

Design Tomek Rygalik / Studio Rygalik

**beech**  
H 770 W 530 D 530 SH 480 AH 715

<b>SEAT</b> upholstered	<b>NETTO WEIGHT</b> 8 kg
<b>STACKING</b> 3 pcs	<b>BOX VOLUME</b> 0,25
	<b>PCS PER BOX</b> 1 pcs
	<b>PCS PER CONTAINER</b> 147 pcs



### UXI H-2920

Design Tomek Rygalik / Studio Rygalik

**beech**  
H 1080 W 530 D 560 SH 790

<b>SEAT</b> upholstered	<b>NETTO WEIGHT</b> 6,8 kg
<b>STACKING</b> 2 pcs	<b>BOX VOLUME</b> 0,41
	<b>PCS PER BOX</b> 1 pcs
	<b>PCS PER CONTAINER</b> 120 pcs



### B-ZAP 1

Design Tomek Rygalik / Studio Rygalik

**beech / oak**  
H 845 W 600 D 560 SH 450 AH 650

<b>SEAT</b> upholstered	<b>NETTO WEIGHT</b> 12 kg
	<b>BOX VOLUME</b> 0,33
	<b>PCS PER BOX</b> 1 pcs
	<b>PCS PER CONTAINER</b> 170 pcs



### B-ZAP 2

Design Tomek Rygalik / Studio Rygalik

**beech / oak**  
H 850 W 600 D 560 SH 450 AH 650

<b>SEAT</b> upholstered	<b>NETTO WEIGHT</b> 12 kg
	<b>BOX VOLUME</b> 0,33
	<b>PCS PER BOX</b> 1 pcs
	<b>PCS PER CONTAINER</b> 170 pcs



### H-ZAP

Design Tomek Rygalik / Studio Rygalik

**beech / oak**  
H 1180 W 600 D 560 SH 780 AH 980

<b>SEAT</b> upholstered	<b>NETTO WEIGHT</b> 15 kg
	<b>BOX VOLUME</b> 0,46
	<b>PCS PER BOX</b> 1 pcs
	<b>PCS PER CONTAINER</b> 120 pcs

---

standard



### A-1840

beech  
H 880 W 420 D 530 SH 460

<b>SEAT</b>	<b>NETTO WEIGHT</b>
veneer	3,1 kg
upholstered	<b>BOX VOLUME</b>
caned	0,31
	<b>PCS PER BOX</b>
	2 pcs
	<b>PCS PER CONTAINER</b>
	372 pcs



### A-8110

beech  
H 805 W 445 D 530 SH 460

<b>SEAT</b>	<b>NETTO WEIGHT</b>
upholstered	3,0 kg
caned	<b>BOX VOLUME</b>
	0,31
	<b>PCS PER BOX</b>
	2 pcs
	<b>PCS PER CONTAINER</b>
	372 pcs



### H-1840

beech  
H 1090 W 440 D 540 SH 780

<b>SEAT</b>	<b>NETTO WEIGHT</b>
veneer	4,7 kg
upholstered	<b>BOX VOLUME</b>
caned	0,35
	<b>PCS PER BOX</b>
	1 pcs
	<b>PCS PER CONTAINER</b>
	160 pcs



### B-8110

beech  
H 805 W 505 D 530 SH 460 AH 700

<b>SEAT</b>	<b>NETTO WEIGHT</b>
upholstered	5,5 kg
caned	<b>BOX VOLUME</b>
	0,36
	<b>PCS PER BOX</b>
	1 pcs
	<b>PCS PER CONTAINER</b>
	140 pcs



### A-1845

beech  
H 880 W 410 D 560 SH 460

<b>SEAT</b>	<b>NETTO WEIGHT</b>
veneer	3,1 kg
upholstered	<b>BOX VOLUME</b>
caned	0,31
<b>STACKING</b>	<b>PCS PER BOX</b>
3 pcs	2 pcs
	<b>PCS PER CONTAINER</b>
	372 pcs



### H-8110

beech  
H 1085 W 410 D 500 SH 750

<b>SEAT</b>	<b>NETTO WEIGHT</b>
upholstered	5 kg
caned	<b>BOX VOLUME</b>
	0,35
	<b>PCS PER BOX</b>
	1 pcs
	<b>PCS PER CONTAINER</b>
	160 pcs



### A-1880

beech  
H 880 W 420 D 530 SH 460

<b>SEAT</b>	<b>NETTO WEIGHT</b>
veneer	3,1 kg
upholstered	<b>BOX VOLUME</b>
caned	0,31
	<b>PCS PER BOX</b>
	2 pcs
	<b>PCS PER CONTAINER</b>
	372 pcs



### A-8291

beech  
H 820 W 445 D 510 SH 460

SEAT	NETTO WEIGHT
veneer	3,7 kg
upholstered	BOX VOLUME
	0,31
	PCS PER BOX
	2 pcs
	PCS PER CONTAINER
	372 pcs



### A-5172

beech  
H 790 W 440 D 490 SH 460

SEAT	NETTO WEIGHT
veneer	3,8 kg
upholstered	BOX VOLUME
	0,31
	PCS PER BOX
	2 pcs
	PCS PER CONTAINER
	372 pcs



### B-8291

beech  
H 820 W 500 D 510 SH 460 AH 680

SEAT	NETTO WEIGHT
veneer	4,2 kg
upholstered	BOX VOLUME
	0,36
	PCS PER BOX
	1 pcs
	PCS PER CONTAINER
	140 pcs



### B-5172

beech  
H 790 W 540 D 485 SH 460 AH 740

SEAT	NETTO WEIGHT
veneer	4,3 kg
upholstered	BOX VOLUME
	0,37
	PCS PER BOX
	2 pcs
	PCS PER CONTAINER
	288 pcs



### B-8292

beech  
H 820 W 500 D 510 SH 460 AH 680

SEAT	NETTO WEIGHT
veneer	4,2 kg
upholstered	BOX VOLUME
	0,36
	PCS PER BOX
	1 pcs
	PCS PER CONTAINER
	140 pcs



### B-5182

beech  
H 790 W 540 D 485 SH 460 AH 740

SEAT	NETTO WEIGHT
veneer	4,7 kg
upholstered	BOX VOLUME
	0,36
	PCS PER BOX
	2 pcs
	PCS PER CONTAINER
	280 pcs



### H-8291

beech  
H 1060 W 460 D 525 SH 750

SEAT	NETTO WEIGHT
veneer	4,8 kg
upholstered	BOX VOLUME
	0,35
	PCS PER BOX
	1 pcs
	PCS PER CONTAINER
	160 pcs



### H-5172

beech  
H 1140 W 540 D 480 SH 800 AH 1090

SEAT	NETTO WEIGHT
veneer	6 kg
upholstered	BOX VOLUME
	0,35
	PCS PER BOX
	1 pcs
	PCS PER CONTAINER
	160 pcs



### A-5170

beech  
H 790 W 440 D 490 SH 460

SEAT veneer upholstered	NETTO WEIGHT 3,8 kg BOX VOLUME 0,31 PCS PER BOX 2 pcs PCS PER CONTAINER 372 pcs
-------------------------------	--



### A-1230

beech  
H 870 W 460 D 500 SH 460

SEAT veneer upholstered	NETTO WEIGHT 3,6 kg BOX VOLUME 0,36 PCS PER BOX 2 pcs PCS PER CONTAINER 330 pcs
-------------------------------	--



### H-5170

beech  
H 1065 W 440 D 475 SH 770 AH 1090

SEAT veneer upholstered	NETTO WEIGHT 5,5 kg BOX VOLUME 0,35 PCS PER BOX 1 pcs PCS PER CONTAINER 160 pcs
-------------------------------	--



### H-1230

beech  
H 1085 W 460 D 540 SH 770

SEAT veneer upholstered	NETTO WEIGHT 5,5 kg BOX VOLUME 0,35 PCS PER BOX 1 pcs PCS PER CONTAINER 160 pcs
-------------------------------	--



### A-6421

beech  
H 810 W 415 D 485 SH 450

SEAT veneer upholstered	NETTO WEIGHT 3,5 kg BOX VOLUME 0,31 PCS PER BOX 2 pcs PCS PER CONTAINER 372 pcs
-------------------------------	--



### MOON A-1260

beech  
H 870 W 460 D 500 SH 460

SEAT veneer upholstered	NETTO WEIGHT 3,6 kg BOX VOLUME 0,36 PCS PER BOX 2 pcs PCS PER CONTAINER 330 pcs
-------------------------------	--



### A-9003

beech  
H 810 W 510 D 545 SH 460

SEAT upholstered caned STACKING 3 pcs	NETTO WEIGHT 3,9 kg BOX VOLUME 0,31 PCS PER BOX 2 pcs PCS PER CONTAINER 372 pcs
---	--



### MOON H-1260

beech  
H 1085 W 460 D 540 SH 770

SEAT veneer upholstered	NETTO WEIGHT 5,5 kg BOX VOLUME 0,35 PCS PER BOX 1 pcs PCS PER CONTAINER 160 pcs
-------------------------------	--



### ANTILLA A-9850

Design Paged Design Team

**beech**  
H 835 W 480 D 515 SH 450

<b>SEAT</b>	<b>NETTO WEIGHT</b>
veneer	4,5 kg
upholstered	<b>BOX VOLUME</b>
	0,37
	<b>PCS PER BOX</b>
	2 pcs
	<b>PCS PER CONTAINER</b>
	288 pcs



### ANTILLA A-9880

Design Paged Design Team

**beech**  
H 970 W 420 D 550 SH 450

<b>SEAT</b>	<b>NETTO WEIGHT</b>
veneer	4,5 kg
upholstered	<b>BOX VOLUME</b>
	0,42
	<b>PCS PER BOX</b>
	2 pcs
	<b>PCS PER CONTAINER</b>
	286 pcs



### ANTILLA B-9850

Design Paged Design Team

**beech**  
H 835 W 570 D 515 SH 450 AH 670

<b>SEAT</b>	<b>NETTO WEIGHT</b>
veneer	5 kg
upholstered	<b>BOX VOLUME</b>
	0,36
	<b>PCS PER BOX</b>
	1 pcs
	<b>PCS PER CONTAINER</b>
	140 pcs



### YESTERDAY A-4100

Design Paged Design Team

**beech**  
H 780 W 450 D 495 SH 475

<b>SEAT</b>	<b>NETTO WEIGHT</b>
veneer	4,2 kg
upholstered	<b>BOX VOLUME</b>
	0,36
	<b>PCS PER BOX</b>
	2 pcs
	<b>PCS PER CONTAINER</b>
	330 pcs



### ANTILLA C-9850

Design Paged Design Team

**beech**  
H 780 W 460 D 350

<b>SEAT</b>	<b>NETTO WEIGHT</b>
veneer	4,3 kg
	<b>BOX VOLUME</b>
	0,18
	<b>PCS PER BOX</b>
	1 pcs
	<b>PCS PER CONTAINER</b>
	310 pcs



### YESTERDAY B-4100

Design Paged Design Team

**beech**  
H 790 W 550 D 495 SH 475 AH 680

<b>SEAT</b>	<b>NETTO WEIGHT</b>
veneer	6 kg
upholstered	<b>BOX VOLUME</b>
	0,33
	<b>PCS PER BOX</b>
	1 pcs
	<b>PCS PER CONTAINER</b>
	140 pcs



### ANTILLA H-9850

Design Paged Design Team

**beech**  
H 1105 W 530 D 570 SH 780

<b>SEAT</b>	<b>NETTO WEIGHT</b>
veneer	5 kg
upholstered	<b>BOX VOLUME</b>
	0,35
	<b>PCS PER BOX</b>
	1 pcs
	<b>PCS PER CONTAINER</b>
	160 pcs



### XCHAIR 4 A-2094

Design Jadwiga Husarska-Sobina

**beech**  
H 870 W 440 D 530 SH 460

<b>SEAT</b>	<b>NETTO WEIGHT</b>
veneer	4,9 kg
	<b>BOX VOLUME</b>
	0,31
	<b>PCS PER BOX</b>
	2 pcs
	<b>PCS PER CONTAINER</b>
	372 pcs



### XCHAIR 4 A-2094

Design Jadwiga Husarska-Sobina

**beech**  
H 880 W 440 D 530 SH 470

<b>SEAT</b>	<b>NETTO WEIGHT</b>
upholstered	4,9 kg
	<b>BOX VOLUME</b>
	0,31
	<b>PCS PER BOX</b>
	2 pcs
	<b>PCS PER CONTAINER</b>
	372 pcs



### XSTOOL H-2090

Design Jadwiga Husarska-Sobina

**beech**  
H 905 W 465 D 520 SH 750

<b>SEAT</b>	<b>NETTO WEIGHT</b>
veneer	3,8 kg
	<b>BOX VOLUME</b>
	0,31
	<b>PCS PER BOX</b>
	1 pcs
	<b>PCS PER CONTAINER</b>
	160 pcs



### A-4351

Design Kinga Chmielarz

**beech**  
H 790 W 455 D 510 SH 470

<b>SEAT</b>	<b>NETTO WEIGHT</b>
veneer upholstered	4,9 kg
	<b>BOX VOLUME</b>
	0,31
	<b>PCS PER BOX</b>
	2 pcs
	<b>PCS PER CONTAINER</b>
	372 pcs



### UVU A A-4350

Design Kinga Chmielarz

**beech**  
H 780 W 460 D 510 SH 470

<b>SEAT</b>	<b>NETTO WEIGHT</b>
veneer upholstered	4,9 kg
	<b>BOX VOLUME</b>
	0,31
	<b>PCS PER BOX</b>
	2 pcs
	<b>PCS PER CONTAINER</b>
	372 pcs



### UVU H H-4350

Design Kinga Chmielarz

**beech**  
H 1035 W 470 D 520 SH 800

<b>SEAT</b>	<b>NETTO WEIGHT</b>
veneer upholstered	6,4 kg
	<b>BOX VOLUME</b>
	0,35
	<b>PCS PER BOX</b>
	1 pcs
	<b>PCS PER CONTAINER</b>
	160 pcs



### PROP A-4390

Design Nikodem Szpunar

**beech / oak**  
H 825 W 445 D 570 SH 465

<b>SEAT</b>	<b>NETTO WEIGHT</b>
veneer upholstered	5,2 kg
	<b>BOX VOLUME</b>
	0,37
	<b>PCS PER BOX</b>
	2 pcs
	<b>PCS PER CONTAINER</b>
	372 pcs



### PROP A-4395

Design Nikodem Szpunar

**beech / oak**  
H 825 W 445 D 570 SH 500

<b>SEAT</b>	<b>NETTO WEIGHT</b>
upholstered	6 kg
	<b>BOX VOLUME</b>
	0,37
	<b>PCS PER BOX</b>
	2 pcs
	<b>PCS PER CONTAINER</b>
	372 pcs



### PROP B-4390

Design Nikodem Szpunar

beech / oak  
H 825 W 600 D 585 SH 465 AH 670

SEAT	NETTO WEIGHT
veneer	6,8 kg
upholstered	BOX VOLUME
	0,36
	PCS PER BOX
	1 pcs
	PCS PER CONTAINER
	140 pcs



### PROP B-4395

Design Nikodem Szpunar

beech / oak  
H 825 W 600 D 585 SH 500 AH 670

SEAT	NETTO WEIGHT
upholstered	7,9 kg
	BOX VOLUME
	0,36
	PCS PER BOX
	1 pcs
	PCS PER CONTAINER
	140 pcs



### PROP B-4398

Design Nikodem Szpunar

beech / oak  
H 825 W 600 D 585 SH 500 AH 695

SEAT	NETTO WEIGHT
upholstered	7,9 kg
	BOX VOLUME
	0,36
	PCS PER BOX
	1 pcs
	PCS PER CONTAINER
	140 pcs



### PROP C-4390

Design Nikodem Szpunar

beech / oak  
H 780 W 505 D 460 SH 780

SEAT	NETTO WEIGHT
veneer	5,7 kg
	BOX VOLUME
	0,35
	PCS PER BOX
	1 pcs
	PCS PER CONTAINER
	360 pcs



### PROP H-4390

Design Nikodem Szpunar

beech / oak  
H 1020 W 515 D 495 SH 785

SEAT	NETTO WEIGHT
veneer	6,8 kg
upholstered	BOX VOLUME
	0,35
	PCS PER BOX
	1 pcs
	PCS PER CONTAINER
	160 pcs



### PROP 80x80

Design Nikodem Szpunar

beech / oak  
H 750 W 800 D 800

NETTO WEIGHT
18 kg
BOX VOLUME
0,08
PCS PER CONTAINER
725 pcs



### PROP fi 80

Design Nikodem Szpunar

beech / oak  
H 750 W 800 D 800

NETTO WEIGHT
15 kg
BOX VOLUME
0,08
PCS PER CONTAINER
725 pcs



### PROP fi 60

Design Nikodem Szpunar

beech / oak  
H 500 W 600 D 600

NETTO WEIGHT
9 kg
BOX VOLUME
0,05
PCS PER CONTAINER
1160 pcs





### A-9231

beech  
H 840 W 460 D 535 SH 475

SEAT	NETTO WEIGHT
veneer	4,5 kg
upholstered	BOX VOLUME
STACKING	0,37
3 pcs	PCS PER BOX
	2 pcs
	PCS PER CONTAINER
	288 pcs



### B-9448

beech / oak  
H 840 W 535 D 535 SH 495 AH 705

SEAT	NETTO WEIGHT
veneer	5,3 kg
upholstered	BOX VOLUME
STACKING	0,36
3 pcs	PCS PER BOX
	1 pcs
	PCS PER CONTAINER
	140 pcs



### B-9231

beech / oak  
H 840 W 535 D 535 SH 475 AH 705

SEAT	NETTO WEIGHT
veneer	4,9 kg
upholstered	BOX VOLUME
STACKING	0,36
3 pcs	PCS PER BOX
	1 pcs
	PCS PER CONTAINER
	140 pcs



### A-9490

beech  
H 840 W 460 D 535 SH 475

SEAT	NETTO WEIGHT
upholstered	5,1 kg
STACKING	BOX VOLUME
3 pcs	0,37
	PCS PER BOX
	2 pcs
	PCS PER CONTAINER
	288 pcs



### H-9230

beech  
H 1050 W 430 D 510 SH 785

SEAT	NETTO WEIGHT
veneer	7,2 kg
upholstered	BOX VOLUME
	0,35
	PCS PER BOX
	1 pcs
	PCS PER CONTAINER
	160 pcs



### B-9490

beech  
H 840 W 535 D 535 SH 495 AH 705

SEAT	NETTO WEIGHT
upholstered	5,5 kg
STACKING	BOX VOLUME
3 pcs	0,36
	PCS PER BOX
	1 pcs
	PCS PER CONTAINER
	140 pcs



### A-9448

beech  
H 840 W 460 D 535 SH 495

SEAT	NETTO WEIGHT
upholstered	5,4 kg
STACKING	BOX VOLUME
3 pcs	0,38
	PCS PER BOX
	2 pcs
	PCS PER CONTAINER
	288 pcs



### DOMO A-9605

Design Paged Design Team

beech / oak  
H 805 W 440 D 485 SH 450

SEAT	NETTO WEIGHT
veneer	4 kg
upholstered	BOX VOLUME
STACKING	0,31
4 pcs	PCS PER BOX
	2 pcs
	PCS PER CONTAINER
	372 pcs



### A-9705

beech / oak  
H 840 W 460 D 550 SH 475

SEAT	NETTO WEIGHT
veneer	4,5 kg
STACKING	BOX VOLUME
3 pcs	0,37
	PCS PER BOX
	2 pcs
	PCS PER CONTAINER
	288 pcs



### A-6620

beech  
H 820 W 425 D 510 SH 460

SEAT	NETTO WEIGHT
veneer	4,3 kg
upholstered	BOX VOLUME
	0,31
	PCS PER BOX
	2 pcs
	PCS PER CONTAINER
	288 pcs



### B-9705

beech / oak  
H 840 W 535 D 535 SH 475 AH 705

SEAT	NETTO WEIGHT
veneer	5 kg
upholstered	BOX VOLUME
STACKING	0,36
3 pcs	PCS PER BOX
	1 pcs
	PCS PER CONTAINER
	140 pcs



### B-6620

beech  
H 860 W 580 D 580 SH 460 AH 710

SEAT	NETTO WEIGHT
veneer	5 kg
upholstered	BOX VOLUME
	0,32
	PCS PER BOX
	1 pcs
	PCS PER CONTAINER
	150 pcs



### H-9705

beech  
H 1050 W 430 D 510 SH 785

SEAT	NETTO WEIGHT
veneer	7,2 kg
upholstered	BOX VOLUME
	0,35
	PCS PER BOX
	1 pcs
	PCS PER CONTAINER
	160 pcs



### AMETYST A-2000

Design Małgorzata Pękala

beech  
H 835 W 425 D 520 SH 460

SEAT	NETTO WEIGHT
veneer	4,6 kg
upholstered	BOX VOLUME
	0,31
	PCS PER BOX
	2 pcs
	PCS PER CONTAINER
	372 pcs



### A-5550

beech  
H 860 W 450 D 530 SH 450

SEAT	NETTO WEIGHT
veneer	5,3 kg
upholstered	BOX VOLUME
	0,31
	PCS PER BOX
	2 pcs
	PCS PER CONTAINER
	372 pcs



### AMETYST H-2000

Design Małgorzata Pękala

beech  
H 1065 W 440 D 510 SH 760

SEAT	NETTO WEIGHT
veneer	5,6 kg
upholstered	BOX VOLUME
	0,35
	PCS PER BOX
	1 pcs
	PCS PER CONTAINER
	160 pcs



### A-5200

beech  
H 840 W 430 D 520 SH 460

SEAT	NETTO WEIGHT
veneer	6 kg
upholstered	BOX VOLUME
solid	0,37
	PCS PER BOX
	2 pcs
	PCS PER CONTAINER
	288 pcs



### B-5210

beech  
H 840 W 525 D 520 SH 460 AH 670

SEAT	NETTO WEIGHT
veneer	6,3 kg
upholstered	BOX VOLUME
solid	0,36
	PCS PER BOX
	1 pcs
	PCS PER CONTAINER
	140 pcs



### H-5200

beech  
H 1100 W 460 D 480 SH 760

SEAT	NETTO WEIGHT
veneer	7 kg
upholstereds	BOX VOLUME
solid	0,35
	PCS PER BOX
	1 pcs
	PCS PER CONTAINER
	160 pcs



### H-5210

beech  
H 1100 W 460 D 480 SH 780

SEAT	NETTO WEIGHT
veneer	7 kg
upholstered	BOX VOLUME
solid	0,35
	PCS PER BOX
	1 pcs
	PCS PER CONTAINER
	160 pcs



### B-5200

beech  
H 840 W 525 D 520 SH 460 AH 670

SEAT	NETTO WEIGHT
veneer	6,3 kg
upholstered	BOX VOLUME
solid	0,36
	PCS PER BOX
	1 pcs
	PCS PER CONTAINER
	140 pcs



### A-5245

beech  
H 840 W 430 D 520 SH 480

SEAT	NETTO WEIGHT
veneer	6 kg
upholstered	BOX VOLUME
solid	0,42
STACKING	PCS PER BOX
3 pcs	2 pcs
	PCS PER CONTAINER
	286 pcs



### A-5210

beech  
H 840 W 430 D 520 SH 460

SEAT	NETTO WEIGHT
veneer	6 kg
upholstered	BOX VOLUME
solid	0,37
	PCS PER BOX
	2 pcs
	PCS PER CONTAINER
	288 pcs



### B-5245

beech  
H 840 W 525 D 520 SH 460 AH 670

SEAT	NETTO WEIGHT
veneer	6,5 kg
upholstered	BOX VOLUME
	0,36
	PCS PER BOX
	1 pcs
	PCS PER CONTAINER
	140 pcs



### H-5245

beech  
H 1100 W 460 D 480 SH 790

SEAT	NETTO WEIGHT
veneer	7 kg
upholstered	BOX VOLUME
	0,35
	PCS PER BOX
	1 pcs
	PCS PER CONTAINER
	160 pcs



### A-5406

beech  
H 855 W 490 D 490 SH 480

SEAT	NETTO WEIGHT
upholstered	6 kg
STACKING	BOX VOLUME
3 pcs	0,37
	PCS PER BOX
	2 pcs
	PCS PER CONTAINER
	288 pcs



### B-5406

beech  
H 855 W 530 D 490 SH 480 AH 700

SEAT	NETTO WEIGHT
upholstered	6,5 kg
STACKING	BOX VOLUME
2 pcs	0,36
	PCS PER BOX
	1 pcs
	PCS PER CONTAINER
	140 pcs



### H-5206

beech  
H 1100 W 430 D 520 SH 790

SEAT	NETTO WEIGHT
upholstered	7,5 kg
	BOX VOLUME
	0,35
	PCS PER BOX
	1 pcs
	PCS PER CONTAINER
	160 pcs



### A-5410

beech  
H 855 W 490 D 490 SH 450

SEAT	NETTO WEIGHT
veneer	6 kg
upholstered	BOX VOLUME
	0,37
STACKING	PCS PER BOX
3 pcs	2 pcs
	PCS PER CONTAINER
	288 pcs



### B-5410

beech  
H 855 W 530 D 490 SH 450 AH 700

SEAT	NETTO WEIGHT
veneer	6,5 kg
upholstered	BOX VOLUME
	0,36
STACKING	PCS PER BOX
2 pcs	1 pcs
	PCS PER CONTAINER
	140 pcs



### A-6500

beech  
H 885 W 470 D 520 SH 455

SEAT	NETTO WEIGHT
upholstered	9,5 kg
solid	BOX VOLUME
	0,37
	PCS PER BOX
	2 pcs
	PCS PER CONTAINER
	288 pcs



### A-4721

beech  
H 855 W 420 D 500 SH 460

SEAT veneer upholstered	NETTO WEIGHT 4,2 kg BOX VOLUME 0,31 PCS PER BOX 2 pcs PCS PER CONTAINER 372 pcs
-------------------------------	--



### H-4720

beech  
H 1070 W 430 D 500 SH 770

SEAT veneer upholstered	NETTO WEIGHT 5 kg BOX VOLUME 0,35 PCS PER BOX 1 pcs PCS PER CONTAINER 160 pcs
-------------------------------	--



### A-0039

beech  
H 835 W 405 D 510 SH 450

SEAT veneer upholstered	NETTO WEIGHT 4,2 kg BOX VOLUME 0,31 PCS PER BOX 2 pcs PCS PER CONTAINER 372 pcs
-------------------------------	--



### H-9927

beech  
H 1130 W 490 D 460 SH 750

SEAT veneer upholstered	NETTO WEIGHT 7,5 kg BOX VOLUME 0,35 PCS PER BOX 1 pcs PCS PER CONTAINER 160 pcs
-------------------------------	--



### H-9950

beech  
H 1130 W 480 D 490 SH 790

SEAT upholstered	NETTO WEIGHT 6,6 kg BOX VOLUME 0,35 PCS PER BOX 1 pcs PCS PER CONTAINER 160 pcs
---------------------	--



### A-5250

beech  
H 870 W 440 D 520 SH 480

SEAT upholstered	NETTO WEIGHT 4,9 kg BOX VOLUME 0,37 PCS PER BOX 2 pcs PCS PER CONTAINER 288 pcs
---------------------	--



### A-9201

beech  
H 930 W 450 D 510 SH 500

SEAT upholstered	NETTO WEIGHT 7 kg BOX VOLUME 0,42 PCS PER BOX 2 pcs PCS PER CONTAINER 286 pcs
---------------------	--



### H-9202

beech  
H 1070 W 440 D 510 SH 800

SEAT veneer upholstered	NETTO WEIGHT 7,3 kg BOX VOLUME 0,35 PCS PER BOX 1 pcs PCS PER CONTAINER 160 pcs
-------------------------------	--



### A-4570

beech  
H 840 W 475 D 540 SH 480

SEAT upholstered	NETTO WEIGHT 5 kg
	BOX VOLUME 0,37
	PCS PER BOX 2 pcs
	PCS PER CONTAINER 288 pcs



### B-4578

beech  
H 845 W 560 D 550 SH 480 AH 665

SEAT upholstered	NETTO WEIGHT 8,7 kg
	BOX VOLUME 0,36
	PCS PER BOX 1 pcs
	PCS PER CONTAINER 140 pcs



### B-4570

beech  
H 840 W 560 D 550 SH 480 AH 665

SEAT upholstered	NETTO WEIGHT 7 kg
	BOX VOLUME 0,36
	PCS PER BOX 1 pcs
	PCS PER CONTAINER 140 pcs



### A-0990

beech  
H 920 W 460 D 540 SH 480

SEAT upholstered	NETTO WEIGHT 6 kg
	BOX VOLUME 0,37
	PCS PER BOX 2 pcs
	PCS PER CONTAINER 288 pcs



### H-4570

beech  
H 1120 W 490 D 500 SH 790

SEAT upholstered	NETTO WEIGHT 8 kg
	BOX VOLUME 0,35
	PCS PER BOX 1 pcs
	PCS PER CONTAINER 160 pcs



### B-0990

beech  
H 920 W 530 D 540 SH 480 AH 695

SEAT upholstered	NETTO WEIGHT 7 kg
	BOX VOLUME 0,36
	PCS PER BOX 1 pcs
	PCS PER CONTAINER 140 pcs



### A-4578

beech  
H 845 W 475 D 540 SH 48

SEAT upholstered	NETTO WEIGHT 5,3 kg
	BOX VOLUME 0,37
	PCS PER BOX 2 pcs
	PCS PER CONTAINER 288 pcs



### A-5281

beech  
H 880 W 460 D 520 SH 480

SEAT upholstered	NETTO WEIGHT 4,5 kg
	BOX VOLUME 0,37
	PCS PER BOX 2 pcs
	PCS PER CONTAINER 288 pcs



### B-0027

beech  
H 835 W 520 D 530 SH 450 AH 700

SEAT veneer upholstered	NETTO WEIGHT 5,6 kg
	BOX VOLUME 0,36
	PCS PER BOX 1 pcs
	PCS PER CONTAINER 140 pcs



### B-5281

beech  
H 880 W 520 D 520 SH 480 AH 700

SEAT upholstered	NETTO WEIGHT 6 kg
	BOX VOLUME 0,36
	PCS PER BOX 1 pcs
	PCS PER CONTAINER 140 pcs



### H-0027

beech  
H 1080 W 440 D 545 SH 750

SEAT veneer upholstered	NETTO WEIGHT 5,6 kg
	BOX VOLUME 0,36
	PCS PER BOX 1 pcs
	PCS PER CONTAINER 160 pcs



### H-5281

beech  
H 1120 W 470 D 535 SH 790

SEAT upholstered	NETTO WEIGHT 6,5 kg
	BOX VOLUME 0,35
	PCS PER BOX 1 pcs
	PCS PER CONTAINER 160 pcs



### A-0023

beech  
H 830 W 425 D 540 SH 480

SEAT upholstered	NETTO WEIGHT 5,5 kg
	BOX VOLUME 0,36
	PCS PER BOX 2 pcs
	PCS PER CONTAINER 330 pcs



### A-0027

beech  
H 835 W 425 D 530 SH 450

SEAT veneer upholstered	NETTO WEIGHT 4,5 kg
	BOX VOLUME 0,31
	PCS PER BOX 2 pcs
	PCS PER CONTAINER 372 pcs



### H-0023

beech  
H 1070 W 440 D 550 SH 790

SEAT upholstered	NETTO WEIGHT 6 kg
	BOX VOLUME 0,36
	PCS PER BOX 1 pcs
	PCS PER CONTAINER 160 pcs



### A-0010

beech  
H 830 W 435 D 560 SH 480

SEAT upholstered	NETTO WEIGHT 6 kg
	BOX VOLUME 0,36
	PCS PER BOX 2 pcs
	PCS PER CONTAINER 330 pcs



### B-0911

beech  
H 830 W 520 D 560 SH 480 AH 700

SEAT upholstered	NETTO WEIGHT 8 kg
	BOX VOLUME 0,36
	PCS PER BOX 1 pcs
PIPING on special request	PCS PER CONTAINER 140 pcs



### B-0011

beech  
H 830 W 520 D 560 SH 480 AH 700

SEAT upholstered	NETTO WEIGHT 7,1 kg
	BOX VOLUME 0,36
	PCS PER BOX 1 pcs
	PCS PER CONTAINER 140 pcs



### B-9911

beech  
H 845 W 600 D 565 SH 480 AH 700

SEAT upholstered	NETTO WEIGHT 9 kg
	BOX VOLUME 0,36
	PCS PER BOX 1 pcs
PIPING on special request	PCS PER CONTAINER 140 pcs



### H-0010

beech  
H 1070 W 435 D 560 SH 790

SEAT upholstered	NETTO WEIGHT 6,7 kg
	BOX VOLUME 0,36
	PCS PER BOX 1 pcs
	PCS PER CONTAINER 160 pcs



### H-0910

beech  
H 1070 W 435 D 560 SH 790

SEAT upholstered	NETTO WEIGHT 6,7 kg
	BOX VOLUME 0,35
	PCS PER BOX 1 pcs
PIPING on special request	PCS PER CONTAINER 160 pcs



### A-0910

beech  
H 830 W 435 D 560 SH 480

SEAT upholstered	NETTO WEIGHT 6,3 kg
	BOX VOLUME 0,36
	PCS PER BOX 2 pcs
	PCS PER CONTAINER 330 pcs



### H-0225

beech  
H 1090 W 440 D 560 SH 820

SEAT upholstered	NETTO WEIGHT 7,6 kg
	BOX VOLUME 0,35
	PCS PER BOX 1 pcs
	PCS PER CONTAINER 160 pcs





### VOGUE A-9440

Design Paged Design Team

**beech**  
H 810 W 460 D 540 SH 480

<b>SEAT</b> upholstered	<b>NETTO WEIGHT</b> 6,8 kg
	<b>BOX VOLUME</b> 0,37
	<b>PCS PER BOX</b> 2 pcs
<b>BUTTONS</b> on special request	<b>PCS PER CONTAINER</b> 288 pcs



### SWING A-0760

Design Jadwiga Husarska-Sobina

**beech / oak**  
H 940 W 500 D 560 SH 500

<b>SEAT</b> upholstered	<b>NETTO WEIGHT</b> 6,5 kg
	<b>BOX VOLUME</b> 0,37
	<b>PCS PER BOX</b> 1 pcs
	<b>PCS PER CONTAINER</b> 144 pcs



### VOGUE M-9441

Design Paged Design Team

**beech**  
H 770 W 600 D 630 SH 430

<b>SEAT</b> upholstered	<b>NETTO WEIGHT</b> 7,8 kg
	<b>BOX VOLUME</b> 0,40
	<b>PCS PER BOX</b> 1 pcs
<b>BUTTONS</b> on special request	<b>PCS PER CONTAINER</b> 153 pcs



### MALACHIT A-2030

**beech**  
H 850 W 450 D 560 SH 490

<b>SEAT</b> upholstered	<b>NETTO WEIGHT</b> 6,3 kg
	<b>BOX VOLUME</b> 0,37
	<b>PCS PER BOX</b> 2 pcs
	<b>PCS PER CONTAINER</b> 288 pcs



### VENTURA A-0461

Design Jadwiga Husarska-Sobina

**beech**  
H 785 W 535 D 575 SH 430

<b>SEAT</b> upholstered	<b>NETTO WEIGHT</b> 8,6 kg
	<b>BOX VOLUME</b> 0,36
	<b>PCS PER BOX</b> 1 pcs
	<b>PCS PER CONTAINER</b> 140 pcs



### MALACHIT B-2030

**beech**  
H 850 W 550 D 560 SH 490 AH 690

<b>SEAT</b> upholstered	<b>NETTO WEIGHT</b> 7,5 kg
	<b>BOX VOLUME</b> 0,36
	<b>PCS PER BOX</b> 1 pcs
	<b>PCS PER CONTAINER</b> 140 pcs



### VENTURA B-0461

Design Jadwiga Husarska-Sobina

**beech**  
H 785 W 620 D 585 SH 430 AH 660

<b>SEAT</b> upholstered	<b>NETTO WEIGHT</b> 9,8 kg
	<b>BOX VOLUME</b> 0,37
	<b>PCS PER BOX</b> 1 pcs
	<b>PCS PER CONTAINER</b> 138 pcs



### MALACHIT H-2030

**beech**  
H 1065 W 450 D 540 SH 800

<b>SEAT</b> upholstered	<b>NETTO WEIGHT</b> 7,5 kg
	<b>BOX VOLUME</b> 0,35
	<b>PCS PER BOX</b> 1 pcs
	<b>PCS PER CONTAINER</b> 160 pcs



### A-0042

beech  
H 815 W 460 D 500 SH 480

SEAT upholstered	NETTO WEIGHT 6,4 kg
	BOX VOLUME 0,37
	PCS PER BOX 2 pcs
PIPING on special request	PCS PER CONTAINER 288 pcs



### A-0045

beech  
H 815 W 460 D 500 SH 480

SEAT upholstered	NETTO WEIGHT 6,5 kg
	BOX VOLUME 0,37
	PCS PER BOX 2 pcs
BUTTONS on special request	PCS PER CONTAINER 288 pcs



### H-0042

beech  
H 1115 W 500 D 530 SH 780

SEAT upholstered	NETTO WEIGHT 7,5 kg
	BOX VOLUME 0,35
	PCS PER BOX 1 pcs
PIPING on special request	PCS PER CONTAINER 160 pcs



### H-0045

beech  
H 1115 W 500 D 530 SH 780

SEAT upholstered	NETTO WEIGHT 7,6 kg
	BOX VOLUME 0,35
	PCS PER BOX 1 pcs
BUTTONS on special request	PCS PER CONTAINER 160 pcs



### A-0043

beech  
H 815 W 460 D 500 SH 480

SEAT upholstered	NETTO WEIGHT 6,3 kg
	BOX VOLUME 0,37
	PCS PER BOX 2 pcs
	PCS PER CONTAINER 288 pcs



### A-0046

beech  
H 815 W 460 D 500 SH 480

SEAT upholstered	NETTO WEIGHT 6,4 kg
	BOX VOLUME 0,37
	PCS PER BOX 2 pcs
	PCS PER CONTAINER 288 pcs



### H-0043

beech  
H 1115 W 500 D 530 SH 780

SEAT upholstered	NETTO WEIGHT 7,4 kg
	BOX VOLUME 0,35
	PCS PER BOX 1 pcs
	PCS PER CONTAINER 160 pcs



### A-0048

beech  
H 815 W 460 D 500 SH 480

SEAT upholstered	NETTO WEIGHT 6,5 kg
	BOX VOLUME 0,37
	PCS PER BOX 2 pcs
	PCS PER CONTAINER 288 pcs



### H-0048

beech  
H 1115 W 500 D 530 SH 780

SEAT upholstered	NETTO WEIGHT 7,6 kg
	BOX VOLUME 0,35
	PCS PER BOX 1 pcs
	PCS PER CONTAINER 160 pcs



### A-0071

beech  
H 810 W 515 D 560 SH 490

SEAT upholstered	NETTO WEIGHT 6,8 kg
	BOX VOLUME 0,37
	PCS PER BOX 2 pcs
PIPING on special request	PCS PER CONTAINER 288 pcs



### ELIZABETH A-6100

beech  
H 965 W 465 D 600 SH 485

SEAT upholstered	NETTO WEIGHT 7,5 kg
	BOX VOLUME 0,37
	PCS PER BOX 1 pcs
	PCS PER CONTAINER 144 pcs



### B-0071

beech  
H 810 W 590 D 610 SH 490 AH 675

SEAT upholstered	NETTO WEIGHT 10,3 kg
	BOX VOLUME 0,36
	PCS PER BOX 1 pcs
PIPING on special request	PCS PER CONTAINER 140 pcs



### ELIZABETH B-6100

beech  
H 965 W 560 D 600 SH 485 AH 670

SEAT upholstered	NETTO WEIGHT 8 kg
	BOX VOLUME 0,45
	PCS PER BOX 1 pcs
	PCS PER CONTAINER 120 pcs



### H-0071

beech  
H 1110 W 590 D 600 SH 800 AH 970

SEAT upholstered	NETTO WEIGHT 11,5 kg
	BOX VOLUME 0,45
	PCS PER BOX 1 pcs
PIPING on special request	PCS PER CONTAINER 120 pcs



### ELIZABETH H-6100

beech  
H 1180 W 465 D 530 SH 760

SEAT upholstered	NETTO WEIGHT 8,7 kg
	BOX VOLUME 0,34
	PCS PER BOX 1 pcs
	PCS PER CONTAINER 160 pcs



### H-0072

beech  
H 1080 W 430 D 540 SH 800

SEAT veneer upholstered	NETTO WEIGHT 7,7 kg
	BOX VOLUME 0,35
	PCS PER BOX 1 pcs
PIPING on special request	PCS PER CONTAINER 160 pcs



### B-3310

beech  
H 830 W 660 D 650 SH 430 AH 575

SEAT upholstered	NETTO WEIGHT 12,4 kg
	BOX VOLUME 0,37
	PCS PER BOX 1 pcs
	PCS PER CONTAINER 138 pcs



### B-5000

beech  
H 825 W 460 D 540 SH 490

SEAT upholstered	NETTO WEIGHT 8 kg
	BOX VOLUME 0,31
	PCS PER BOX 1 pcs
	PCS PER CONTAINER 186 pcs



### B-5001

beech  
H 845 W 550 D 540 SH 480

SEAT upholstered	NETTO WEIGHT 9 kg
	BOX VOLUME 0,36
	PCS PER BOX 1 pcs
	PCS PER CONTAINER 140 pcs



### C-0917

beech  
H 780 W 345

SEAT veneer	NETTO WEIGHT 6 kg
STACKING 3 pcs	BOX VOLUME 0,17
	PCS PER BOX 1 pcs
	PCS PER CONTAINER 360 pcs



### C-0919

beech  
H 780 W 345

SEAT veneer	NETTO WEIGHT 5,9 kg
STACKING 3 pcs	BOX VOLUME 0,17
	PCS PER BOX 1 pcs
	PCS PER CONTAINER 360 pcs



### C-3140

beech  
H 740 W 320

SEAT veneer upholstered	NETTO WEIGHT 2,7 kg
STACKING 3 pcs	BOX VOLUME 0,17
	PCS PER BOX 1 pcs
	PCS PER CONTAINER 360 pcs



### C-3141

beech  
H 800 W 320

SEAT veneer upholstered	NETTO WEIGHT 3,3 kg
STACKING 3 pcs	BOX VOLUME 0,17
	PCS PER BOX 1 pcs
	PCS PER CONTAINER 360 pcs



### C-4346

beech  
H 460 W 370

SEAT	NETTO WEIGHT
veneer	2,2 kg
upholstered	BOX VOLUME
	0,17
	PCS PER BOX
	2 pcs
	PCS PER CONTAINER
	720 pcs



### C-2082

beech  
H 760 W 365

SEAT	NETTO WEIGHT
veneer	6,5 kg
upholstered	BOX VOLUME
	0,17
	PCS PER BOX
	1 pcs
	PCS PER CONTAINER
	360 pcs



### C-4375

beech  
H 750 W 370

SEAT	NETTO WEIGHT
veneer	3 kg
upholstered	BOX VOLUME
	0,17
	PCS PER BOX
	2 pcs
	PCS PER CONTAINER
	360 pcs



### C-3580

beech  
H 760 W 450

SEAT	NETTO WEIGHT
veneer	3,9 kg
upholstered	BOX VOLUME
	0,17
	PCS PER BOX
	1 pcs
	PCS PER CONTAINER
	360 pcs



### C-4303

beech  
H 800 W 370

SEAT	NETTO WEIGHT
veneer	3,2 kg
upholstered	BOX VOLUME
	0,17
	PCS PER BOX
	2 pcs
	PCS PER CONTAINER
	360 pcs



### C-4076

beech  
H 780 W 470

SEAT	NETTO WEIGHT
veneer	5,1 kg
upholstered	BOX VOLUME
	0,17
	PCS PER BOX
	1 pcs
	PCS PER CONTAINER
	360 pcs



### C-4075

beech  
H 810 W 450

SEAT	NETTO WEIGHT
upholstered	5 kg
	BOX VOLUME
	0,17
	PCS PER BOX
	1 pcs
	PCS PER CONTAINER
	360 pcs



### C-0915

beech  
H 820 W 350

SEAT	NETTO WEIGHT
upholstered	6,5 kg
STACKING	BOX VOLUME
3 pcs	0,17
	PCS PER BOX
	1 pcs
PIPING	PCS PER CONTAINER
on special request	360 pcs



### B-8250

beech  
H 1020 W 535 D 1010 SH 520 AH 650

SEAT	NETTO WEIGHT
caned	9,6 kg
	BOX VOLUME
	0,10
	PCS PER BOX
	1 pcs
	PCS PER CONTAINER
	720 pcs



### P-1042

beech  
H 1870 W 665

NETTO WEIGHT  
5 kg



### P-1050

beech  
H 1730 W 700

NETTO WEIGHT  
3,7 kg

Wood finishes – beech water based stain



100  
natural beech

007  
light

046  
rustical

008  
classic

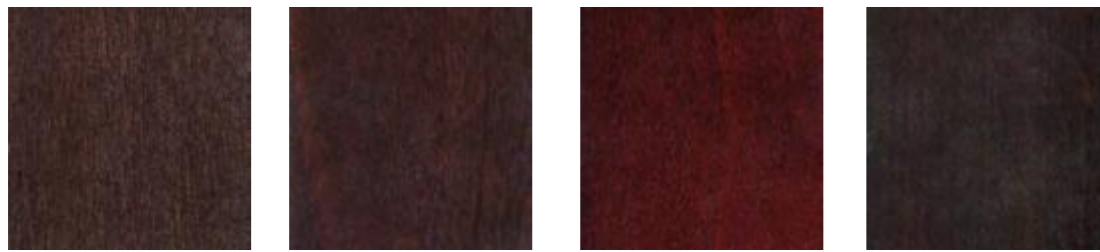


088  
cherry

078  
cherry

023  
palisander

014  
cognac



151  
brown

033  
walnut

190  
cherry

125  
walnut

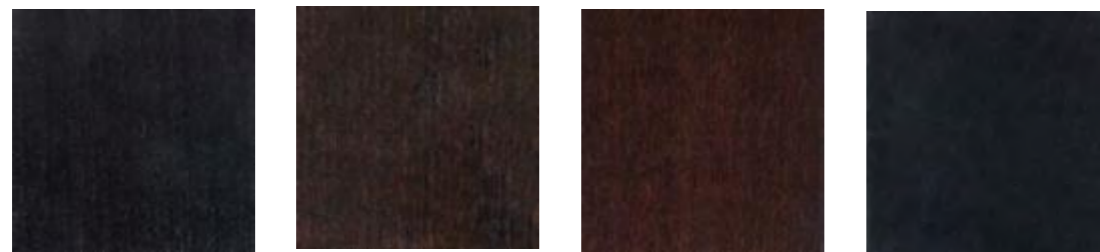


011  
dark

186  
chocolate beech

109  
tudor

086  
venge



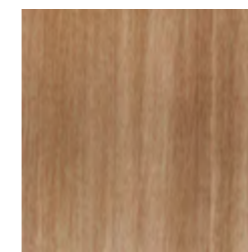
141  
venge

155  
venge

031  
walnut

063  
black

Wood finish – oak water based stain



100  
natural oak

Solid paint (lacquer)



white  
341



black  
342



grey  
328



grey  
394



lazur  
396



sunflower  
312



orange  
386



red chilli  
397

Seat patterns



embossed  
stripes



embossed  
japanese sun

model	name	page	dimensions					stacking	netto weight	brutto weight carton	pcs inside box / volume 40' container load capacity	box volume	carton dimensions	fabric wear standards for 1,4 m wide						
			height	width	depth	seat height	armrest height							1 pc	2 pcs	4 pcs	6 pcs	10 pcs	12 pcs	100 pcs
B-8291		132	820	500	510	460	680	-	4.2	6.5	1szt/140	0.36	620/620/950	0.6	0.6	1.2	1.8	3	3.6	28
H-8291		132	1060	460	525	750	-	-	4.8	7	1szt/160	0.35	520/570/1170	0.6	0.6	1.2	1.8	3	3.6	28
B-8292		132	820	500	510	460	680	-	4.2	6.5	1szt/140	0.36	620/620/950	0.6	0.6	1.2	1.8	3	3.6	28
A-9003		134	810	510	545	460	-	3	3.9	10	2szt/372	0.31	470/670/980	0.6	0.6	1.2	1.8	3	3.6	28
A-9201		151	930	450	510	500	-	-	7	16	2szt/286	0.42	520/750/1070	1.7	1.7	2	2.5	4	5	40
H-9202		151	1070	440	510	800	-	-	7.3	9.5	1szt/160	0.35	520/570/1170	1.7	1.7	2	2.5	4	5	40
H-9250		142	1050	430	510	785	-	-	7.2	9.5	1szt/160	0.35	520/570/1170	0.6	0.6	1.2	1.8	3	3.6	28
A-9231	A-9238	142	840	460	535	475	-	-	4.5	11	2szt/288	0.37	520/720/1000	0.6	0.6	1.2	1.8	3	3.6	28
B-9231	B-9238	142	840	535	535	475	705	3	4.9	7	1szt/140	0.36	620/620/950	0.6	0.6	1.2	1.8	3	3.6	28
A-9440	A-VOGUE	158	810	460	540	480	-	-	6.8	15.5	2szt/288	0.37	520/720/1000	1.7	2.5	4	6.5	11	12	105
M-9441	SVOGUE	158	770	600	630	430	-	-	7.8	10	1szt/153	0.4	720/720/770	1.7	3.3	6.5	10	16	19.5	161
A-9448		142	840	460	535	495	-	3	5.4	12.5	2szt/288	0.37	520/720/1000	0.6	0.6	1.2	1.8	3	3.6	28
B-9448		143	840	535	535	495	705	3	5.3	7.5	1szt/140	0.36	620/620/950	0.6	0.6	1.2	1.8	3	3.6	28
A-9490		143	840	460	535	495	-	3	5.1	12	2szt/288	0.37	520/720/1000	1.2	1.8	3.6	5.4	7	8.4	70
B-9490		143	840	535	535	495	705	3	5.5	7.5	1szt/140	0.36	620/620/950	1.2	1.8	3.6	5.4	7	8.4	70
A-9605	A-DOMO	143	805	440	485	450	-	4	4	10	2szt/372	0.31	470/670/980	0.6	0.6	1.2	1.8	3	3.6	28
A-9705		144	840	460	550	475	-	3	4.5	11	2szt/288	0.37	520/720/1000	0.6	0.6	1.2	1.8	3	3.6	28
B-9705		144	840	535	535	475	705	3	5	7	1szt/140	0.36	620/620/950	0.6	0.6	1.2	1.8	3	3.6	28
H-9705		144	1050	430	510	785	-	-	7.2	9.5	1szt/160	0.35	520/570/1170	0.6	0.6	1.2	1.8	3	3.6	28
A-9850	A-ANTILLA	136	835	480	515	450	-	-	4.5	11	2szt/288	0.37	520/720/1000	0.6	0.6	1.2	1.8	3	3.6	28
B-9850	B-ANTILLA	136	835	570	515	450	670	-	5	7	1szt/140	0.36	620/620/950	0.6	0.6	1.2	1.8	3	3.6	28
C-9850	C-ANTILLA	136	780	460	350	-	-	-	4.3	6.3	1szt/310	0.18	420/500/840	-	-	-	-	-	-	-
H-9850	H-ANTILLA	136	1105	530	570	780	-	-	5	7	1szt/160	0.35	520/570/1170	0.6	0.6	1.2	1.8	3	3.6	28
A-9880	A-ANTILLAL	137	970	420	550	450	-	-	4.5	11	2szt/286	0.42	520/750/1070	0.6	0.6	1.2	1.8	3	3.6	28
B-9911		157	845	600	565	480	700	-	9	11	1szt/140	0.36	620/620/950	1.7	2.2	4.2	6.5	10	12.5	100
H-9927		150	1130	490	460	750	-	-	7.5	9.5	1szt/160	0.35	520/570/1170	0.6	0.6	1.2	1.8	3	3.6	28
H-9950		151	1130	480	490	790	-	-	6.6	9	1szt/160	0.35	520/570/1170	1.7	1.7	2	2.7	4.8	5.8	48



### TOMEK RYGALIK

Well-known furniture designer worldwide. He graduated from Industrial Design at the Pratt Institute in New York and Royal College of Art in London. He worked with several design companies in USA – including Kodak, Polaroid, Mtv, Perkinelmer, Dentsply, Unilever, Dupont etc. He established his own design studios in London and Warsaw.



### MAŁGORZATA PĘKALA

Graduated from the Faculty of Design and Interior Design Academy of Fine Arts in Wrocław, and studied at the National School of Fine Arts “im. Antoniego Kenara” in Zakopane. It is a designer of furniture, interiors, exhibitions, set design and fabrics. She designs furniture for mass production as copies of copyright. In 2007-2008 she was designing furniture for Paged Meble.



### NIKODEM SZPUNAR

The designer who comes from Rzeszow – Poland. He graduated from Academy of Fine Arts in Warsaw and National College of Art&Design. His projects were presented in many places in the World like London, Milan, Vienna and Hong Kong. Since 2013 he has been running the design studio with Kamila Niedzwiedzka in Warsaw.

### PAGED DESIGN TEAM

means the cooperation and dedication, which result in the joint designs of beautiful and ergonomic furniture. Paged Design Team is composed of the employees of various departments – technological, product development, marketing and sales: Witold Drożdżik, Grzegorz Gancarczyk, Michał Paterka, Andrzej Pękala, Zbigniew Sroka and others. The team is working at three facilities located in Jasienica, Sędziszów Małopolski and Jarocin.



### JADWIGA HUSARSKA-SOBINA

Product designer working in furniture industry since 2007. Graduated from Industrial Design at Academy of Fine Arts in Krakow, Poland. Studied at Lahti Institute of Design, Finland and at University of Arts and Design in Budapest, Hungary. Finalist in Fortis Young Design Contest 2008 for Polish best young designer. Awarded at numerous national and international design competitions.



### KINGA CHMIELARZ

Graduated from Industrial Design at Academy of Fine Arts in Krakow, Poland. Scholarship CEEPUS program holder (VSVU Bratislava, Slovakia). Graduated from FAMA's Open Fashion Design Studio. In partnership with Paged Meble S.A. she created SHELLter armchair which has been exhibited during 2011 Milan furniture fair.



		specifications				dimensions		stacking		netto weight		brutto weight carton		pcs inside 40' container load capacity		box volume		carton dimensions		fabric wear standards for 1,4 m wide						
model	name	page	height	width	depth	seat height	armrest height	stacking	netto weight	brutto weight carton	pcs inside 40' container load capacity	box volume	carton dimensions	fabric wear standards for 1,4 m wide												
														1 pc	2 pcs	4 pcs	6 pcs	10 pcs	12 pcs	100 pcs						
B-4100	BYESTERDAY	137	790	550	495	475	680	-	6	8	15zt/140	0,36	620/620/950	0,6	0,6	1,2	1,8	3	3,6	3,6	28					
C-4303		166	800	370	-	-	-	-	3,2	5	15zt/360	0,17	420/420/950	0,5	0,5	1	1	2	2	2	17					
C-4346		166	460	370	-	-	-	-	2,2	6	25zt/720	0,17	420/420/950	0,5	0,5	1	1	2	2	2	17					
A-4350	A-UUVU	139	780	460	510	470	-	-	4,9	11	25zt/372	0,31	470/670/980	0,6	0,6	1,2	1,8	3	3,6	3,6	28					
H-4350	H-UUVU	139	1035	470	520	800	-	-	6,4	8	15zt/160	0,35	520/570/1170	0,6	0,6	1,2	1,8	3	3,6	3,6	28					
A-4351		138	790	455	510	470	-	-	4,9	11	25zt/372	0,31	470/670/980	0,6	0,6	1,2	1,8	3	3,6	3,6	28					
C-4375		166	750	370	-	-	-	-	3	5	15zt/360	0,17	420/420/950	0,5	0,5	1	1	2	2	2	17					
A-4390	PROB	139	825	445	570	465	-	-	5,2	12,5	25zt/288	0,37	520/720/1000	0,6	0,6	1,2	1,8	3	3,6	3,6	28					
B-4390	PROB	140	825	600	585	465	670	-	6,8	8,8	15zt/140	0,36	620/620/950	0,6	0,6	1,2	1,8	3	3,6	3,6	28					
C-4390	PROB	140	780	505	460	-	-	-	5,7	7,7	15zt/160	0,35	520/570/1170	-	-	-	-	-	-	-	-					
H-4390	PROB	141	1020	515	495	785	-	-	6,8	9	15zt/160	0,35	520/570/1170	0,6	0,6	1,2	1,8	3	3,6	3,6	28					
A-4395	PROB	139	825	445	570	500	-	-	6	14	25zt/288	0,37	520/720/1000	1,1	1,5	2,5	3,5	6	7	7	60					
B-4395	PROB	140	825	600	585	500	670	-	7,9	10	15zt/140	0,36	620/620/950	1,1	1,5	2,5	3,5	6	7	7	60					
B-4398	PROB	140	825	600	585	500	695	-	7,9	10	15zt/140	0,36	620/620/950	2	2,6	5	6,5	12	14,5	12	120					
A-4570		152	840	475	540	480	-	-	5	12	25zt/288	0,37	520/720/1000	2	2	2	2,5	4	5	4	40					
B-4570		152	840	560	550	480	665	-	7	9,5	15zt/140	0,36	620/620/950	2	2	2,2	2,7	4,8	5,5	4,8	48					
H-4570		152	1120	490	500	790	-	-	8	10	15zt/160	0,35	520/570/1170	2	2	2	2,5	4	5	4	40					
A-4578		152	845	475	540	480	-	-	5,3	12,5	25zt/288	0,37	520/720/1000	2	2	2,5	3,8	6,5	7,5	6,6	66					
B-4578		133	845	560	550	480	665	-	8,7	10	15zt/140	0,36	620/620/950	2	2	3	4,2	7,1	8,5	7,1	71					
H-4720		150	1070	430	500	770	-	-	6	8	15zt/160	0,35	520/570/1170	0,6	0,6	1,2	1,8	3	3,6	3,6	28					
A-4721		150	855	420	500	460	-	-	4,2	10,5	25zt/372	0,31	470/670/980	0,6	0,6	1,2	1,8	3	3,6	3,6	20					
B-5000		164	825	460	540	490	-	-	8	10	15zt/186	0,31	470/670/980	1,8	3	6	9	15	18	150						
B-5001		164	845	550	540	480	-	-	9	11	15zt/140	0,36	620/620/950	2	3,5	6,5	10,5	16,5	20	165	150					
A-5170		134	790	440	490	460	-	-	3,8	10	25zt/372	0,31	470/670/980	0,6	0,6	1,2	1,8	3	3,6	3,6	28					
H-5170		134	1065	440	475	770	-	-	5,5	7,5	15zt/160	0,35	520/570/1170	0,6	0,6	1,2	1,8	3	3,6	3,6	28					
A-5172		133	790	440	490	460	-	-	3,8	10	25zt/372	0,31	470/670/980	0,6	0,6	1,2	1,8	3	3,6	3,6	28					
B-5172		133	790	540	485	460	740	-	4,3	11	25zt/288	0,37	520/720/1000	0,6	0,6	1,2	1,8	3	3,6	3,6	28					
H-5172		133	1140	540	480	800	1090	-	6	8	15zt/160	0,35	520/570/1170	0,6	0,6	1,2	1,8	3	3,6	3,6	28					
B-5182		133	825	550	520	460	740	-	4,7	12	25zt/280	0,36	620/620/950	0,6	0,6	1,2	1,8	3	3,6	3,6	28					
A-5200		146	840	430	520	460	-	-	6	14	25zt/288	0,37	520/720/1000	0,6	0,6	1,2	1,8	3	3,6	3,6	28					

		specifications										fabric wear standards for 1,4 m wide									
model	name	page	dimensions				seat height	armrest height	stacking	netto weight	brutto weight carton	pcs inside 40' container load capacity	box volume	carton dimensions	fabric wear standards for 1,4 m wide						
			height	width	depth	height									armrest height	1 pc	2 pcs	4 pcs	6 pcs	10 pcs	12 pcs
B-5200		146	840	525	520	460	670	-	6,3	8,5	15zt/140	0,36	620/620/950	0,6	0,6	1,2	1,8	3	3,6	3,6	28
H-5200		146	1100	460	480	760	-	-	7	9	15zt/160	0,35	520/570/1170	0,6	0,6	1,2	1,8	3	3,6	3,6	28
H-5206		148	1100	430	520	790	-	-	7,5	9,5	15zt/160	0,35	520/570/1170	0,6	1,5	2,5	3,5	5	6	6	50
A-5210		146	840	430	520	460	-	-	6	14	25zt/288	0,37	520/720/1000	0,6	0,6	1,2	1,8	3	3,6	3,6	28
B-5210		147	840	525	520	460	670	-	6,3	8,5	15zt/140	0,36	620/620/950	0,6	0,6	1,2	1,8	3	3,6	3,6	28
H-5210		147	1100	460	480	760	-	-	7	9	15zt/160	0,35	520/570/1170	0,6	0,6	1,2	1,8	3	3,6	3,6	28
A-5245		147	840	430	520	480	-	-	6	14	25zt/286	0,42	520/750/1070	0,6	0,6	1,2	1,8	3	3,6	3,6	28
B-5245		147	840	525	520	460	670	-	6,5	8,5	15zt/140	0,36	620/620/950	0,6	0,6	1,2	1,8	3	3,6	3,6	28
H-5245		148	1100	460	480	790	-	-	7	9	15zt/160	0,35	520/570/1170	0,6	0,6	1,2	1,8	3	3,6	3,6	28
A-5281		154	880	520	520	480	700	-	4,5	11	25zt/288	0,37	520/720/1000	0,6	0,6	1,2	1,8	3	3,6	3,6	28
B-5281		154	880	460	520	480	-	-	6	8	15zt/140	0,36	620/620/950	0,6	0,6	1,2	1,8	3	3,6	3,6	28
H-5281		154	1120	470	535	790	-	-	6,5	8,5	15zt/160	0,35	520/570/1170	0,6	0,6	1,2	1,8	3	3,6	3,6	28
A-5406		148	855	490	490	480	-	-	6	14	25zt/288	0,37	520/720/1000	0,6	1,5	2,5	3,5	5	6	6	50
B-5406		148	855	530	490	480	700	-	6,5	8,5	15zt/140	0,36	620/620/950	0,6	1,5	2,5	3,5	5	6	6	50
A-5410		149	855	490	490	450	-	-	6	14	25zt/288	0,37	520/720/1000	0,6	0,6	1,2	1,8	3	3,6	3,6	28
B-5410		149	855	530	490	450	700	-	6,5	8,5	15zt/140	0,36	620/620/950	0,6	0,6	1,2	1,8	3	3,6	3,6	28
A-5550		144	860	450	530	450	-	-	5,3	12,5	25zt/372	0,31	470/670/980	0,6	0,6	1,2	1,8	3	3,6	3,6	28
A-6100	A-ELIZABETH	162	965	465	600	485	-	-	7,5	9,5	15zt/144	0,37	520/720/1000	1,5	2	3,5	5,5	8,3	9	8,3	83
B-6100	B-ELIZABETH	162	965	560	600	485	670	-	8	10	15zt/122	0,4	620/620/1050	1,5	2	3,5	5,5	8,3	9	8,3	83
H-6100	H-ELIZABETH	162	1180	465	530	760	-	-	8,7	11	15zt/160	0,34	490/580/1210	1,5	2	3,5	5,5	8,3	9	8,3	83
A-6421		134	810	415	485	450	-	-	3,5	9	25zt/372	0,31	470/670/980	0,6	0,6	1,2	1,8	3	3,6	3,6	28
A-6500		149	885	470	520	455	-	-	9,5	21	25zt/288	0,37	520/720/1000	0,6	0,6	1,2	1,8	3	3,6	3,6	28
A-6620		145	820	425	510	460	-	-	4,3	11	25zt/372	0,31	470/670/980	0,6	0,6	1,2	1,8	3	3,6	3,6	28
B-6620		145	860	580	580	460	710	-	5	7	15zt/150	0,32	610/600/890	0,7	0,7	1,4	2	3,3	4	3,3	33
A-8110		131	805	445	530	460	-	-	3	8	25zt/372	0,31	470/670/980	1	1,5	2,7	3,8	6,5	7,5	6,5	61
B-8110		131	805	505	530	460	700	-	5,5	7,5	15zt/140	0,36	620/620/950	1	1,5	2,7	3,8	6,5	7,5	6,5	61
H-8110		131	1085	410	500	750	-	-	5	7	15zt/160	0,35	520/570/1170	0,6	0,6	1,2	1,8	3	3,6	3,6	28
B-8250		168	1020	535	1010	520	650	-	9,6	12	15zt/720	0,41	130/750/1000	-	-	-	-	-	-	-	-
A-8291		132	820	445	510	460	-	-	3,7	10	25zt/372	0,31	470/670/980	0,6	0,6	1,2	1,8	3	3,6	3,6	28

specifications																				
model	name	page	dimensions				stacking	netto weight	brutto weight carton	pcs inside box/volume 40' container load capacity pcs	box volume	carton dimensions	fabric wear standards for 1,4 m wide							
			height	width	depth	seat height							armrest height	1 pc	2 pcs	4 pcs	6 pcs	10 pcs	12 pcs	100 pcs
A-0010		156	830	435	560	480	-	6	14	25zt/330	0.36	460/760/1030	1.7	2	3.6	5.5	8	9.6	80	
H-0010		156	1070	435	560	790	-	6.7	9.7	15zt/160	0.35	520/570/1170	1.7	2	3.6	5.5	8	9.6	80	
B-0011		156	830	520	560	480	700	7.1	9.5	15zt/140	0.36	620/620/950	1.7	2	3.6	5.5	8	9.6	80	
A-0023		155	830	425	540	480	-	5.5	13	25zt/330	0.36	460/760/1030	1.7	1.7	2	2.5	4	5	40	
H-0023		155	1070	440	550	790	-	6	8	15zt/160	0.35	520/570/1170	1.7	1.7	2	2.5	4	5	40	
A-0027		154	835	425	530	450	-	4.5	11	25zt/372	0.31	470/670/980	0.6	0.6	1.2	1.8	3	3.6	28	
B-0027		155	835	520	530	450	700	5.6	8	15zt/140	0.36	620/620/950	0.6	0.6	1.2	1.8	3	3.6	28	
H-0027		155	1080	440	545	750	-	5.6	8	15zt/160	0.35	520/570/1170	0.6	0.6	1.2	1.8	3	3.6	28	
A-0039		150	835	405	510	450	-	4.2	10.5	25zt/372	0.31	470/670/980	0.6	0.6	1.2	1.8	3	3.6	28	
A-0042		160	815	460	500	480	-	6.4	15	25zt/288	0.37	520/720/1000	1.7	2.9	5.2	7.8	13	15.6	120	
H-0042		160	1115	500	530	780	-	7.5	9.5	15zt/160	0.35	520/570/1170	1.7	2.9	5.2	7.8	13	15.6	120	
A-0043		160	815	460	500	480	-	6.3	14.5	25zt/288	0.37	520/720/1000	0.6	0.6	1.2	1.8	3	3.6	28	
H-0043		160	1115	500	530	780	-	7.4	9.5	15zt/160	0.35	520/570/1170	0.6	0.6	1.2	1.8	3	3.6	28	
A-0045		161	815	460	500	480	-	6.5	15	25zt/288	0.37	520/720/1000	1.5	2.5	4.5	6.6	11	13.2	100	
H-0045		161	1115	500	530	790	-	7.6	9.5	15zt/160	0.35	520/570/1170	1.5	2.5	4.5	6.6	11	13.2	100	
A-0046		161	815	460	500	480	-	6.4	15	25zt/288	0.37	520/720/1000	1.5	1.5	3.7	4.8	7	8.4	70	
A-0048		161	815	460	500	480	-	6.5	15	25zt/288	0.37	520/720/1000	1.7	2.5	4	5.5	8.5	10	85	
H-0048		162	1115	500	530	790	-	7.6	9.5	15zt/160	0.35	520/570/1170	1.7	2.5	4	5.5	8.5	10	85	
A-0071		163	810	515	560	490	-	6.8	15.5	25zt/288	0.37	520/720/1000	2	3	5.5	8	12	15	115	
B-0071		163	810	590	610	490	675	10.3	12	15zt/140	0.36	620/620/950	2	3.6	7.2	11	19	22.5	187	
H-0071		163	1110	590	600	800	970	7.7	9.7	15zt/120	0.45	620/620/1170	2	3.6	7.2	11	19	22.5	187	
H-0072		163	1080	430	540	800	-	11.5	13.5	15zt/160	0.35	520/570/1170	2	3	5.5	8	12.5	15	123	
H-0225		157	1090	440	560	820	-	7.6	10.5	15zt/160	0.35	520/570/1170	1.7	2	3.6	5.5	8	9.6	80	
A-0441	AVENTURA	158	785	535	575	430	-	8.6	10	15zt/140	0.36	620/620/950	2.1	2.6	5	7.5	12.5	15	125	
B-0441	BVENTURA	158	785	620	585	430	660	9.8	11.5	15zt/138	0.37	660/660/860	2.1	2.6	5	7.5	12.5	15	125	
A-0760	ASWING	159	940	500	560	500	-	6.5	8.5	15zt/144	0.37	520/720/1000	1.7	2.6	5.5	8	12	14.5	120	
A-0910		156	830	435	560	480	-	6.3	14.5	25zt/330	0.36	460/760/1030	1.7	2	4.2	6.5	10	11.5	87	
H-0910		157	1070	435	560	790	-	6.7	9.7	15zt/160	0.35	520/570/1170	1.7	2	4.2	6.5	10	11.5	87	
B-0911		157	830	520	560	480	700	8	10	15zt/140	0.36	620/620/950	1.7	2	4.2	6.5	10	11.5	87	
C-0915		167	820	350	-	-	-	6.5	8.5	15zt/360	0.17	420/420/950	1.5	1.5	1.5	1.5	3	4.6	5.5	40

### specifications

model	name	page	dimensions				stacking	netto weight	brutto weight carton	pcs inside box/volume 40' container load capacity pcs	box volume	carton dimensions	fabric wear standards for 1,4 m wide						
			height	width	depth	seat height							armrest height	1 pc	2 pcs	4 pcs	6 pcs	10 pcs	12 pcs
C-0917		165	780	345	-	-	-	6	8	15zt/360	0.17	420/420/950	-	-	-	-	-	-	-
C-0919		165	780	345	-	-	-	5.9	8	15zt/360	0.17	420/420/950	-	-	-	-	-	-	-
A-0990		153	920	460	540	480	-	6	14	25zt/288	0.37	520/720/1000	1.1	1.6	2.7	3.8	6.5	7.6	65
B-0990		153	920	530	540	480	695	7	9	15zt/140	0.36	620/620/950	1.1	1.6	2.7	3.8	6.5	7.6	65
P-1042		168	1870	665	-	-	-	5	-	-	-	-	-	-	-	-	-	-	-
P-1050		168	1730	700	-	-	-	3.7	-	-	-	-	-	-	-	-	-	-	-
A-1230		135	870	460	500	460	-	3.6	9	25zt/330	0.36	460/760/1030	0.6	0.6	1.2	1.8	3	3.6	28
H-1230		135	1085	460	540	770	-	5.5	7.5	15zt/160	0.35	520/570/1170	0.6	0.6	1.2	1.8	3	3.6	28
A-1260	AMOON	135	800	450	480	460	-	3.6	9	25zt/372	0.31	470/670/980	0.6	0.6	1.2	1.8	3	3.6	28
H-1260	HMOON	135	1080	450	480	770	-	5.5	7.5	15zt/160	0.35	520/570/1170	0.6	0.6	1.2	1.8	3	3.6	28
A-1840		130	880	420	530	460	-	3.1	8	25zt/372	0.31	470/670/980	0.6	0.6	1.2	1.8	3	3.6	28
H-1840		130	1090	440	540	780	-	4.7	7	15zt/160	0.35	520/570/1170	0.6	0.6	1.2	1.8	3	3.6	28
A-1845		130	880	410	560	460	-	3.1	8	25zt/372	0.31	470/670/980	0.6	0.6	1.2	1.8	3	3.6	28
A-1880		130	880	420	530	460	-	3.1	8	25zt/372	0.31	470/670/980	0.6	0.6	1.2	1.8	3	3.6	28
A-2000	AMETYST	145	835	425	520	460	-	4.6	11.5	25zt/372	0.31	470/670/980	0.6	0.6	1.2	1.8	3	3.6	28
H-2000	HAMETYST	145	1065	440	510	760	-	5.6	8	15zt/160	0.35	520/570/1170	0.6	0.6	1.2	1.8	3	3.6	28
A-2030	AMALACHIT	159	850	450	560	490	-	6.3	15	25zt/288	0.37	520/720/1000	0.8	1.4	2.8	4	7	8	77
B-2030	BMALACHIT	159	850	550	560	490	690	7.5	9.5	15zt/140	0.36	620/620/950	0.8	1.4	2.7	4	7	8	77
H-2030	HMALACHIT	159	1065	450	540	800	-	7.5	9.5	15zt/160	0.35	520/570/1170	0.8	1.4	2.7	4	7	8	77
C-2082		167	780	370	-	-	-	6.5	8.5	15zt/360	0.17	420/420/950	-	-	-	-	-	-	-
H-2090	HXSTOOL	138	905	465	520	750	-	3.8	5	15zt/160	0.31	470/670/980	-	-	-	-	-	-	-
A-2094	AXCHAIR4	138	870	440	530	460	-	4.9	12	25zt/372	0.31	470/670/980	-	-	-	-	-	-	-
A-2094	AXCHAIR4UPH	138	880	440	530	470	-	4.9	12	25zt/372	0.31	470/670/980	-	-	-	-	-	-	-
C-3140		165	740	320	-	-	-	2.7	5	15zt/360	0.17	420/420/950	1.5	1.7	3.3	5	8	10	80
C-3141		165	800	320	-	-	-	3.3	5.5	15zt/360	0.17	420/420/950	0.5	0.5	1	1	2	2	17
B-3310		164	830	660	650	430	575	12.4	15	15zt/138	0.37	660/660/860	2.3	4	8	12	23	27	230
C-3580		167	760	450	-	-	-	3.9	6	15zt/360	0.17	420/420/950	0.5	0.5	1	1	2	2	17
C-4075		166	810	450	-	-	-	5	7	15zt/360	0.17	420/420/950	1.3	1.3	1.3	2	3	3.6	28
C-4076		167	780	470	-	-	-	5.1	7	15zt/360	0.17	420/420/950	0.6	0.6	1.2	1.8	3	3.6	20
A-4100	AYESTERDAY	137	780	450	495	475	-	4.2	9	25zt/330	0.36	460/760/1030	0.6	0.6	1.2	1.8	3	3.6	28

		specifications																		
model	name	page	dimensions			seat height	armrest height	stacking	netto weight	brutto weight carton	pcs inside box/volume 40' container load capacity pcs	box volume	carton dimensions	fabric wear standards for 1,4 m wide						
			height	width	depth									1 pc	2 pcs	4 pcs	6 pcs	10 pcs	12 pcs	100 pcs
A-1070	ALDO	116	830	490	540	460	-	3	4,3	10,6	2 pcs/288	0,34	520/720/1000	-	-	-	-	-	-	-
H-1070	ALDO	116	1060	480	510	780	-	-	5,3	7,3	1 pc/160	0,32	520/570/1170	-	-	-	-	-	-	-
A-8120	BENKO	116	805	445	540	460	-	-	3	8	2 pcs/372	0,28	470/670/980	-	-	-	-	-	-	-
B-8120	BENKO	116	805	615	530	460	660	-	6	8	1 pc/140	0,33	620/620/950	-	-	-	-	-	-	-
A-DUB	DUB	117	900	450	600	470	-	-	8	19	2 pcs/160	0,36	480/740/1000	0,65	1,30	2,60	3,90	6,50	7,80	-
B-DUB	DUB	117	900	620	620	470	645	-	10	13	1 pc/150	0,38	640/640/930	0,65	1,30	2,60	3,90	6,50	7,80	-
M-DUB	DUB	117	780	620	620	420	560	-	10	13	1 pc/170	0,33	640/640/810	0,65	1,30	2,60	3,90	6,50	7,80	-
B-2940	EVO	118	775	580	540	460	640	-	4	6	1 pc/140	0,33	620/620/950	-	-	-	-	-	-	-
H-2940	EVO	118	950	570	560	760	820	-	5,7	7,5	1 pc/120	0,41	620/620/1170	-	-	-	-	-	-	-
B-FUM 1	FUM	118	810	715	670	465	-	-	13	16	1 pc/130	0,44	700/750/830	2,90	5,80	10,00	15,00	25,00	30,00	-
B-FUM 2	FUM	118	810	715	670	465	-	-	15	18	1 pc/130	0,44	700/750/830	3,20	6,40	12,00	17,00	29,00	34,00	-
M-FUM	FUM	119	690	715	670	400	-	-	13	16	1 pc/150	0,37	700/750/710	3,00	6,00	11,00	16,00	27,00	32,00	-
A-3701	HIP	119	802	-	507	445	-	-	6	15	2 pcs/370	0,31	520/620/950	-	-	-	-	-	-	-
B-3701	HIP	119	802	581	507	445	657	-	7	10	1 pc/220	0,26	525/600/825	-	-	-	-	-	-	-
A-3702	HIP	119	802	-	507	480	-	-	7	17	2 pcs/310	0,37	590/620/1000	0,6	1,2	1,8	2,4	4,2	4,8	4,2
B-3702	HIP	120	802	581	507	480	657	-	8	11	1 pc/220	0,26	525/600/825	0,6	1,2	1,8	2,4	4,2	4,8	4,2
A-2220	K2	120	980	440	520	510	-	-	7,4	16,8	2 pcs/288	0,41	570/670/1070	1,7	2,2	3,5	5,5	8,5	9	8,5
B-2220	K2	120	730	585	670	480	-	-	12	14	1 pc/153	0,37	720/720/770	2	2,5	4,5	7	7	9,5	7,0
C-2220	K2	121	480	670	-	-	-	-	7,8	10	1 pc/153	0,37	720/720/770	2	2	3,5	5,6	7	7,5	6,5
H-2220	K2	121	835	440	445	750	-	-	7	9	1 pc/186	0,28	470/670/980	1,7	1,7	2	2,7	4,8	5,8	4,8
C-2225	K2	120	480	620	-	-	-	-	7,8	10	1 pc/153	0,37	720/720/770	2	2,6	5,2	7,2	13	15,6	13,0
A-5035	K-3	122	850	480	535	480	-	-	6,5	15	2 pcs/288	0,34	520/720/1000	2	2	4	6	8	10	8,0
A-2120	LINK	122	835	500	540	460	-	3	7	16	2 pcs/340	0,34	520/645/1020	0,6	0,6	1,2	1,8	3	3,6	3,2
B-2120	LINK	122	835	500	540	460	660	3	7	10	1 pc/230	0,25	52/560/850	0,6	0,6	1,2	1,8	3	3,6	3,2
A-4290	LOF	123	820	465	545	480	-	-	6	14	2 pcs/288	0,34	520/720/1000	0,7	0,7	1,4	2	3,3	4	3,3
A-4291	LOF	123	820	460	545	480	-	-	6	14	2 pcs/288	0,34	520/720/1000	0,7	0,7	1,4	2	3,3	4	3,3
A-4292	LOF	124	820	490	545	480	-	-	6	14	2 pcs/288	0,34	520/720/1000	0,7	0,7	1,4	2	3,3	4	3,3
A-4294	LOF	124	820	460	545	460	-	-	6,5	15	2 pcs/288	0,34	520/720/1000	0,6	0,6	1,2	1,8	3	3,6	2,8
A-4298	LOF	124	820	490	545	460	-	-	6,5	15	2 pcs/288	0,34	520/720/1000	0,6	0,6	1,2	1,8	3	3,6	2,8
A-4299	LOF	123	820	465	545	460	-	-	6,5	15	2 pcs/288	0,34	520/720/1000	0,6	0,6	1,2	1,8	3	3,6	2,8

specifications																				
model	name	page	dimensions			seat height	armrest height	stacking	netto weight	brutto weight carton	pcs inside box/volume 40' container load capacity pcs	box volume	carton dimensions	fabric wear standards for 1,4 m wide						
			height	width	depth									1 pc	2 pcs	4 pcs	6 pcs	10 pcs	12 pcs	100 pcs
A-4281	LOF	123	820	440	545	460	-	-	6	14	2 pcs/288	0,34	520/720/1000	0,7	0,7	1,4	2	3,3	4	3,3
A-4282	LOF	123	820	440	545	480	-	-	6,5	15	2 pcs/288	0,34	520/720/1000	0,7	1,3	2,6	3,9	6,5	7,8	6,5
LOREM	LOREM	124	850	462	513	465	-	-	5	13	2 pcs/380	0,30	465/680/960	0,6	1,2	3,5	5,8	7,8	5,8	5,8
B-5005	LUBI	125	805	560	540	480	-	-	4,5	6,5	1 pc/140	0,33	620/620/950	2,7	5	7,5	11	17	20	16,5
H-5005	LUBI	125	885	480	460	760	-	-	6,8	9	1 pc/144	0,34	520/720/1000	2	3	6	8,7	12	15	12,0
B-3210	SEN	125	830	700	610	450	630	-	12	15	1 pc/140	0,39	720/850/630	3,50	5,50	11,00	16,00	26,00	32,00	-
A-2160	TOLO	125	815	550	490	460	-	3	4,8	11,5	2 pcs/244	0,4	620/620/1050	-	-	-	-	-	-	-
H-2160	TOLO	126	1060	570	455	790	-	-	6,5	8,5	1 pc/120	0,41	620/620/1170	-	-	-	-	-	-	-
A-2160	TOLO uph	126	795	550	490	480	-	3	5,3	12,5	2 pcs/244	0,4	620/620/1050	0,7	0,7	1,4	2	3,3	4	3,3
H-2160	TOLO uph	126	1060	570	455	820	-	-	7	9	1 pc/120	0,41	620/620/1170	0,7	0,7	1,4	2	3,3	4	3,3
A-2920	UXI	126	770	450	510	480	-	3	5,5	13	2 pcs/288	0,34	520/720/1000	0,6	0,6	1,2	1,8	3	3,6	2,8
B-2920	UXI	126	770	530	530	480	715	3	8	10	1 pc/147	0,25	570/570/830	0,6	0,6	1,2	1,8	3	3,6	2,8
H-2920	UXI	127	1080	530	565	790	1025	2	6,8	8,8	1 pc/120	0,41	620/620/1170	0,6	0,6	1,2	1,8	3	3,6	2,8
B-ZAP 1	ZAP	127	845	600	560	450	650	-	12	-	1 pc/170	0,33	590/640/880	2,10	4,20	8,00	12,00	19,00	23,00	-
B-ZAP-2	ZAP	127	850	600	560	450	650	-	12	-	1 pc/170	0,33	590/640/880	3,00	6,00	10,50	16,00	26,00	32,00	-
H-ZAP	ZAP	127	1180	600	560	780	980	-	15	17	1 pc/120	0,46	590/640/1220	2,10	4,20	8,00	12,00	19,00	23,00	-

Paged Meble S.A. with its registered office in Jasienica hereby informs that due to the production processes and technologies as well as due to the structure of wood and natural veneers characterised by different shades, colours, rings, medullary rays and design depending on the habitat conditions of the tree from which they have been produced and because of the diversity of batches of goods, there may be certain differences in the shades of colours of particular pieces of furniture even in case of purchasing several pieces of the same product from a given furniture collection offered by Paged Meble S.A. with its registered office in Jasienica.

This catalogue is for informational purposes only and does not constitute an offer within the meaning of the Civil Code Act of Dz. U. 2014 r. poz. 121. Due to the limitations of printing technology, the colors shown in this catalogue may differ from the actual colors of furniture. Decorative items shown in the pictures are merely decoration arrangement and are not offered for sale by Paged Meble SA with headquarters in Jasienica. All data and information in this catalog should be consider binding in the month of printing (March 2017).

[www.paged.pl](http://www.paged.pl)

Paged Meble SA  
ul. Cieszyńska 99, Jasienica  
Poland