

# mula

design:  
Piotr Kuchciński  
2005



Elegant form and carefully prepared details combined with the comfort of use emphasize timeless beauty of the furniture. The collection refers to the trends of the 60s in terms of its design. Thanks to the possibility of choosing the legs (stainless steel, painted metal and wooden legs), MULA sofas, armchairs and poufs may be placed in both modern and classic interiors.



d\_68  
g\_72  
w\_69



d\_68  
g\_72  
w\_70



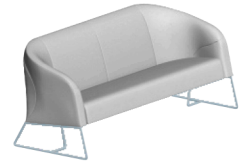
d\_68  
g\_72  
w\_72



d\_68  
g\_72  
w\_72



d\_128  
g\_72  
w\_72



d\_188  
g\_72  
w\_72



d\_128  
g\_72  
w\_69



d\_188  
g\_72  
w\_69



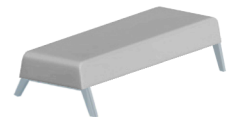
d\_128  
g\_72  
w\_70



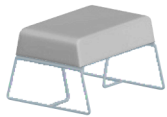
d\_188  
g\_72  
w\_70



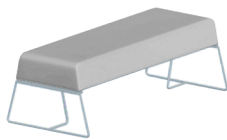
d\_68  
g\_58  
w\_39



d\_128  
g\_58  
w\_39



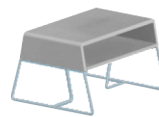
d\_68  
g\_58  
w\_42



d\_128  
g\_58  
w\_42



d\_128  
g\_58  
w\_42



d\_68  
g\_58  
w\_42