

# Alcuni Rivestimenti      Some Upholsteries

- Colori, tessuti e pelli fotografati sono indicativi
- Colours, fabrics and leathers photographed are indicative

## AVVERTENZE GENERALI

I colori chiari, non devono essere messi a contatto con tessuti e capi d'abbigliamento trattati con coloranti non fissati, o con scarse solidità di tintura, onde evitare macchie ed aloni di coloranti di cui non possiamo garantire la pulitura.

## GENERAL WARNINGS

To avoid permanent stains, the lighter colours of the article should not be brought into contact with textiles and clothing unfixed dyes. We cannot guarantee the ability to remove unknown dyes from light coloured product.



# A

## Categoria Category

Resistenza alla fiamma - Fire resistance  
Certificato Classe 1 UNI 9175 CL. 1 IM  
87,5% P.V.C. plastificato - 12,5% cotone  
(Martindale 100.000)



PLANET



A 31 F



A 32 F



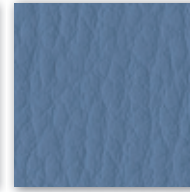
A 29 F



A 37 F



A 28 F



A 30 F



A 35 F



A 26 F



A 34 F



A 38 F



A 39 F



A 36 F



A 27 F

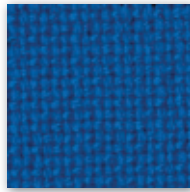
# B

## Categoria Category

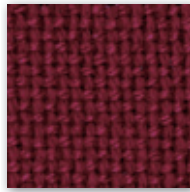
Tessuto altamente ignifugo  
Certificato Classe 1  
Ministero dell'Interno  
Fireproof fabric - Tissu non feu  
Brandfester Bezug - Tela ignifuga  
100% polipropilene FR - Polypropylene FR  
(Martindale 80.000)



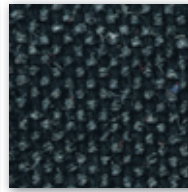
B 259



B 263



B 265



B 267



B 254

# C

## Categoria Category

SKILL/SECRET  
Resistenza alla fiamma - Fire resistance  
Certificato Classe 1 UNI 9175 CL. 1IM - EN 1021 - BS 5852  
69% P.V.C. plastificato - 30% cotone - 1% poliuretano  
(Martindale 50.000)



SKILL



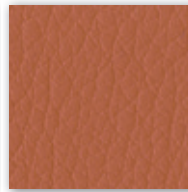
C 40 F



C 41 F



C 42 F



C 43 F



C 44 F



C 45 F



C 46 F



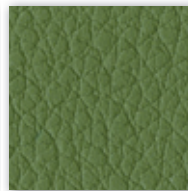
C 47 F



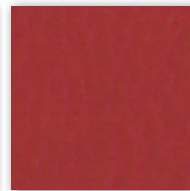
C 48 F



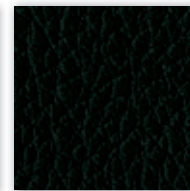
C 49 F



C 50 F



C 51 F

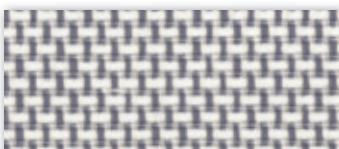


C 52 F

## Solo per modello / Only for model KEY LINE

Rete-Mesh-Resille-Membran-Red  
70% Polyester - 30% Polyamid  
Flammability: EN 1021:2014 part 1 (cigarette test)  
(Martindale 170.000)

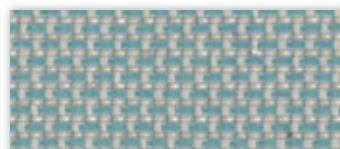
4902  
SHRINX



B BEIGE



G GRIGIO/GREY



V VERDE/GREEN



N NERO/BLACK

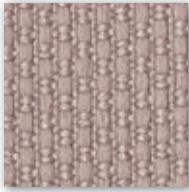
# C

## Categoria Category

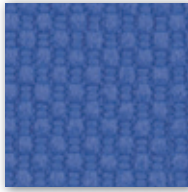
Tessuto altamente ignifugo  
Certificato Classe 1 Ministero dell'Interno  
Fireproof fabric - Tissu non feu  
Brandfester Bezug - Tela ignifuga  
100% Poliestere Trevira CS  
(Martindale 70.000)



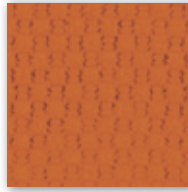
C 381



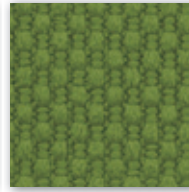
C 38 T



C 383



C 380



C 385



C 38 L



C 38 H



C 382



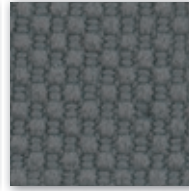
C 386



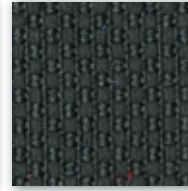
C 387



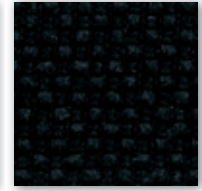
C-38



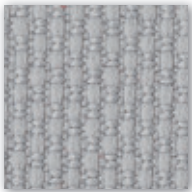
C 384



C 38 A



C 388



C 38 G



C 38 M

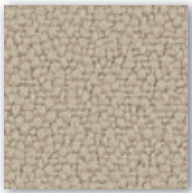


C 38 P

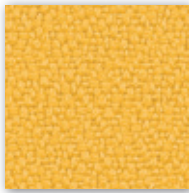
# C

## Categoria Category

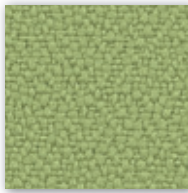
Tessuto altamente ignifugo  
Certificato Classe 1 Ministero dell'Interno  
Fireproof fabric - Tissu non feu  
Brandfester Bezug - Tela ignifuga  
100% Xtreme FR®  
(Martindale 100.000)



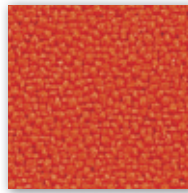
C 335



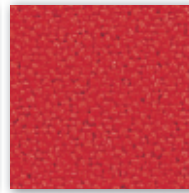
C 336



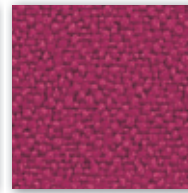
C 332



C 334



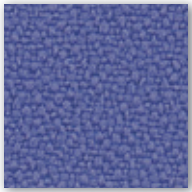
C 329



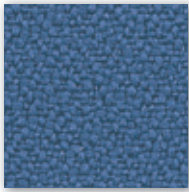
C 337



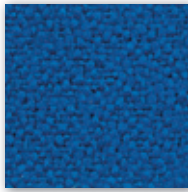
C 327 (Dark brown)



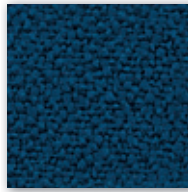
C 339



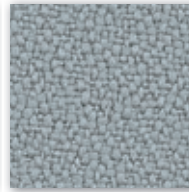
C 325



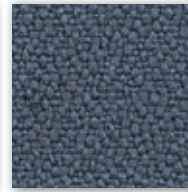
C 326



C 330



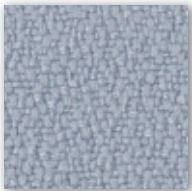
C 331



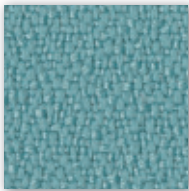
C 324



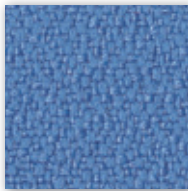
C 328



C 349



C 333

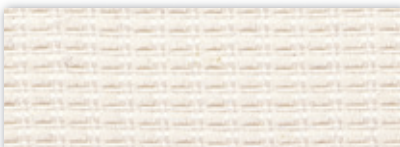


C 338

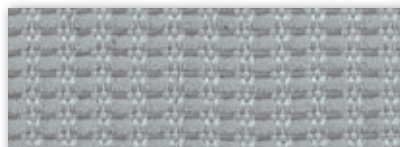
# D

## Categoria Category

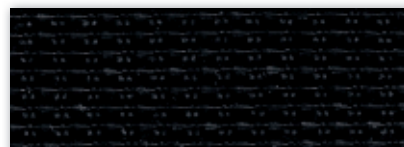
Rete - Mesh - Resille - Membran - Red  
64% PL - 36% PA - Martindale 100,000



D 218



D 221

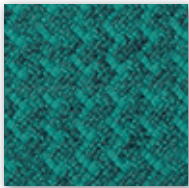


D 222

# D

## Categoria Category

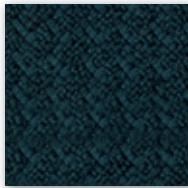
Post consumer recycled polyester 98%  
Polyester 2%  
Flammability EN 1021 1&2  
BS 5852 0&1 · CA TB 117-2013  
(Martindale 100.000)



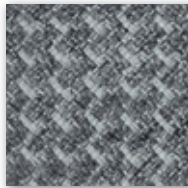
D 51B



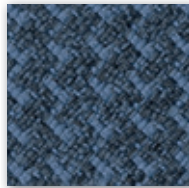
D 52B



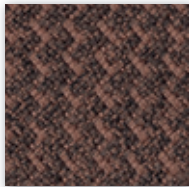
D 53B



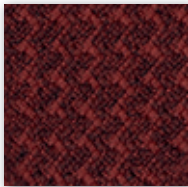
D 54B



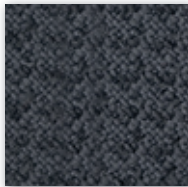
D 55B



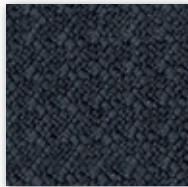
D 56B



D 57B



D 58B



D 59B

# D

## Categoria Category

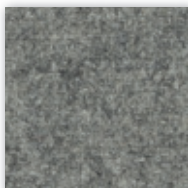
Resistenza alla fiamma - Fire resistance  
Certificato Classe 1 IM EN 1021 Part. 1-2  
75% Lana - 25% Poliammide / 75% Wool - 25% Polyamide  
(Martindale 100.000)



D 501



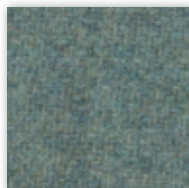
D 502



D 503



D 504



D 505



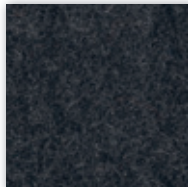
D 506



D 507



D 508



D 509

# D

## Categoria Category

Resistenza alla fiamma - Fire resistance  
UNI 9177 CL. 1 - UNI 9175 CL. 1IM - EN 1021-2  
100% PES  
(Martindale 60.000)



D 450



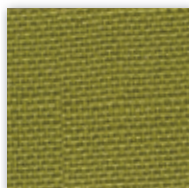
D 451



D 452



D 453



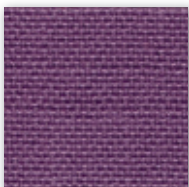
D 454



D 455



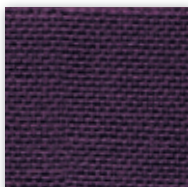
D 456



D 457



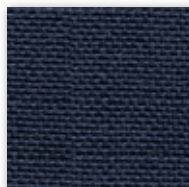
D 458



D 459



D 460



D 461



D 462

# D

## Categoria Category

Trattamento antimicrobico - Antimicrobial treatment  
 Impermeabilità-Waterproof  
 Resistenza fiamma-Fire resistance  
 UNI 9175/87 CL.1IM - EN 1021 BS 5852  
 63% Poliuretano / Polyurethane - 29% Cotone - Cotton 8% PES  
 IMO A. 652  
 (Martindale 150.000)



D 420



D 426



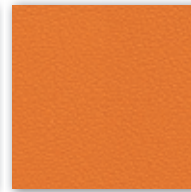
D 430



D 427



D 431



D 421



D 423



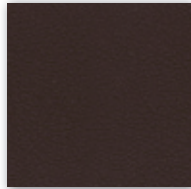
D 432



D 422



D 425



D 428 (Dark brown)



D 424



D 429

# D

## Categoria Category

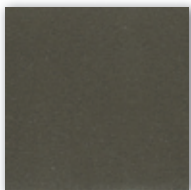
Trattamento antimicrobico - Antimicrobial treatment  
 Impermeabilità-Waterproof  
 Resistenza fiamma-Fire resistance  
 UNI 9175/87 CL.1IM - EN 1021 BS 5852  
 63% Poliuretano / Polyurethane - 29% Cotone - Cotton 8% PES  
 IMO A. 652  
 (Martindale 150.000)



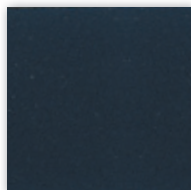
D 470



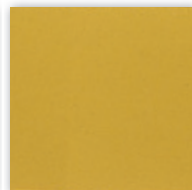
D 471



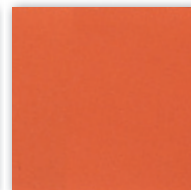
D 472



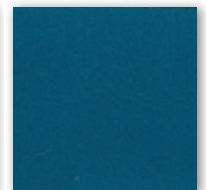
D 473



D 474



D 475



D 476



D 477



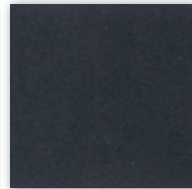
D 478



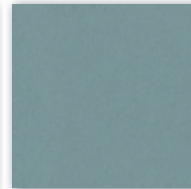
D 479



D 480 (Dark brown)



D 481



D 482

# P

## Categoria Category

Vera pelle - Genuine leather  
 Cuir - Leder - Piel auténtica  
 A richiesta disponibili altri colori.  
 By request any other colours available.



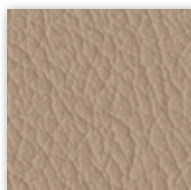
P 901



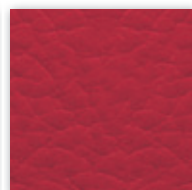
P 915



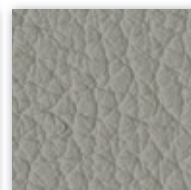
P 916



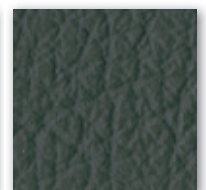
P 917



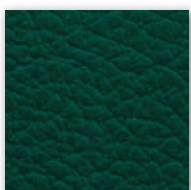
P 909



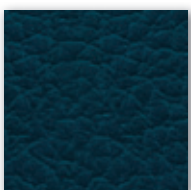
P 905



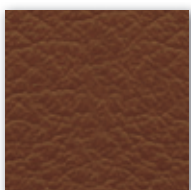
P 911



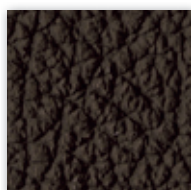
P 910



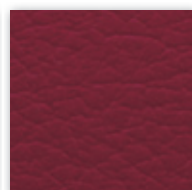
P 912



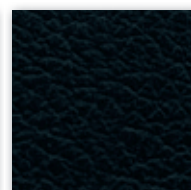
P 908



P 902 (Dark brown)



P 914



P 903

# D

## Categoria Category

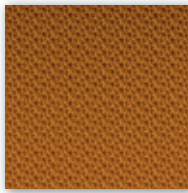
Tessuto ignifugo - Fireproof fabric - Tissu non feu - Brandfester Bezug - Tela ignifuga  
 Classe 1IM - DIN 4102 B2 - NF P 92-503/M2  
 100% Vinyl-compound - 100% Polyester Ultra Hi-Loft™ Backing  
 PERMABLOK® - SILVERGUARD® - Waterproof  
 (Martindale > 100.000)



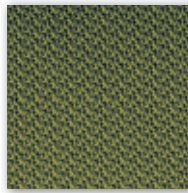
D 801



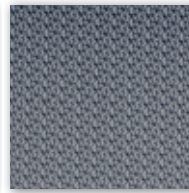
D 802



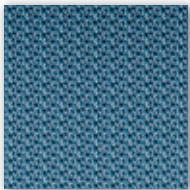
D 803



D 804



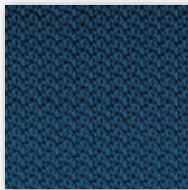
D 805



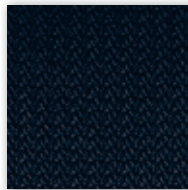
D 806



D 807



D 808

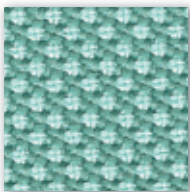


D 809

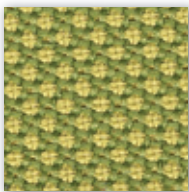
# D

## Categoria Category

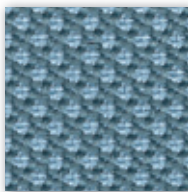
Material: 100% post consumer recycled polyester  
 Flammability: EN 1021 1&2 · BS 5852 0&1 Classe 1 · CA TB 117-2013.  
 Will also pass other flammability standards.  
 Flame retardant performance is dependent upon the foam used.  
 Abrasion resistance: rubs · EN ISO 12947-2 (Martindale 100.000)



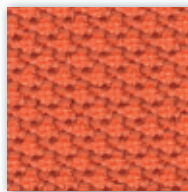
D 40R



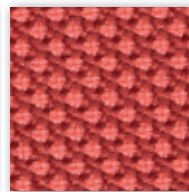
D 41R



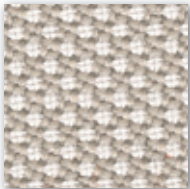
D 42R



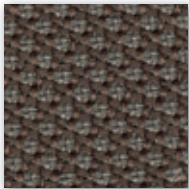
D 43R



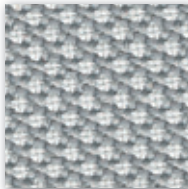
D 44R



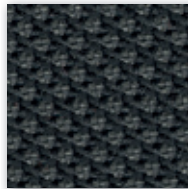
D 45R



D 46R



D 47R



D 48R

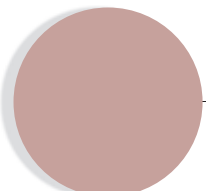
# KLIA

## COLORI POLIPROPILENE RINFORZATO FIBRA VETRO FIBERGLASS-REINFORCED POLYPROPYLENE COLORS



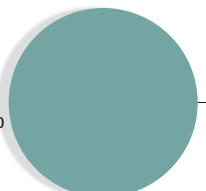
### C

Crema  
 Cream  
 Crème  
 Creme  
 Crema



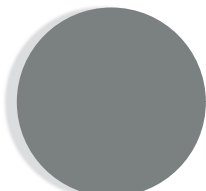
### A

Rosa antico  
 Old rose  
 Vieux rose  
 Altrosa  
 Rosa antiguo



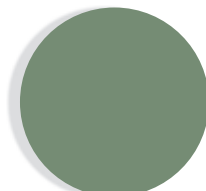
### P

Turchese  
 Turquoise  
 Turquoise  
 Türkis  
 Turquesa



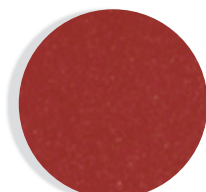
### G

Grigio  
 Grey  
 Gris  
 Grau  
 Gris



### V

Verde  
 Green  
 Vert  
 Grün  
 Verde



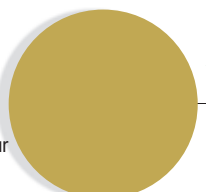
### R

Rosso  
 Red  
 Rouge  
 Rot  
 Rojo



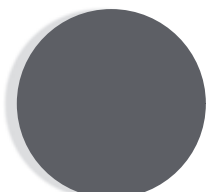
### T

Tortora  
 Dove-colour  
 Tourterelle  
 Taube  
 Arena



### Y

Giallo  
 Yellow  
 Jaune  
 Gelb  
 Amarillo

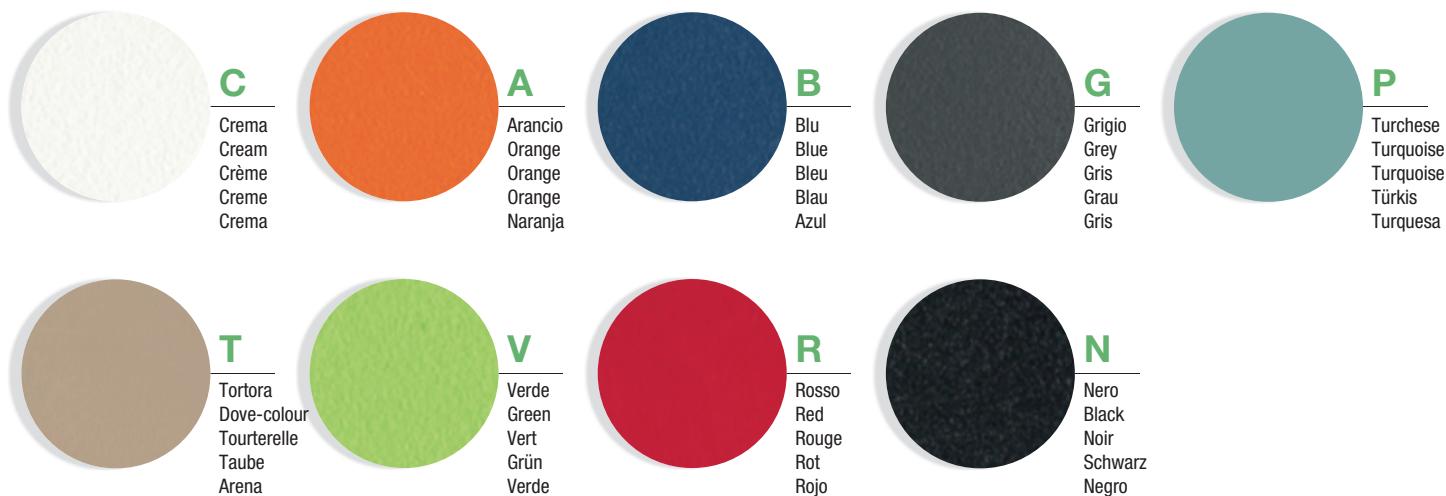


### S

Grigio ardesia  
 Slate grey  
 Gris ardoise  
 Schiefergrau  
 Gris pizarra

# KICCA KALEA

COLORI POLIPROPILENE  
POLYPROPYLENE COLOURS



# KICCA ONE

COLORI POLIPROPILENE RINFORZATO FIBRA VETRO  
FIBERGLASS-REINFORCED POLYPROPYLENE COLORS



# KRIZIA

COLORI POLIPROPILENE  
POLYPROPYLENE COLOURS

# KENSHO KAPİO

COLORI PIANI-BASI  
TOPS-BASES COLOURS

