

# NATURAL ZEBRA POP

Design Centro Stile Scab



2806 FW T5 27



2806 FS T3 25

Scocca imbottita con anima in policarbonato antishock.  
Telaio in faggio naturale, sbiancato o tinto wengé.  
Perfetta sia per l'uso domestico che in ambienti contract.

*Upholstered main body with antishock polycarbonate core.  
Natural, bleached or wenge stained beech frame.  
Perfect both for the home and for contract.*

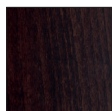
## FINITURA TELAIO FRAME FINISHING



**FN**  
faggio naturale  
natural beech wood



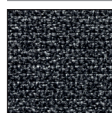
**FS**  
faggio sbiancato  
bleached beech wood



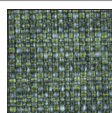
**FW**  
faggio wengé  
wenge beech wood

## TESSUTI E COLORI FABRICS AND COLOURS

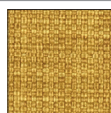
### TESSUTO / FABRIC



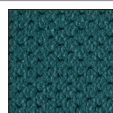
**T3 25**  
grigio classico  
classic grey



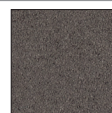
**T5 26**  
verde giada  
jade green



**T5 27**  
zafferano  
saffron



**M2 09**  
verde pavone  
peacock green



**M1 05**  
visone  
mink brown



**T4 52**  
arancio  
orange

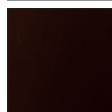


**T4 53**  
verde acido  
lime green



**T4 55**  
nero  
black

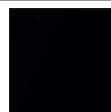
### SIMILPELLE / SIMIL-LEATHER



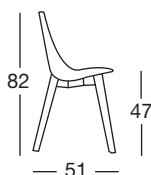
**EP 73**  
moka  
moka



**EP 74**  
bianco  
white



**EP 75**  
nero  
black



Art. 2806

Imballo Packing	2 pezzi - 2 colli 2 pieces - packages
Peso unitario Unit weight	Kg 6,500

**CATAS**

Conforme EN 15373:2007  
Compliant with EN 15373:2007

made in Italy

**SCAB DESIGN**  
since 1957

Sede/Headquarters: 25030 Coccaglio (BS) Italy - Via G. Monauni, 12  
Divisione Commerciale Italia: Tel. 0307718.755 - italia@scab.it  
Export Department: Phone +390307718.715 - export@scabitaly.com  
[www.scabdesign.it](http://www.scabdesign.it)