

# IGLOO

Design Mark Robson con Luisa Battaglia



Poltrona in policarbonato.  
Disponibile nella versione bianco pieno, nero pieno, trasparente, trasparente fumé.  
Impilabile.  
Per uso interno/esterno.

*Polycarbonate armchair.  
Available in glossy white, glossy black, transparent or translucent smoked colours.  
Stackable.  
For indoor/outdoor use.*

Made of Makrolon® by



## COLORI COLOURS



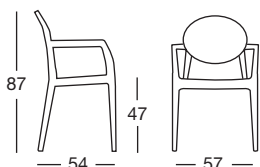
**100**  
trasparente  
transparent

**183**  
trasparente  
fumé  
translucent  
smoked



**310**  
bianco pieno  
glossy white

**380**  
nero pieno  
glossy black



Art. 2355

Imballo: 4 pezzi  
Packing: 4 pieces

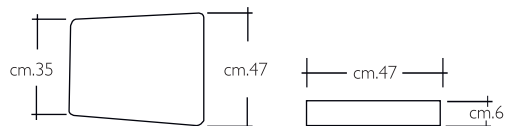
Peso unitario Kg 5,000  
Unit weight

Misure imballo 73,5x59x107 cm  
Packing sizes

CATAS

Conforme EN 15373: 2007  
According to EN 15373: 2007

## CUSCINO PER IGLOO CUSHION FOR IGLOO



Art. 1505

Cuscino tessile imbottito da fissare con strisce in velcro.  
Stuffed textile cushion fixable with velcro.

Imballo: 2 pezzi  
Packing: 2 pieces

Peso unitario Kg 0,500  
Unit weight

Misure imballo 51x47x7,5 cm  
Packing sizes

## TESSUTI E COLORI FABRICS AND COLOURS

### VELLUTINO / VELVET



**01** Cammello  
Camel



**02** Arancio  
Orange



**03** Magenta  
Magenta



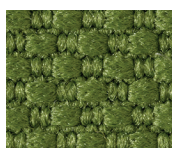
### TRAMATO / WOVEN



**11** Sabbia  
Sand



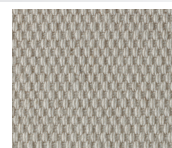
**12** Arancio  
Orange



**13** Verde cedro  
Lime green



### COTONE PANAMA / COTTON PANAMA



**21** Ecrù  
Ecru



made in Italy

Sede/Headquarters: 25030 Coccaglio (BS) Italy - Via G. Monauni, 12  
Divisione Commerciale Italia: Tel. 0307718.760/765/770 - Fax 0307718.777  
www.scab.it - e-mail: italia@scab.it  
Export Department: Phone +390307718.720/725/726 - Fax +390307718.700  
www.scabitaly.com - e-mail: export@scabitaly.com