

sitia™

— human
office chairs
selection



— need *more* for your project?

Sitia concept is “the human contract”: a new way of conceiving contract and professional environments to respond to the desire for “human” in a contemporary world. With Sitia furnishings, work and hospitality spaces become versatile, functional and integrated, ready to give to those who are living in them a home atmosphere and a more human dimension.

Il concept Sitia è “the human contract”: un nuovo modo di concepire gli ambienti contract e professionali per rispondere alla voglia di “human” della contemporaneità. Con gli arredi Sitia, gli spazi lavorativi e di ospitalità diventano luoghi versatili, funzionali e integrati, pronti a donare a chi li vive un’atmosfera domestica e una dimensione più umana.

discover sitia’s *main catalogue!*

Scan the code >



2

tables, coffee tables,
sofas, pouffes, chairs,
compléments by sitia



— the human *office chairs*

S^o

OFFICE CHAIRS

Darwin	16
Black or White	22
Beauté	26
Eclipse	30
Havana	34
Idesia	42
Sabal	46
Tempo	50
Major	56
Swingo	64

MATERIALS & FINISHINGS	109
------------------------	-----

— humanly made in Sitia

1. About Sitia	68
2. Focus: home office	72
3. Tailor made in Italy	77
4. Projects	81







Beauté 26



Regolo, Darwin 16

S.





S²



Swingo 64



Eclipse 30, Kesi



Pergy, Trimundo, Beauté 26

Eclipse 30





Nebu, Black or White 22

sedie da ufficio

— *office
chairs*

— Darwin

Design by Pergentino Battocchio
2015

Comfort, design
and premium finishings.
Darwin's office chairs
collection is made
up of a structure that
anatomically supports
the body and favours
relaxation, promoting
a work concept which
aims at people's wellness.

Comfort, design e finiture premium. La collezione di poltrone e sedie da ufficio Darwin è formata da una struttura che sostiene anatomicamente il corpo e ne favorisce il relax, promuovendo un concetto di lavoro che punta al benessere delle persone.





Darwin, Side

OFFICE CHAIRS



Upholstered executive armchair, high backrest, 5-star base, swivel, updown

Poltrona direzionale imbottita, schienale alto, base a 5 razze, girevole, updown

Sizes: W 700 x D 735 x H 1275/1386 mm
S H 484/595 mm
Code: DARWA S



Upholstered executive armchair, mid backrest, 5-star base, swivel, updown

Poltrona semi-direzionale imbottita, schienale medio, base a 5 razze, girevole, updown

Sizes: W 715 x D 735 x H 1050/1160 mm
S H 505/635 mm
Code: DARWM S



Upholstered executive armchair, low backrest, 5-star base, swivel, updown

Poltrona semi-direzionale imbottita, schienale basso, base a 5 razze, girevole, updown

Sizes: W 700 x D 690 x H 795/924 mm
S H 431/560 mm
Code: DARWB S



Upholstered armchair, low backrest, 4-star base, swivel, self return

Poltrona imbottita, schienale basso, base a 4 razze, girevole, auto allineante

Sizes: W 715 x D 690 x H 854 mm
S H 479 mm
Code: DARWV E



Upholstered visitor armchair, 4 legged base, swivel

Poltrona visitatore imbottita, base 4 gambe, girevole

Sizes: W 690 x D 690 x H 860 mm
S H 483 mm
Code: DARWV D



Upholstered visitor armchair, steel sled base

Poltrona visitatore imbottita, base a slitta in acciaio

Sizes: W 640 x D 625 x H 810 mm
S H 465 mm
Code: DARWV A3



Darwin





Dapper, Darwin, Klera

— *Black or White*

Minimalist and thin, the Black or White office chair develops considering a series of structural elements built around a technological core, which permits the anatomical support of the body, supporting its correct posture during work. This chair distinguishes itself for the various technical characteristics, like adjustable headrest with cervical support, adjustable lumbar support, seat angle and depth adjustment, as well as adjustable armrests.

Minimalista e snella, la sedia da ufficio Black or White si sviluppa grazie ad una serie di elementi strutturali costruiti attorno ad un'anima tecnologica che consente di sorreggere anatomicamente il corpo, supportandone la postura corretta durante il lavoro. Questa sedia si distingue in modo particolare per le varie caratteristiche tecniche, come il poggiatesta mobile con supporto cervicale, supporto lombare regolabile, regolazione dell'angolo e della profondità di seduta, braccioli regolabili.





Scan the code
to watch the video



OFFICE CHAIRS



**Upholstered executive armchair,
high backrest, 5-star base, swivel
updown**

**Poltrona direzionale imbottita,
schienale alto, base a 5 razze,
girevole, updown**

Sizes: W 695 x D 685 x
H 1210/1338 mm
S H 484/612 mm
Code: BOWAI S



**Upholstered executive armchair,
mid backrest, 5-star base, swivel
updown**

**Poltrona semi-direzionale imbottita,
schienale medio, base a 5 razze,
girevole, updown**

Sizes: W 715 x D 715 x
H 990/1120 mm
S H 490/620 mm
Code: BOWBI S





The mark of responsible forestry

available FSC® certified on request
disponibile certificato FSC® su richiesta



— *Beauté*

Design by Pergentino Battocchio & Fiorenzo Dorigo
2003

Concrete and structural comfort characterize the *Beauté* chair, created for an elegant and welcoming contract space. Its anatomically contoured quilted backrest is the design element which enhances the craftsmanship's high quality without compromising strength and practicality of use.

Un comfort concreto e strutturale distingue la sedia *Beauté*, creata per un contract elegante ed accogliente. Il suo schienale trapuntato, sagomato anatomicamente, è l'elemento stilistico della seduta che esalta l'alta qualità della lavorazione artigianale, senza compromettere robustezza e praticità d'uso.





OFFICE CHAIRS



**Upholstered executive armchair,
high backrest, 5-star base, swivel,
updown**

**Poltrona direzionale imbottita,
schienale alto, base a 5 razze,
girevole, updown**

Sizes: W 735 x D 680 x
H 1120/1228 mm
S H 435/542 mm
Code: BEA-A S



**Upholstered executive armchair,
mid backrest, 5-star base, swivel,
updown**

**Poltrona semi-direzionale imbottita,
schienale medio, base a 5 razze,
girevole, updown**

Sizes: W 715 x D 715 x
H 910/1090 mm
S H 455/585 mm
Code: BEA-B S





The mark of responsible forestry

available FSC® certified on request
disponibile certificato FSC® su richiesta



— *Eclipse*

Design by Fiorenzo Dorigo
2002

Efficiency and aesthetic linearity are key features of the Eclipse chair, conceived for more informal professional moments. Characterized by a deeply ergonomic design, Eclipse is specifically designed to support the user while working.

Efficienza e linearità estetica sono i connotati di Eclipse, la sedia pensata per le situazioni professionali più informali. Caratterizzata da un design fortemente ergonomico, la collezione è stata studiata appositamente per sostenere e supportare la persona nello spazio lavorativo.





OFFICE CHAIRS



Upholstered task chair, high backrest, 5-star base, swivel, updown

Sedia operativa imbottita, schienale alto, base a 5 razze, girevole, updown

Sizes: W 735 x D 700 x
H 980/1110 mm
S H 430/560 mm
Code: ECLAQ V/X



Task chair, mesh mid backrest 5-star base, swivel, updown

Sedia operativa, schienale medio in rete, base a 5 razze, girevole, updown

Sizes: W 695 x D 695 x
H 910/1090 mm
S H 480/590 mm
Code: ECLR* V/X





— Havana

Design by Pergentino Battocchio
2004

Havana chairs represent the perfect union between order and beauty in working environments. A collection which grants comfort and quality and, at the same time, timeless beauty. Total customization: unlimited combinations of backrests, armrests and bases, the Havana collection can be easily placed in any location and allows to furnish all spaces with a hierarchical range of products.

Le sedie Havana rappresentano il connubio perfetto tra ordine ed estetica negli ambienti lavorativi. Una collezione che garantisce comfort e qualità e, al contempo, estetica senza tempo. Personalizzazione totale: con le infinite combinazioni tra schienale, braccioli e gambe, la collezione Havana si colloca facilmente in ogni spazio e permette di arredare tutti gli ambienti con una gamma gerarchica completa.





OFFICE CHAIRS



Upholstered executive armchair, high backrest, 5-star base, swivel, updown

Poltrona direzionale imbottita, schienale alto, base a 5 razze, girevole, updown

Sizes: W 715 x D 715 x
H 1235/1360 mm
S H 505/630 mm
Code: HAVAI S



Upholstered executive armchair, mid backrest, 5-star base, swivel, updown

Poltrona semi-direzionale imbottita, schienale medio, base a 5 razze, girevole, updown

Sizes: W 715 x D 715 x
H 1125/1250 mm
S H 505/630 mm
Code: HAVBI S



Upholstered visitor armchair, steel sled base

Poltrona visitatore imbottita, base a slitta in acciaio

Sizes: W 625 x D 620 x
H 1045 mm
S H 460 mm
Code: HAVVI T



The mark of responsible forestry

available FSC® certified on request
disponibile certificato FSC® su richiesta



Havana , Tondo

OFFICE CHAIRS



Executive armchair, high backrest in mesh and upholstered seat, 5-star base, swivel, updown

Poltrona direzionale, schienale alto in rete e sedile imbottito, base a 5 razze, girevole, updown

Sizes: W 715 x D 715 x
H 1235/1360 mm
S H 505/630 mm
Code: HAVAM* S



Executive armchair, mid backrest in mesh and upholstered seat, 5-star base, swivel, updown

Poltrona semi-direzionale, schienale medio in rete e sedile imbottito, base a 5 razze, girevole, updown

Sizes: W 715 x D 715 x
H 1125/1250 mm
S H 505/630 mm
Code: HAVBM* S



Visitor armchair, backrest in mesh and upholstered seat, steel sled base

Poltrona visitatore, schienale in rete e sedile imbottito, base a slitta in acciaio

Sizes: W 625 x D 620 x
H 1045 mm
S H 460 mm
Code: HAVVM* T



Executive armchair, high backrest and seat in mesh, 5-star base, swivel, updown

Poltrona direzionale, schienale alto e sedile in rete, base a 5 razze, girevole, updown

Sizes: W 715 x D 715 x
H 1235/1360 mm
S H 505/630 mm
Code: HAVAR S



Executive armchair, mid backrest and seat in mesh, 5-star base, swivel, updown

Poltrona semi-direzionale, schienale medio e sedile in rete, base a 5 razze, girevole, updown

Sizes: W 715 x D 715 x
H 1125/1250 mm
S H 505/630 mm
Code: HAVBR S



Visitor armchair, backrest and seat in mesh, steel sled base

Poltrona visitatore schienale medio e sedile in rete, base a slitta in acciaio

Sizes: W 625 x D 620 x
H 1045 mm
S H 460 mm
Code: HAVVR T



The mark of responsible forestry

available FSC® certified on request
disponibile certificato FSC® su richiesta



Havana

OFFICE CHAIRS



Executive armchair, low backrest with soft pad and mesh support, 5-star base, swivel, updown

Poltrona semi-direzionale, schienale basso con soft pad e supporto in rete, base a 5 razze, girevole, updown

Sizes: W 715 x D 715 x H 980/1100 mm
S H 505/630 mm
Code: HAV1P* S



Visitor armchair, low backrest with soft pad and mesh support, 4-star base, swivel, self return

Poltrona visitatore, schienale basso con soft pad e supporto in rete, base a 4 razze, girevole, auto allineante

Sizes: W 631 x D 630 x H 940 mm
S H 425 mm
Code: HAV1P* X



Executive armchair, low backrest in mesh and upholstered seat, 5-star base, swivel, updown

Poltrona semi-direzionale, schienale basso in rete e sedile imbottito base a 5 razze, girevole, updown

Sizes: W 682 x D 630 x H 930/1058 mm
S H 432/558 mm
Code: HAV1M* S



Visitor armchair, low backrest in mesh and upholstered seat, 4-star base, swivel, self return

Poltrona visitatore, schienale basso in rete e sedile imbottito, base a 4 razze, girevole, auto allineante

Sizes: W 630 x D 630 x H 970 mm
S H 460 mm
Code: HAV1M* X



Executive armchair, low backrest and seat in mesh, 5-star base, swivel, updown

Poltrona semi-direzionale, schienale basso e sedile in rete, base a 5 razze, girevole, updown

Sizes: W 715 x D 715 x H 980/1100 mm
S H 505/630 mm
Code: HAV1R S



Visitor armchair, low backrest and seat in mesh, 4-star base, swivel, self return

Poltrona visitatore, schienale basso e sedile in rete, base a 4 razze, girevole, auto allineante

Sizes: W 630 x D 630 x H 970 mm
S H 460 mm
Code: HAV1R X



The mark of responsible forestry

available FSC® certified on request
disponibile certificato FSC® su richiesta

— *Idesia*

Design by Pergentino Battocchio & Fiorenzo Dorigo
2003

The Idesia chair combines technique and aesthetics. The arch, which supports and envelops the seat, creates a sophisticated curve, an element of incomparable class and high design value, functional to the comfortable armrests.

Idesia è una sedia connubio tra tecnicismo ed estetica. L'arco che sostiene e avvolge la seduta produce una sofisticata curva, elemento di impareggiabile classe ed alto valore progettuale, funzionale ai comodi braccioli.





OFFICE CHAIRS



**Upholstered executive armchair,
high backrest, 5-star base, swivel,
updown, fixed armrests**

**Poltrona direzionale imbottita,
schienale alto, base a 5 razze,
girevole, updown, braccioli fissi**

Sizes: W 715 x D 730 x
H 1225/1343 mm
S H 487/605 mm
Code: IDE-A A



**Upholstered executive armchair,
mid backrest, 5-star base, swivel,
updown, fixed armrests**

**Poltrona semi-direzionale imbottita,
schienale medio, base a 5 razze,
girevole, updown, braccioli fissi**

Sizes: W 695 x D 695 x
H 1105/1223 mm
S H 487/605 mm
Code: IDE-B A





The mark of responsible forestry

available FSC® certified on request
disponibile certificato FSC® su richiesta



— *Sabal*

Design by Pergentino Battocchio & Fiorenzo Dorigo
2003

Sabal is a chair designed to furnish all the professional working areas, from the office to the meeting or waiting room. It combines both aesthetics and technical elements for a unique comfort and design.

Pensata per arredare l'ambiente professionale in tutte le sue aree, dall'ufficio alla meeting room o in sala d'attesa, Sabal è una sedia che unisce elementi efficaci, sia esteticamente che tecnicamente, per comfort e design unici.





OFFICE CHAIRS



**Upholstered executive armchair,
high backrest, 5-star base, swivel,
updown, fixed armrests**

**Poltrona direzionale imbottita,
schienale alto, base a 5 razze,
girevole, updown, braccioli fissi**

Sizes: W 715 x D 730 x
H 1190/1320 mm
S H 490/620 mm
Code: SAB-A S



**Upholstered executive armchair
mid backrest, 5-star base, swivel,
updown, fixed armrests**

**Poltrona semi-direzionale imbottita,
schienale medio, base a 5 razze,
girevole, updown, braccioli fissi**

Sizes: W 715 x D 730 x
H 860/970 mm
S H 490/620 mm
Code: SAB-B S





The mark of responsible forestry

available FSC® certified on request
disponibile certificato FSC® su richiesta



— *Tempo*

Design by Pergentino Battocchio
2012

With its neat and refined aesthetics, Tempo is a chair suitable for all office environments, conference rooms and executive areas, able to transmit grace and spontaneous elegance.

Dall'estetica pulita e raffinata, Tempo è una sedia che si adatta a tutti gli ambienti dell'ufficio, sala conferenza, studio, aree direzionali, lasciando trasparire dalla sua linearità la volontà di creare un elemento d'arredo in grado di trasmettere grazia e spontanea eleganza.





OFFICE CHAIRS



Upholstered executive armchair, high backrest, 5-star base, swivel, updown

Poltrona direzionale imbottita, schienale alto, base a 5 razze, girevole, updown

Sizes: W 688 x D 715 x H 1240/1355 mm
S H 466/581 mm
Code: TEMP A



Upholstered executive armchair, mid backrest, 5-star base, swivel, updown

Poltrona semi-direzionale imbottita, schienale medio, base a 5 razze, girevole, updown

Sizes: W 688 x D 715 x H 980/1005 mm
S H 466/581 mm
Code: TEMPM A



Upholstered executive armchair, low backrest, 5-star base, swivel, updown

Poltrona semi-direzionale imbottita, schienale basso, base a 5 razze, girevole, updown

Sizes: W 688 x D 688 x H 930/1047 mm
S H 485/602 mm
Code: TEMPB A



Upholstered executive armchair, low backrest, 4-star base, swivel, self return

Poltrona semi-direzionale imbottita, schienale basso, base a 4 razze, girevole, auto allineante

Sizes: W 550 x D 550 x H 895 mm
S H 458 mm
Code: TEMPB X



Upholstered visitor armchair, steel sled base

Poltrona visitatore imbottita, base a slitta in acciaio

Sizes: W 555 x D 660 x H 930 mm
S H 450 mm
Code: TEMPV A/B





available FSC® certified on request
disponibile certificato FSC® su richiesta

The mark of
responsible forestry



Tempo





— *Major*

Design by Fiorenzo Dorigo
2005

A perfect combination between backrest and seat, which creates an unusual furnishing element but perfectly balanced.

The Major collection consists of totally customizable and adaptable chairs and stools, able to change aspect thanks to the varieties of the different elements available. The simple and comfortable design start off with chairs with graphic lines but at the same time soft. It is designed for contract and domestic environments.

Un incastro perfetto tra schienale e seduta, che genera un elemento d'arredo inconsueto e allo stesso tempo perfettamente bilanciato.

La collezione Major è costituita da sedie e sgabelli totalmente customizzabili, camaleontici e in grado di cambiare tono grazie ai diversi elementi su cui è possibile intervenire. Il design, semplice e comodo, dà vita a sedute dalle linee grafiche ma al contempo morbide. Pensata per il contract e per gli ambienti domestici.





LOW BACKREST CHAIRS



Fully upholstered armchair or with wooden rear backrest, low backrest, 5-star base on castors, swivel, updown

Poltroncina completamente imbottita o con retro schienale in legno, schienale basso, base a 5 razze su ruote, girevole, updown

Sizes: W 715 x D 715 x H 693/822 mm
S H 435/565 mm
Code: MAJB* Y



Fully upholstered armchair or with wooden rear backrest, low backrest, 4-star base, swivel

Poltroncina completamente imbottita o con retro schienale in legno, schienale basso, base a 4 razze, girevole

Sizes: W 545 x D 700,5 x H 473 mm
S H 473 mm
Code: MAJB* Z



Fully upholstered armchair or with wooden rear backrest, low backrest, 4-star base, swivel, self return

Poltroncina completamente imbottita o con retro schienale in legno, schienale basso, base a 4 razze, girevole, auto allineante

Sizes: W 545 x D 580 x H 730 mm
S H 460 mm
Code: MAJB* X



Fully upholstered armchair or with wooden rear backrest, low backrest, 4 legged steel frame

Poltroncina completamente imbottita o con retro schienale in legno, schienale basso, telaio 4 gambe in acciaio

Sizes: W 545 x D 620 x H 640 mm
S H 460 mm
Code: MAJB* B



Fully upholstered armchair or with wooden rear backrest, low backrest, 4 legged base, swivel

Poltroncina completamente imbottita o con retro schienale in legno, schienale basso, base 4 gambe, girevole

Sizes: W 545 x D 690,5 x H 720 mm
S H 473 mm
Code: MAJB* D



Fully upholstered armchair or with wooden rear backrest, low backrest, pyramidal base in solid walnut canaletto or olive ash, swivel

Poltroncina completamente imbottita o con retro schienale in legno, schienale basso, base piramidale in massello di noce canaletto o frassino olivato, girevole

Sizes: W 545 x D 555 x H 760 mm
S H 485 mm
Code: MAJB* W/U



**Fully upholstered armchair or with
wooden rear backrest, low backrest,
steel sled base**

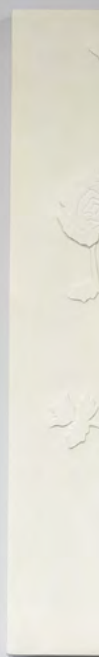
**Poltroncina completamente imbottita
o con retro schienale in legno,
schienale basso, base a slitta in
acciaio**

Sizes: W 545 x D 610 x H 710 mm
S H 475 mm
Code: MAJB* A



The mark of
responsible forestry

available FSC® certified on request
disponibile certificato FSC® su richiesta





HIGH BACKREST CHAIRS



Fully upholstered armchair or with wooden rear backrest, high backrest, 5-star base on castors, swivel, updown

Poltroncina completamente imbottita o con retro schienale in legno, schienale alto, base a 5 razze su ruote, girevole, updown

Sizes: W 715 x D 715 x H 860/990 mm
S H 435/565 mm
Code: MAJA* Y



Fully upholstered armchair or with wooden rear backrest, high backrest, 4 legged base, swivel on castors

Poltroncina completamente imbottita o con retro schienale in legno, schienale alto, base 4 gambe, girevole su ruote

Sizes: W 545 x D 700,5 x H 885mm
S H 470 mm
Code: MAJA* Z



Fully upholstered armchair or with wooden rear backrest, high backrest, 4-star base, swivel, self return

Poltroncina completamente imbottita o con retro schienale in legno, schienale alto, base a 4 razze, girevole, auto allineante

Sizes: W 545 x D 715 x H 895 mm
S H 463 mm
Code: MAJA* X



Fully upholstered armchair or with wooden rear backrest, high backrest, 4 legged steel frame

Poltroncina completamente imbottita o con retro schienale in legno, schienale alto, telaio 4 gambe in acciaio

Sizes: W 545 x D 630 x H 850 mm
S H 465 mm
Code: MAJA* B



Fully upholstered armchair or with wooden rear backrest, high backrest, 4 legged base, swivel

Poltroncina completamente imbottita o con retro schienale in legno, schienale alto, base 4 gambe, girevole

Sizes: W 545 x D 690,5 x H 885 mm
S H 468 mm
Code: MAJA* D



Fully upholstered armchair or with wooden rear backrest, high backrest, pyramidal base in solid walnut canaletto or olive ash, swivel

Poltroncina completamente imbottita o con retro schienale in legno, schienale alto, base piramidale in massello di noce canaletto o frassino olivato, girevole

Sizes: W 545 x D 580 x H 933 mm
S H 497 mm
Code: MAJA* W/U



Fully upholstered armchair or with wooden rear backrest, high backrest, steel sled base

Poltroncina completamente imbottita o con retro schienale in legno, schienale alto, base a slitta in acciaio

Sizes: W 545 x D 620 x H 850 mm
S H 480 mm
Code: MAJA* A



Fully upholstered armchair or with wooden rear backrest, high backrest, steel sled base, writing wooden tablet

Poltroncina completamente imbottita o con retro schienale in legno, schienale alto, base a slitta in acciaio, tavoletta scrittoria in legno

Sizes: W 575 x D 620 x H 850 mm
S H 480 mm
Code: MAJA* A



The mark of responsible forestry

**available FSC® certified on request
disponibile certificato FSC® su richiesta**

— *Swingo*

Design by CRS Sitia
2022

A practical swinging stool, with an informal style, designed for residential or contract use. Swingo can fit a huge variety of applications in different environments, while maintaining an original nature. Thanks to its compactness it is also perfect for the corner of the house dedicated to home working.

Un pratico sgabello oscillante, dallo stile informale, pensato per uso residenziale o contract. Swingo è in grado di adattarsi alle più svariate applicazioni in diversi segmenti, pur mantenendo un carattere originale. Grazie alla sua compattezza è anche perfetto per un angolo di casa dedicato all'home working.





STOOLS



**Dynamic stool with tilt seating,
height-adjustable and swivel seat**

**Sgabello dinamico con seduta
oscillante, regolabile in altezza e
girevole**

Sizes: Ø 400 X SH 598/860
Code: SWG A2





available FSC® certified on request
disponibile certificato FSC® su richiesta

The mark of
responsible forestry



Side, Swingo, Tondo

1 — About Sitia

The human contract:
Sitia produces extremely
adaptable and customizable
furniture, perfect for contract
and domestic spaces.
Starting from catalog products
- to which new finishes,
fabrics and colors have been
added - the brand produces
complements for sophisticated
bespoke projects according
to the requests of the partners.

The human contract:
Sitia produce arredi estremamente versatili
e customizzabili, perfetti per gli spazi contract
e domestici. Partendo dai prodotti disponibili
a catalogo - al quale sono state aggiunte nuove
finiture, tessuti e colori - il brand produce
complementi che sfociano in sofisticati progetti
bespoke, secondo le richieste dei partners.



SITIA, a specialized brand in the creation of seats and accessories for domestic and contract spaces, is solely dedicated to design and quality made in Italy. The company is nowadays inspired by the creative concept of ‘the human contract’: furniture that is able to create a comfortable environment, with a domestic atmosphere, even if they are placed in professional and work environments. In response to the contemporary evolution of interiors, Sitia has also dedicated a branch of the company to the production of products, to provide customers and architects with endless possibilities of customization: each product is fully customizable, even if in small quantities. Since 2015 the creative direction of the brand has been entrusted to the creative consultancy agency of MM Company.

SITIA, brand specializzato nella creazione di sedute e complementi per gli spazi domestici e contract, è fortemente vocato al design e alla qualità made in Italy. L'azienda è oggi ispirata al concept creativo “the human contract”: degli arredi capaci di ricreare un ambiente confortevole, dall'atmosfera domestica, anche se collocati in ambienti professionali e di lavoro. In risposta all'evoluzione contemporanea degli interiors, Sitia ha anche dedicato un ramo d'azienda alle produzioni sartoriali, per fornire ai clienti e architetti infinite possibilità di personalizzazione: ogni prodotto è interamente customizzabile, anche se in piccole quantità. Dal 2015 la direzione creativa del brand è affidata all'agenzia di consulenza creativa MM Company.





2 — *Focus:* *home office*

the ‘human contract’ enters your home

lo ‘human contract’ entra in casa tua

Domestic spaces dedicated to work and learning, in a “human” style. Sitia fits people’s needs, creating a series of furnishings that blend together to organize a comfortable work environment at home with a modern, elegant and multifunctional design. Environments used as home offices which, thanks to systems that interact flexibly with each other to create light and functional areas, perfect for the needs of contemporary living.

Spazi domestici dedicati al lavoro e all’apprendimento, in stile “human”. Sitia si adatta alle esigenze delle persone dando vita ad una serie di arredi che interagiscono per organizzare in casa un ambiente di lavoro confortevole e dal design moderno, elegante e multifunzionale. Ambienti adibiti a studi domestici che, grazie a sistemi che dialogano tra loro in modo flessibile, creano aree leggere e funzionali, perfette per le esigenze dell’abitare contemporaneo.









3 — Tailor made in Italy

From initial conception to production, Sitia makes entirely handmade products, made in Italy.

Dall'ideazione fino alla realizzazione, Sitia produce ogni articolo a mano e in Italia.

Guided by “maestro” Pergentino Battocchio, who boasts more than 50 years experience in the production of chairs, Sitia has an internal production laboratory that allows total customization in its creations, changing fabrics, sizes, materials and finishes.

Guidata dal maestro Pergentino Battocchio, che vanta un’esperienza di oltre 50 anni nella produzione di sedute, l’azienda ha un laboratorio produttivo interno, che gli permette di customizzare totalmente le proprie realizzazioni cambiando tessuti, dimensioni, materiali e finiture.

‘
*Each product
can be personalized*
,

Technological innovation, technical skills, quality and a strong sense of aesthetics affirm the authenticity of Sitia creations which act as an ambassador of Italian design in the world, a design characterized by all internationally recognized features.

Innovazione tecnologica, abilità tecnica, qualità dei materiali e forte senso estetico, affermano l’autenticità delle creazioni Sitia che fa da ambasciatrice nel mondo del design italiano, portando con sé tutte queste caratteristiche internazionalmente riconosciute.







4 — Projects: Sitia for you

Deep sartorial knowledge, avant-garde technologies, certified methodologies and innovative structural research make Sitia a brand in harmony with architectural studios and interior designers from all over the world.

La profonda conoscenza sartoriale, le tecnologie d'avanguardia utilizzate, le metodologie certificate e le innovative ricerche strutturali, fanno di Sitia un brand in sintonia con le esigenze degli studi di architettura e arredatori di tutto il mondo.



An available and reliable partner that senses their needs and turn them into real products for contract environments, offices, hotels, restaurants and public or residential spaces. Sitia is a partner of designers, indeed operates an internal interior design team that studies in project details to find out customized solutions even from a technical point of view.

Un partner disponibile e affidabile che capta le loro necessità, trasformandole in prodotti veri e propri per gli ambienti contract, uffici, hotelerie, ristoranti e spazi pubblici o residenziali. Partner dei progettisti, Sitia si avvale infatti di un design team interno che studia nel dettaglio i progetti per trovare soluzioni customizzate, anche dal punto di vista tecnico.



Tempo



Chantal

This allows customers to ask for changes on standard collection items or to evaluate together with Sitia's design team the creation of tailor-made articles.

Questo permette ai clienti di richiedere modifiche agli arredi presenti a catalogo, o valutare assieme all'azienda la creazione di articoli completamente su misura





Black or White





Black or White









Pergy





Eclipse, pergy



Black or White, Klera



Darwin



Major









Tempo





Klera





Chantal, Darwin







Chantal, Eclipse



materiali
& finiture

— *materials*
& *finishings*

Jet by Fidivi
Made in Italy

Composition

100% polyester (Trevira Cs)

Length

1,40 m

Weight

260 gr/m² ±5%

Abrasion test-Martindale

UNI EN ISO 12947-2 - 65.000 rubs ±10%

Pilling - Martindale Method

ISO 12945-2 degree 4-5, 5

Rubbing Fastness - Humid

EN ISO 105X12 4/5 ± ½

Xenotest

EN ISO 105 B02 degree 5-8, 6

Colour fastness to rubbing

EN ISO 105-X12 degree 4-5, 4/5

Fire resistance

UNI 9174 - 8456 Class C1

UNI 9175 Class 1 IM

DIN 4102 Class B1

NF 92501-7 Class M1

NF D 60013 Class AM18

EN 1021-1 & 2

BS Crib 5

BS 7176 Class Medium Hazard

EN 13773 Class 1

OENORM 3800-1 Class B1,Q1,TR1

California TB117

USA NFPA 701

USA NFPA 260

IMO Part 8 Upholstery

Cleaning and maintenance

Vacuum regularly.

Wipe clean with a damp cloth.

Jet by Fidivi
Made in Italy

Composizione

100% poliestere (Trevira Cs)

Altezza

1,40 m

Peso

260 gr/m² ±5%

Resistenza all'abrasione Martindale

UNI EN ISO 12947-2 - 65.000 cicli ±10%

Pilling - Metodo Martindale

ISO 12945-2 grado 4-5, 5

Resistenza allo sfregamento a umido

EN ISO 105X12 4/5 ± ½

Solidità del colore alla luce artificiale

EN ISO 105 B02 grado 5-8, 6

Solidità del colore allo sfregamento

EN ISO 105-X12 grado 4-5, 4/5

Resistenza al fuoco

UNI 9174 - 8456 Class C1

UNI 9175 Class 1 IM

DIN 4102 Class B1

NF 92501-7 Class M1

NF D 60013 Class AM18

EN 1021-1 & 2

BS Crib 5

BS 7176 Class Medium Hazard

EN 13773 Class 1

OENORM 3800-1 Class B1,Q1,TR1

California TB117

USA NFPA 701

USA NFPA 260

IMO Part 8 Upholstery

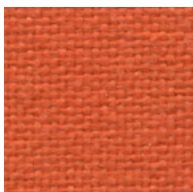
Pulizia e manutenzione

Aspirare regolarmente.

Pulire con un panno umido.



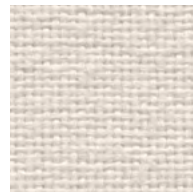
Categoria B7



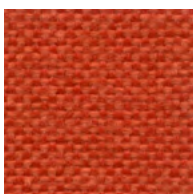
B7 051



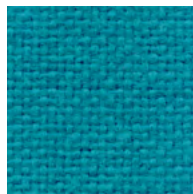
B7 110



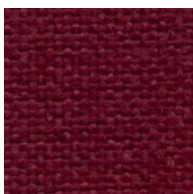
B7 100



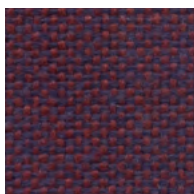
B7 403



B7 091



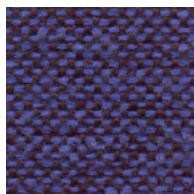
B7 017



B7 501



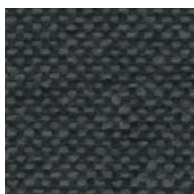
B7 007



B7 606



B7 001



B7 806



B7 034



B7 703

Roccia by Fidivi
Made in Italy

Composition

100% polyester (Trevira Cs)

Length

1,40 m

Weight

250 gr/m² ±5%

Pilling – Martindale

ISO 12945-2 degree 4-5, 5

Abrasion resistance – Martindale

UNI EN ISO 12947-2 - 70.000 rubs ±10%

Xenotest

EN ISO 105 B02 degree 5-8, 6

Colour fastness to rubbing

EN ISO 105-X12 degree 4-5, 4/5

Fire resistance

UNI 9174 - 8456 Class C1

UNI 9175 Class 1 IM

DIN 4102 Class B1

NF 92501-7 Class M1

NF D 60013 Class AM18

EN 1021-1 & 2

BS Crib 5

BS 7176 Class Medium Hazard

EN 13773 Class 1

OENORM 3800-1 Class B1,Q1,TR1

California TB117

USA NFPA 701

USA NFPA 260

IMO Part 8 Upholstery

Cleaning and maintenance

Vacuum regularly.

Wipe clean with a damp cloth.

Roccia by Fidivi
Made in Italy

Composizione

100% poliestere (Trevira Cs)

Altezza

1,40 m

Peso

250 gr/m² ±5%

Pilling – Metodo Martindale

ISO 12945-2 grado 4-5, 5

Resistenza all'abrasione – Martindale

UNI EN ISO 12947-2 - 70.000 cicli ±10%

Solidità del colore alla luce artificiale

EN ISO 105 B02 grado 5-8, 6

Solidità del colore allo sfregamento

EN ISO 105-X12 grado 4-5, 4/5

Resistenza al fuoco

UNI 9174 - 8456 Class C1

UNI 9175 Class 1 IM

DIN 4102 Class B1

NF 92501-7 Class M1

NF D 60013 Class AM18

EN 1021-1 & 2

BS Crib 5

BS 7176 Class Medium Hazard

EN 13773 Class 1

OENORM 3800-1 Class B1,Q1,TR1

California TB117

USA NFPA 701

USA NFPA 260

IMO Part 8 Upholstery

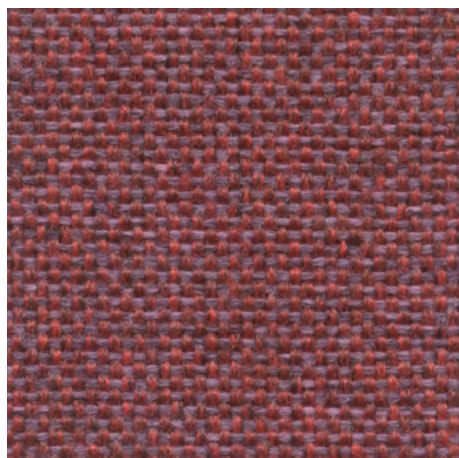
Pulizia e manutenzione

Aspirare regolarmente.

Pulire con un panno umido.



Categoria B8



B8 455



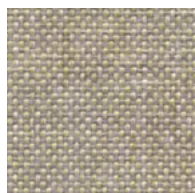
B8 657



B8 854



B8 151



B8 152



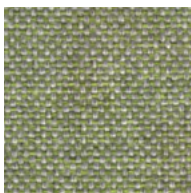
B8 555



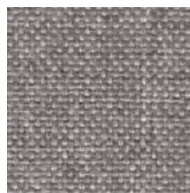
B8 656



B8 352



B8 754



B8 851



B8 251

Slight differences between dyeing lots have to be considered normal

Ganesha by Abitex
Made in Italy

Composition

65% polyurethane - 29% polyester - 6% cotton

Length

1,40 m

Width

30 m

Weight

550 gr/m²

Abrasion resistance – Martindale

ISO 5470-2 - 100.000 rubs

Xenotest

ISO 105 B02 degree 6-7

Colour fastness to rubbing

ISO 106/7 X12 dry 5, wet 5

Fire resistance

UNI 9175 Class 1 IM

EN 1021-1 & 2

BS 5852 part 1

BS 5852 crib 5

NF D 60 013

California TB 117-2013

IMO FTP Code 307 part 8

Cleaning and maintenance

Dust gently and, in case of light stains, pass the surface with a damp cloth or neutral detergent, rinse with water without squeezing.

Ganesha by Abitex
Made in Italy

Composizione

65% poliuretano - 29% poliestere - 6% cotone

Altezza

1,40 m

Lunghezza

30 m

Peso

550 gr/m²

Resistenza all'abrasione – Martindale

ISO 5470-2 - 100.000 cicli

Solidità del colore alla luce artificiale

ISO 105 B02 grado 6-7

Solidità del colore allo sfregamento

ISO 106/7 X12 secco 5, umido 5

Resistenza al fuoco

UNI 9175 Class 1 IM

EN 1021-1 & 2

BS 5852 part 1

BS 5852 crib 5

NF D 60 013

California TB 117-2013

IMO FTP Code 307 part 8

Pulizia e manutenzione

Spolverare delicatamente e in caso di macchie lievi passare la superficie con panno umido o con soluzione di detergente neutro, risciacquando senza strizzare.



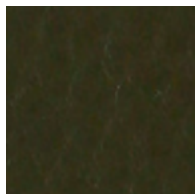
Categoria C2



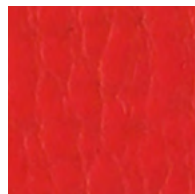
C2 103



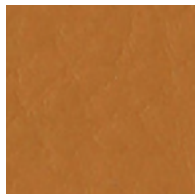
C2 602



C2 803



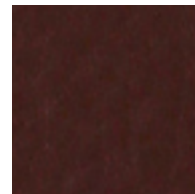
C2 306



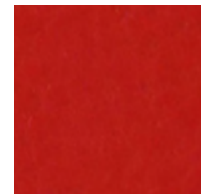
C2 404



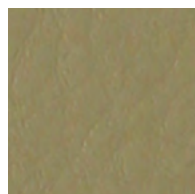
C2 503



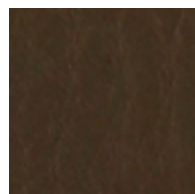
C2 313



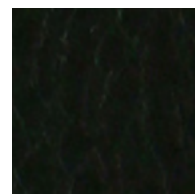
C2 315



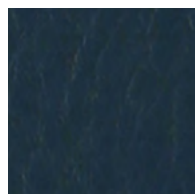
C2 406



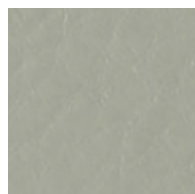
C2 408



C2 200



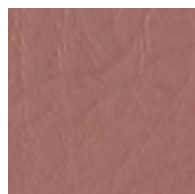
C2 705



C2 600



C2 804



C2 903

Slight differences between dyeing lots have to be considered normal

Aida by Novatex
Made in Italy

Composition

60% polyester - 30% acrylic - 10% cotton

Length

1,40 m

Weight

490 gr/m² ±5%

Pilling – Martindale

≥ 4/5

Abrasion resistance – Martindale

≥ 50.000 rubs

Tensile strenght – Warp

N 865 ±5%

Elongation 28,9% ±1,44%

Tensile strenght – Weft

N 397 ±5%

Elongation 32,1% ±1,6%

Xenotest

≥ 4/5

Colour fastness to rubbing

≥ 4

Colour fastness to cleaning

≥ 4

Fire resistance

UNI9175 Class 1 IM

BS 5852 cigarette/match

EN 1021 part 1&2

Cleaning and maintenance

Vacuum regularly.

Wipe clean with a damp cloth.

Aida by Novatex
Made in Italy

Composizione

60% poliestere - 30% acrilico - 10% cotone

Altezza

1,40 m

Peso

490 gr/m² ±5%

Pilling – Metodo Martindale

≥ 4/5

Resistenza all'abrasione – Martindale

≥ 50.000 cicli

Resistenza alla trazione nel verso dell'ordito

N 865 ±5%

Allungamento 28,9% ±1,44%

Resistenza alla trazione nel verso della trama

N 397 ±5%

Allungamento 32,1% ±1,6%

Solidità del colore alla luce artificiale

≥ 4/5

Solidità del colore allo sfregamento

≥ 4

Solidità del colore al lavaggio

≥ 4

Resistenza al fuoco

UNI9175 Classe 1 IM

BS 5852 cigarette/match

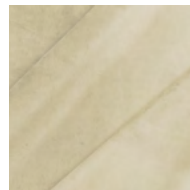
EN 1021 part 1&2

Pulizia e manutenzione

Aspirare regolarmente.

Pulire con un panno umido.

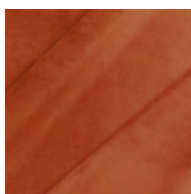
Categoria C3



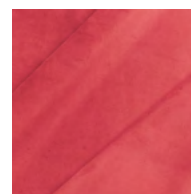
C3 051



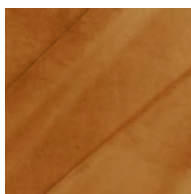
C3 011



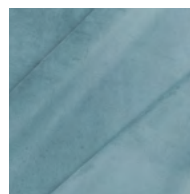
C3 015



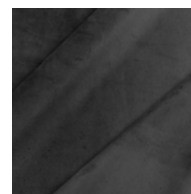
C3 056



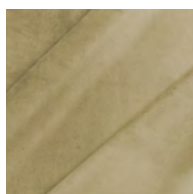
C3 040



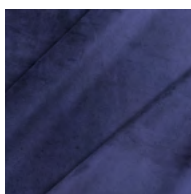
C3 055



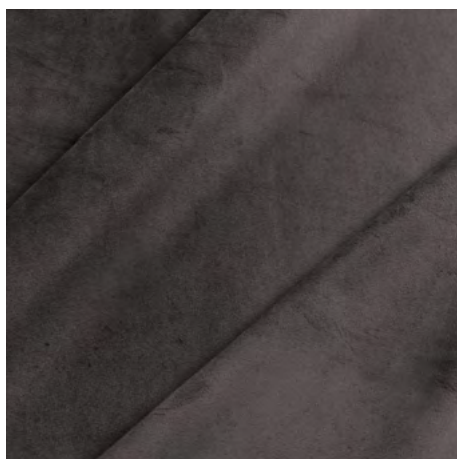
C3 032



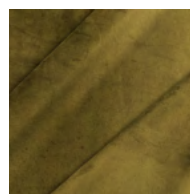
C3 041



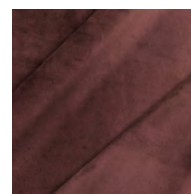
C3 029



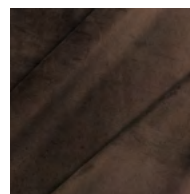
C3 005



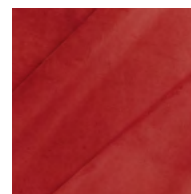
C3 039



C3 057



C3 010



C3 030

Aida Quilted Tweed by Novatex
Made in Italy

Composition

70% polyester – 30% polyurethane

Length

1,40 m

Weight

610 gr/m² ±5%

Pilling – Martindale

≥ 4/5

Abrasion resistance – Martindale

≥ 25.000 rubs

Tensile strenght – Warp

N 650 ±5%

Elongation 33,8% ±1,69%

Tensile strenght – Weft

N 880 ±5%

Elongation 25,5% ±1,27%

Xenotest

≥ 4/5

Colour fastness to rubbing

≥ 4/5

Colour fastness to cleaning

≥ 4

Cleaning and maintenance

Vacuum regularly.

Wipe clean with a damp cloth.

Aida Quilted Tweed by Novatex
Made in Italy

Composizione

70% poliestere – 30% poliuretano

Altezza

1,40 m

Peso

610 gr/m² ±5%

Pilling – Metodo Martindale

≥ 4/5

Resistenza all'abrasione – Martindale

≥ 25.000 cicli

Resistenza alla trazione nel verso dell'ordito

N 650 ±5%

Allungamento 33,8% ±1,69%

Resistenza alla trazione nel verso della trama

N 880 ±5%

Allungamento 25,5% ±1,27%

Solidità del colore alla luce artificiale

≥ 4/5

Solidità del colore allo sfregamento

≥ 4/5

Solidità del colore al lavaggio

≥ 4

Pulizia e manutenzione

Aspirare regolarmente.

Pulire con un panno umido.

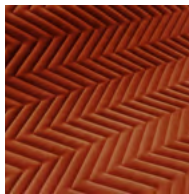
Categoria C4



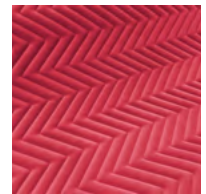
C4 Q51



C4 Q11



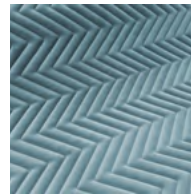
C4 Q15



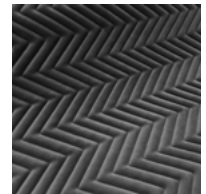
C4 Q56



C4 Q40



C4 Q55



C4 Q32



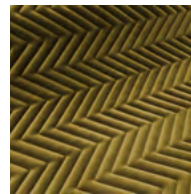
C4 Q41



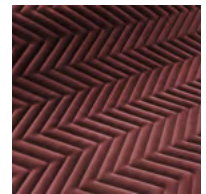
C4 Q29



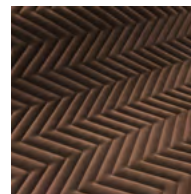
C4 Q05



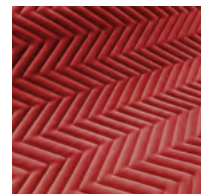
C4 Q39



C4 Q57



C4 Q10



C4 Q30

Era by Camira
Made in United Kingdom

Composition

100% polyester

Length

1,40 m

Weight

320 gr/m² ±5%

Abrasion resistance – Martindale

≥ 100.000 rubs

Xenotest

5 (ISO 105 - B02)

Colour fastness to dry rubbing

ISO 105 - X12, 4

Colour fastness to wet rubbing

ISO 105 - X12, 4

Fire resistance

EN 1021 - 1 (cigarette)

EN 1021 - 2 (match)

BS 7176 Low Hazard

EN 13501 - 1 Adhered Class B, s1, d0

EN 13501 - 1 Un-adhered Class C, s1, d0

BS 5852 Ignition source 5 with EnviroFlam5
(over CMHR 50kg/m³ foam)

BS 7176 Medium Hazard with EnviroFlam5
(over CMHR 50kg/m³ foam)

Certifications

certified to oeko-tex® standard 100

Cleaning and maintenance

Washable to 60 ° C.

Vacuum regularly.

Wipe with a damp cloth using soap and water
or use proprietary upholstery shampoo. For
deeper cleaning use steam, bleach, alcohol or
professionally dry clean.

Era by Camira
Made in United Kingdom

Composizione

100% poliestere

Altezza

1,40 m

Peso

320 gr/m² ±5%

Resistenza all'abrasione – Martindale

≥ 100.000 cicli

Solidità del colore alla luce artificiale

5 (ISO 105 - B02)

Solidità del colore allo sfregamento a secco

ISO 105 - X12, 4

Solidità del colore allo sfregamento a umido

ISO 105 - X12, 4

Resistenza al fuoco

EN 1021 - 1 (cigarette)

EN 1021 - 2 (match)

BS 7176 Low Hazard

EN 13501 - 1 Adhered Class B, s1, d0

EN 13501 - 1 Un-adhered Class C, s1, d0

BS 5852 Ignition source 5 with EnviroFlam5
(over CMHR 50kg/m³ foam)

BS 7176 Medium Hazard with EnviroFlam5
(over CMHR 50kg/m³ foam)

Certificati

certificato oeko-tex® standard 100

Pulizia e manutenzione

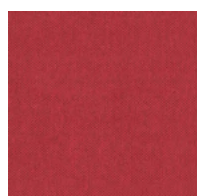
Lavabile a 60 ° C.

Aspirare regolarmente.

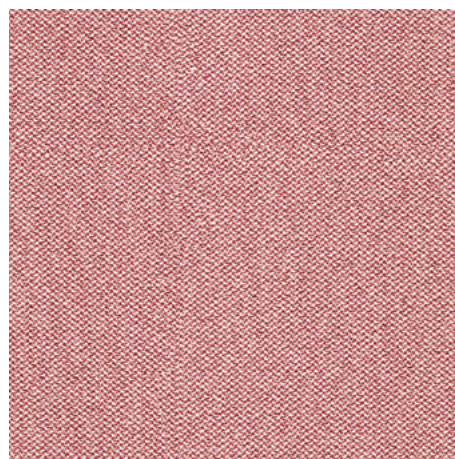
Pulire con un panno umido usando acqua e
sapone o un detergente adatto a rivestimenti.
Per una pulizia più profonda utilizzare vapore,
candeggina, alcool o un lavaggio a secco
professionale.



Categoria C5



C5 006



C5 024



C5 046



C5 032



C5 021



C5 002



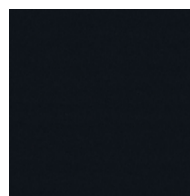
C5 027



C5 016



C5 001



C5 014



C5 013



C5 040

Slight differences between dyeing lots have to be considered normal

Aspect by Camira
Made in United Kingdom

Composition

75% trevira® cs flame retardant polyester, 25% polyester - non metallic dyestuffs

Length

1,40 m

Weight

325 gr/m² ±5%

Abrasion resistance – Martindale

≥ 50.000 rubs

Xenotest

5 (ISO 105 - B02)

Colour fastness to dry rubbing

ISO 105 - X12, 4

Colour fastness to wet rubbing

ISO 105 - X12, 4

Fire resistance

EN 1021 - 1 (cigarette)

EN 1021 - 2 (match)

BS 7176 Low Hazard

BS 5852 Ignition source 5
(over CMHR 50kg/m³ foam)

BS 7176 Medium Hazard
(over CMHR 50kg/m³ foam)

DIN 4102 B1 NF D 60-013
(over CMHR 50kg/m³ foam)

ÖNORM B 3825 & A 3800-1
(over CMHR 58kg/m³ foam)

UNI 9175 Classe 1 IM

Certifications

certified to oeko-tex® standard 100

Cleaning and maintenance

Washable to 60 ° C.

Vacuum regularly.

Wipe clean with a damp cloth or upholstery detergent.

Aspect by Camira
Made in United Kingdom

Composizione

75% trevira® cs poliestere ignifugo, 25% poliestere – senza coloranti metallici

Altezza

1,40 m

Peso

325 gr/m² ±5%

Resistenza all'abrasione – Martindale

≥ 50.000 cicli

Solidità del colore alla luce artificiale

5 (ISO 105 - B02)

Solidità del colore allo sfregamento a secco

ISO 105 - X12, 4

Solidità del colore allo sfregamento a umido

ISO 105 - X12, 4

Resistenza al fuoco

EN 1021 - 1 (cigarette)

EN 1021 - 2 (match)

BS 7176 Low Hazard

BS 5852 Ignition source 5
(over CMHR 50kg/m³ foam)

BS 7176 Medium Hazard
(over CMHR 50kg/m³ foam)

DIN 4102 B1 NF D 60-013
(over CMHR 50kg/m³ foam)

ÖNORM B 3825 & A 3800-1
(over CMHR 58kg/m³ foam)

UNI 9175 Classe 1 IM

Certificati

certificato oeko-tex® standard 100

Pulizia e manutenzione

Lavabile a 60 ° C.

Aspirare regolarmente.

Pulire con un panno umido o detergente adatto a rivestimenti.



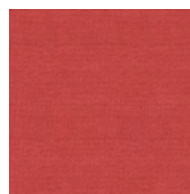
Categoria D3



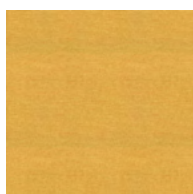
D3 004



D3 007



D3 005



D3 001



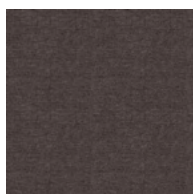
D3 020



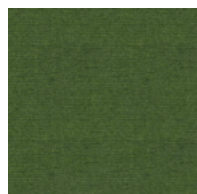
D3 025



D3 002



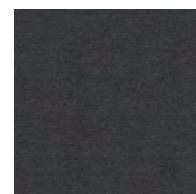
D3 015



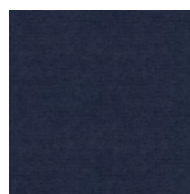
D3 018



D3 031



D3 030



D3 024

Slight differences between dyeing lots have to be considered normal

Extrema Au Ikon by Flukso
Made in Italy

Composition

63% polyurethane – 29% cotton – 8% PES

Width

140 cm

Weight

480 gr/m²

Abrasion resistance

UNI EN ISO 12947-2

150.000 rubs

Xenotest

UNI EN ISO 105-B02

5/6 blue scale

Colour fastness to sweat

UNI EN ISO 105-E04

4/5 grey scale

Bending strenght

UNI 4818-13

150.000 rubs

Tensile strenght

UNI EN ISO 1421

N/50mm

450 long. - 400 transv.

Elongation at break

UNI EN ISO 1421

10% long. - 20% transv.

Tear strenght

UNI EN ISO 9073-4

N 35 long. - N 35 transv.

Fire resistance

BS 5852 CRIB 5

BS 5852-1 PART I

IMO RESOLUTION A.652 (16) :1989

EN 1021-1

EN 1021-2

UNI 9175 CLASS 1IM

TB 117 : 2013

Cleaning and maintenance

Dust gently and, in case of light stains, pass the surface with a damp cloth or neutral detergent, rinse with water without squeezing.

Extrema Au Ikon by Flukso
Made in Italy

Composizione

63% poliuretano – 29% cotone – 8% PES

Altezza

140 cm

Peso

480 gr/m²

Resistenza all'abrasione

UNI EN ISO 12947-2

150.000 cicli

Solidità del colore alla luce artificiale

UNI EN ISO 105-B02

5/6 scala dei blu

Solidità del colore al sudore

UNI EN ISO 105-E04

4/5 scala dei grigi

Resistenza alle flessioni

UNI 4818-13

150.000 cicli

Resistenza alla trazione

UNI EN ISO 1421

N/50mm

450 long. - 400 trasv.

Allungamento alla rottura

UNI EN ISO 1421

10% long. - 20% trasv.

Resistenza alla lacerazione

UNI EN ISO 9073-4

N 35 long. - N 35 trasv.

Resistenza al fuoco

BS 5852 CRIB 5

BS 5852-1 PARTE I

IMO RESOLUTION A.652 (16) :1989

EN 1021-1

EN 1021-2

UNI 9175 CLASSE 1IM

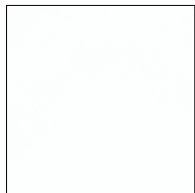
TB 117 : 2013

Pulizia e manutenzione

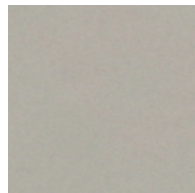
Spolverare delicatamente e in caso di macchie lievi passare la superficie con panno umido o con soluzione di detergente neutro, risciacquando senza strizzare.



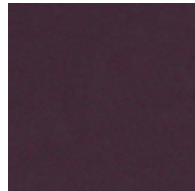
Categoria L6



L6 130



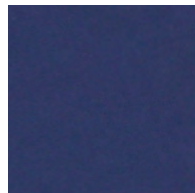
L6 243



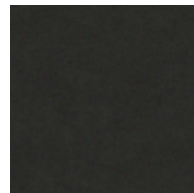
L6 830



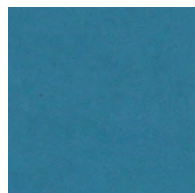
L6 930



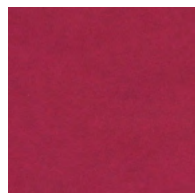
L6 203



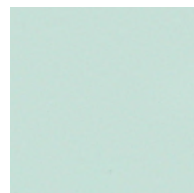
L6 223



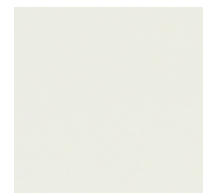
L6 183



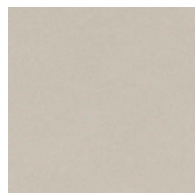
L6 133



L6 173



L6 230



L6 330



L6 530

Slight differences between dyeing lots have to be considered normal

Blazer by Camira
Made in United Kingdom

Composition

100% virgin wool - non metallic dyestuffs

Length

1,40 m

Weight

460 gr/m² ±5%

Abrasion resistance – Martindale

≥ 50.000 rubs

Xenotest

5 (ISO 105 - B02)

Colour fastness to dry rubbing

ISO 105 - X12, 4

Colour fastness to wet rubbing

ISO 105 - X12, 4

Fire resistance

EN 1021 - 1 (cigarette)

EN 1021 - 2 (match)

BS 7176 Low Hazard

NF D 60-013

ÖNORM B 3825 & A 3800-1

(58kg/m³ CMHR Foam)

UNI 9175 Classe 1 IM

BS 476 Part 7 Class 1

EN 13501-1 Adhered Class D, s1, d0

Cleaning and maintenance

Vacuum regularly.

Professionally dry clean or wipe clean with a damp cloth.

Blazer by Camira
Made in United Kingdom

Composizione

100% lana vergine – senza coloranti metallici

Altezza

1,40 m

Peso

460 gr/m² ±5%

Resistenza all'abrasione – Martindale

≥ 50.000 cicli

Solidità del colore alla luce artificiale

5 (ISO 105 - B02)

Solidità del colore allo sfregamento a secco

ISO 105 - X12, 4

Solidità del colore allo sfregamento a umido

ISO 105 - X12, 4

Resistenza al fuoco

EN 1021 - 1 (cigarette)

EN 1021 - 2 (match)

BS 7176 Low Hazard

NF D 60-013

ÖNORM B 3825 & A 3800-1

(58kg/m³ CMHR Foam)

UNI 9175 Classe 1 IM

BS 476 Part 7 Class 1

EN 13501-1 Adhered Class D, s1, d0

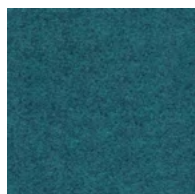
Pulizia e manutenzione

Aspirare regolarmente.

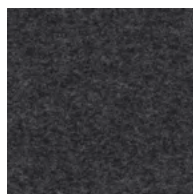
Lavare a secco professionalmente o pulire con un panno umido.



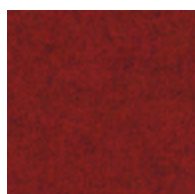
Categoria L7



L7 03B



L7 030



L7 063



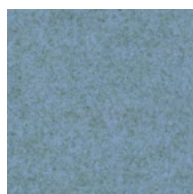
L7 03E



L7 02T



L7 086



L7 01R



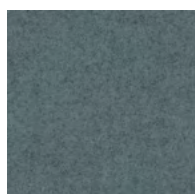
L7 03D



L7 02R



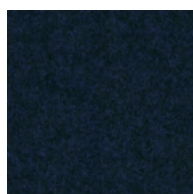
L7 028



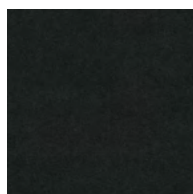
L7 033



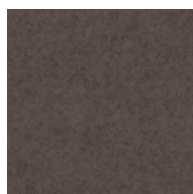
L7 01F



L7 062



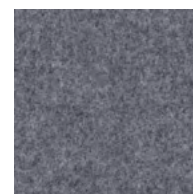
L7 01M



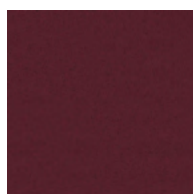
L7 031



L7 008



L7 01E



L7 021



L7 02Y

Slight differences between dyeing lots have to be considered normal

Synergy Quilt Hourglass by Camira
Made in United Kingdom

Composition

95% virgin wool, 5% polyamide with polyester and polyurethane foam backing

Length

1,65 m

Weight

700 gr/m² ±10%

Pattern repeat

stitch repeat 5 cm ±5%

Abrasion resistance – Martindale

≥ 100.000 rubs

Xenotest

5 (ISO 105 - B02)

Colour fastness to dry rubbing

ISO 105 - X12, 4

Colour fastness to wet rubbing

ISO 105 - X12, 4

Fire resistance

EN 1021 - 1 (cigarette)

EN 1021 - 2 (match)

BS 7176 Low Hazard

Cleaning and maintenance

Vacuum regularly.

Professionally dry clean or wipe clean with a damp cloth.

Synergy Quilt Hourglass by Camira
Made in United Kingdom

Composizione

95% lana vergine, 5% poliammide con supporto in poliestere e poliuretano espanso

Altezza

1,65 m

Peso

700 gr/m² ±10%

Ripetizione fantasia

ripetizione cucitura 5 cm ±5%

Resistenza all'abrasione – Martindale

≥ 100.000 cicli

Solidità del colore alla luce artificiale

5 (ISO 105 - B02)

Solidità del colore allo sfregamento a secco

ISO 105 - X12, 4

Solidità del colore allo sfregamento a umido

ISO 105 - X12, 4

Resistenza al fuoco

EN 1021 - 1 (cigarette)

EN 1021 - 2 (match)

BS 7176 Low Hazard

Pulizia e manutenzione

Aspirare regolarmente.

Lavare a secco professionalmente o pulire con un panno umido.



Categoria L9



L9 Q08

Floyd by Kvadrat
Made in Denmark

Composition

50% polyester - 45% wool - 5% nylon

Length

1,40 m

Weight

370 gr/m

Pilling – Martindale

EN ISO 12945

3/4

Abrasion resistance – Martindale

EN ISO 12947

50.000 rubs

Xenotest

ISO 105-B02

6/7

Fire resistance

BS 5852 Crib 5 with treatment

BS 5852 part 1 with treatment

BS 5852 part 1, ig. s. 0

IMO FTP Code 2010 Part 8

US Cal. Bull. 117-2013

EN 1021-1/2

AS/NZS 3837, class 2

Benefits of wool

The wool:

is a renewable resource

is very comfortable because of its ability to absorb
and give off humidity

is flame retardant

is biodegradable

is naturally soil resistant

ages with grace

Environmental benefits

No use of AZO dyes

No use of dyes containing heavy metals/complies
with ETAD norm

No use of brominated flame retardants

Complies with REACH

Cleaning and maintenance

Vacuuming and dry cleaning.

Floyd by Kvadrat
Made in Denmark

Composizione

50% poliestere – 45% lana – 5% nylon

Altezza

1,40 m

Peso

370 gr/m

Pilling – Metodo Martindale

EN ISO 12945

3/4

Resistenza all'abrasione – Martindale

EN ISO 12947

50.000 cicli

Solidità del colore alla luce artificiale

ISO 105-B02

6/7

Resistenza al fuoco

BS 5852 Crib 5 with treatment

BS 5852 part 1 with treatment

BS 5852 part 1, ig. s. 0

IMO FTP Code 2010 Part 8

US Cal. Bull. 117-2013

EN 1021-1/2

AS/NZS 3837, class 2

Benefici della lana

La lana:

è una risorsa rinnovabile

è molto confortevole grazie alla sua capacità
di assorbire e rilasciare l'umidità

è un ritardante di fiamma

è biodegradabile

è naturalmente resistente al suolo

si consuma gradualmente

Benefici ambientali

Non prevede l'uso coloranti azoici

Non prevede l'uso di coloranti contenenti
metalli pesanti/ risponde alla normativa ETAD

Non prevede l'uso di ritardanti di fiamma
bromurati

Conforme a REACH

Pulizia e manutenzione

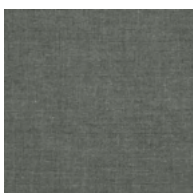
Usare l'aspirapolvere e pulire a secco.



Categoria M1



M1 213



M1 983



M1 163



M1 223



M1 623



M1 693



M1 193

Deans by Vescom
Made in Netherlands

Composition

100% polyester FR

Length

1,38 m

Weight

861 gr/m

Pilling – Martindale

ISO 12945-2 4 (scale 1–5)

ASTM D3511 3 (scale 1–5)

Abrasion resistance – Martindale 12 KPA

ISO 12947-2 110.000 rubs Martindale

ASTM D4157 100.000 double rubs wyzenbeek

Xenotest

ISO 105-B02 6-7 (scale 1–8)

AATCC 16.3: 40 hours 5 (scale 1–8)

Colour fastness to dry rubbing

ISO 105-X12 dry 4-5 (scale 1–5)

AATCC 8 dry 5 (scale 1–5)

Colour fastness to wet rubbing

ISO 105-X12 wet 4-5

AATCC 8 wet 5

Seam slippage

ISO 13936-2 warp 4.3 mm/ weft 3 mm

ASTM D4034 warp 39 lbf / weft 85 lbf

Fire resistance

EN 1021/ 1– 2

BS 5852, crib 5

NF P 92 / 503 – 507, M1

DIN 4102, B1

IMO 2010 FTP part 8

UNI 9175, classe 1

Cal TB 117

NFPA 260, class 1

Cleaning and maintenance

Vacuum regularly.

Wipe clean with a damp cloth.

Deans by Vescom
Made in Netherlands

Composizione

100% poliestere FR

Altezza

1,38 m

Peso

861 gr/m

Pilling – Metodo Martindale

ISO 12945-2 4 (scala 1–5)

ASTM D3511 3 (scala 1–5)

Resistenza all'abrasione – Martindale 12 KPA

ISO 12947-2 110.000 rubs Martindale

ASTM D4157 100.000 double rubs wyzenbeek

Solidità del colore alla luce artificiale

ISO 105-B02 6-7 (scala 1–8)

AATCC 16.3: 40 hours 5 (scala 1–8)

Solidità del colore allo sfregamento a secco

ISO 105-X12 asciutto 4-5 (scala 1–5)

AATCC 8 asciutto 5 (scala 1–5)

Solidità del colore allo sfregamento a umido

ISO 105-X12 umido 4-5

AATCC 8 umido 5

Resistenza al taglio cucitura

ISO 13936-2 catena 4.3 mm / trama 3 mm

ASTM D4034 catena 39 lbf / trama 85 lbf

Resistenza al fuoco

EN 1021/ 1– 2

BS 5852, crib 5

NF P 92 / 503 – 507, M1

DIN 4102, B1

IMO 2010 FTP part 8

UNI 9175, classe 1

Cal TB 117

NFPA 260, class 1

Pulizia e manutenzione

Aspirare regolarmente.

Pulire con un panno umido.



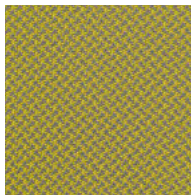
double face fabrics
Categoria N2



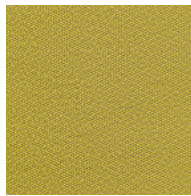
N2 01M



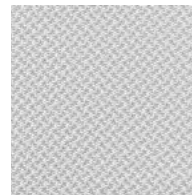
N2 01P



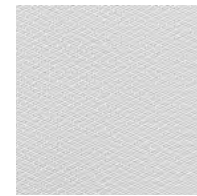
N2 05M



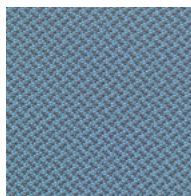
N2 05P



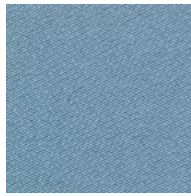
N2 09M



N2 09P



N2 10M



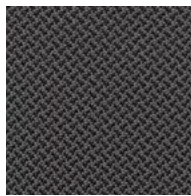
N2 10P



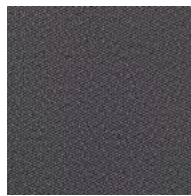
N2 11M



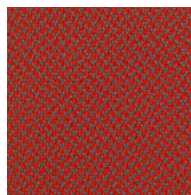
N2 11P



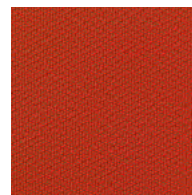
N2 12M



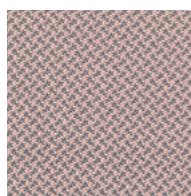
N2 12P



N2 13M



N2 13P



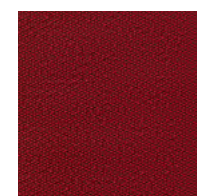
N2 14M



N2 14P



N2 15M



N2 15P

Slight differences between dyeing lots have to be considered normal

Leather by Futura Leathers
Made in Italy

Thickness

ca. 0,90 mm

Average size

4,20 m²

Raw material

Bovine leather

Colour fastness to rubbing

Nr. 500 dry rubs

IUF 450 / UNI EN ISO 11640

≥ 4 grey scale

Nr. 150 wet rubs

IUF 450 / UNI EN ISO 11640

≥ 4 grey scale

Nr. 80 alkaline ph 8

IUF 450 / UNI EN ISO 11640

≥ 4 grey scale

Flexing endurance

IUP 20

UNI EN ISO 5402

≥30.000

Tear strenght

IUP 40

UNI EN ISO 3377-1

≥20N

Adhesion

IUF 470

UNI EN ISO 11644

≥3.50 N/cm

Xenotest

IUF 402

UNI EN ISO 105-B02

5 blue scale

Fire resistance

UNI EN ISO 1021-1/2

pass

BS 5852 1990 Sec. 4 NI/O-1

pass

California T.B. 117

pass

Leather complies with the strict regulations and EU Directives covering the use and presence of PCP, CFC, Chromo VI, Dimethylfumarate (DMF) and Azo dyestuffs during the tanning process

Leather by Futura Leathers
Made in Italy

Spessore

ca. 0,90 mm

Taglia media

4,20 m²

Materia prima

Pelle bovina

Solidità del colore allo sfregamento

Nr. 500 battute a secco

IUF 450 / UNI EN ISO 11640

≥ 4 scala dei grigi

Nr. 150 battute a umido

IUF 450 / UNI EN ISO 11640

≥ 4 scala dei grigi

Nr. 80 battute al sudore ph 8

IUF 450 / UNI EN ISO 11640

≥ 4 scala dei grigi

Flessometro

IUP 20

UNI EN ISO 5402

≥30.000

Resistenza alla trazione

IUP 40

UNI EN ISO 3377-1

≥20N

Adesione

IUF 470

UNI EN ISO 11644

≥3.50 N/cm

Solidità del colore alla luce artificiale

IUF 402

UNI EN ISO 105-B02

5 scala dei blu

Resistenza al fuoco

UNI EN ISO 1021-1/2

positivo

BS 5852 1990 Sec. 4 NI/O-1

positivo

California T.B. 117

positivo

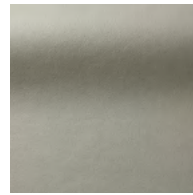
La pelle soddisfa le severe leggi e normative Europee riguardanti l'uso e la presenza di PCP, CFC, Cromo (VI), Dimethylfumarate (DMF) e Azocoloranti nel processo di concia



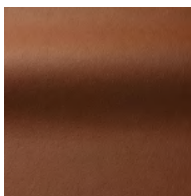
Categoria F1



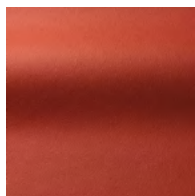
F1 329



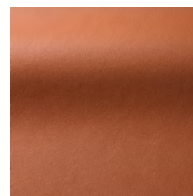
F1 316



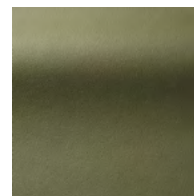
F1 165



F1 387



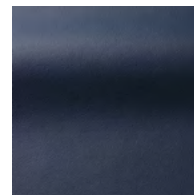
F1 305



F1 371



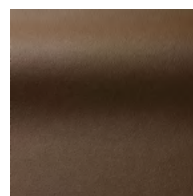
F1 332



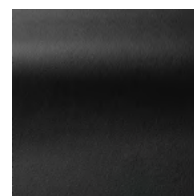
F1 140



F1 360



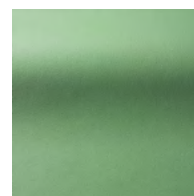
F1 340



F1 168



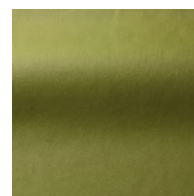
F1 611



F1 170



F1 171



F1 104

Slight differences between dyeing lots have to be considered normal

Extra Leather by Futura Leathers
Made in Italy

Thickness

ca. 0,90 mm

Average size

4,20 m²

Raw material

Bovine leather from Australia/New Zealand/Europe

Xenotest

IUF 402

UNI EN ISO 105-B02

5 blue scale

Colour fastness to rubbing

Nr. 500 dry rubs

IUF 450 / UNI EN ISO 11640

≥ 4 grey scale

Nr. 150 wet rubs

IUF 450 / UNI EN ISO 11640

≥ 4 grey scale

Nr. 80 alkaline ph 8

IUF 450 / UNI EN ISO 11640

≥ 4 grey scale

Flexing endurance

IUP 20

UNI EN ISO 5402

≥ 30.000

Tear strenght

IUP 40

UNI EN ISO 3377-1

≥ 20N

Adhesion

IUF 470

UNI EN ISO 11644

≥ 3.50 N/cm

Fire resistance

UNI EN ISO 1021-1/2

pass

BS 5852 1990 Sec. 4 NI/O-1

pass

California T.B. 117

pass

Extra leather complies with the strict regulations and EU Directives covering the use and presence of PCP, CFC, Chromo VI, Dimethylfumarate (DMF) and Azo dyestuffs during the tanning process

Extra Leather by Futura Leathers
Made in Italy

Spessore

ca. 0,90 mm

Taglia media

4,20 m²

Materia prima

Pelle bovina da Australia/Nuova Zelanda/Europa

Solidità del colore alla luce artificiale

IUF 402

UNI EN ISO 105-B02

5 scala dei blu

Solidità del colore allo sfregamento

Nr. 500 battute a secco

IUF 450 / UNI EN ISO 11640

≥ 4 scala dei grigi

Nr. 150 battute a umido

IUF 450 / UNI EN ISO 11640

≥ 4 scala dei grigi

Nr. 80 battute al sudore ph 8

IUF 450 / UNI EN ISO 11640

≥ 4 scala dei grigi

Flessometro

IUP 20

UNI EN ISO 5402

≥ 30.000

Resistenza alla trazione

IUP 40

UNI EN ISO 3377-1

≥ 20N

Adesione

IUF 470

UNI EN ISO 11644

≥ 3.50 N/cm

Resistenza al fuoco

UNI EN ISO 1021-1/2

positivo

BS 5852 1990 Sec. 4 NI/O-1

positivo

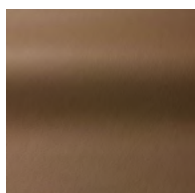
California T.B. 117

positivo

La pelle extra soddisfa le severe leggi e normative Europee riguardanti l'uso e la presenza di PCP, CFC, Cromo (VI), Dimethylfumarate (DMF) e Azocoloranti nel processo di concia



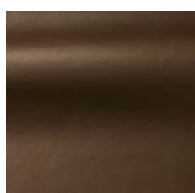
Categoria G1



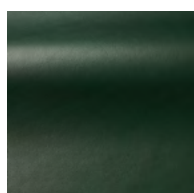
G1 332



G1 339



G1 611



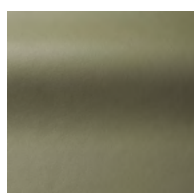
G1 545



G1 340



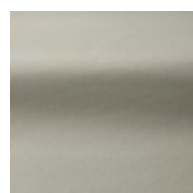
G1 636



G1 336



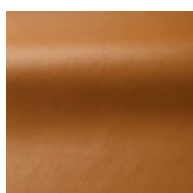
G1 448



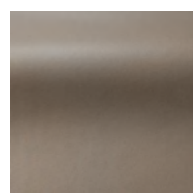
G1 252



G1 701



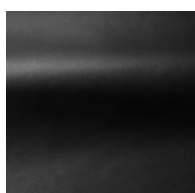
G1 410



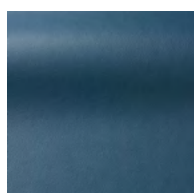
G1 221



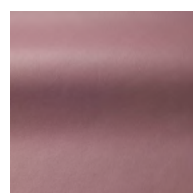
G1 250



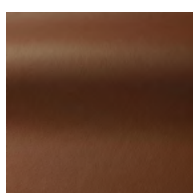
G1 614



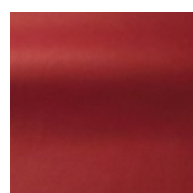
G1 613



G1 704



G1 500



G1 605

Slight differences between dyeing lots have to be considered normal

Steelcut Trio 3 by Kvadrat
Made in Denmark

Composizione

90% lana - 10% nylon

Altezza

140 cm

Peso

770 gr/m

Pilling

EN ISO 12945 - 4

Resistenza all'abrasione – Martindale

EN ISO 12947

100.000 cicli

Resistenza del colore alla luce artificiale

ISO 105-B02 - 5/7

Resistenza al fuoco

AS/NZS 1530.3

AS/NZS 3837 class 2

BS 5852 Crib 5 with treatment

BS 5852 part 1

DIN 4102 B2

EN 1021-1/2

IMO FTP Code 2010: Part 8

NF D 60 013

NFPA 260

Önorm B1/Q1

SN 198 898 5.3 with treatment

UNI 9175 1IM

US Cal. Bull. 117-2013

Benefici della lana

La lana:

è una risorsa rinnovabile

è molto confortevole grazie alla sua capacità di assorbire e rilasciare l'umidità

è un ritardante di fiamma

è biodegradabile

è naturalmente resistente al suolo

si consuma gradualmente

Benefici ambientali

Risponde ad EU Ecolabel

Non prevede l'uso coloranti azoici

Non prevede l'uso di coloranti contenenti metalli pesanti/ risponde alla normativa ETAD

Non contiene formaldeide

Non prevede l'uso di ritardanti di fiamma bromurati

Non sbiadisce

Oli di filatura biodegradabili

Conforme a REACH

Pulizia e manutenzione

Usare l'aspirapolvere e pulire a secco.



Steelcut Trio 3 by Kvadrat
Made in Denmark

Composition

90% wool - 10% nylon

Width

140 cm

Weight

770 gr/m

Pilling

EN ISO 12945 - 4

Abrasion resistance – Martindale

EN ISO 12947

100.000 rubs

Xenotest

ISO 105-B02 - 5/7

Fire resistance

AS/NZS 1530.3

AS/NZS 3837 class 2

BS 5852 Crib 5 with treatment

BS 5852 part 1

DIN 4102 B2

EN 1021-1/2

IMO FTP Code 2010: Part 8

NF D 60 013

NFPA 260

Önorm B1/Q1

SN 198 898 5.3 with treatment

UNI 9175 1IM

US Cal. Bull. 117-2013

Benefits of wool

The wool:

is a renewable resource

is very comfortable because of its ability to absorb and give off humidity

is flame retardant

is biodegradable

is naturally soil resistant

ages with grace

Environmental benefits

Complies with EU Eco Flower

No use of AZO dyes

No use of dyes containing heavy metals/ complies with ETAD norm

No content of formaldehyde

No use of brominated flame retardants

Not bleached

Biodegradable spinning oil

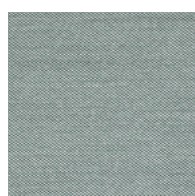
Complies with REACH

Cleaning and maintenance

Vacuuming and dry cleaning.



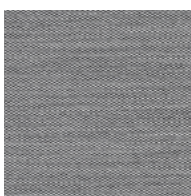
Categoria H2



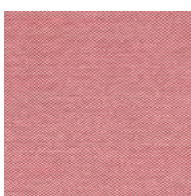
H2 916



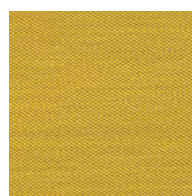
H2 336



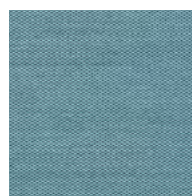
H2 124



H2 636



H2 453



H2 983

Mesh by Krall & Roth
Made in Germany

Composizione

75% poliestere - 25% poliammide

Altezza

120 cm

Peso

ca. 420 gr/ml

Resistenza all'abrasione

DIN EN ISO 12947-2:2007

40.000 cicli Martindale (carico 12 kpa)

Solidità del colore alla luce artificiale

DIN EN ISO 105-B02:2002

5/7 scala dei blu

Solidità del colore allo sfregamento secco e umido

DIN EN ISO 105-X12:2002

4/5

Solidità alla traspirazione

DIN EN ISO 105-E04:2009

4/5 acido e alcalino

Infiammabilità – Test della sigaretta

DIN EN 1021:2006-01

testato su schiumato ritardante di fiamma B3
densità minima 22 kg/m³

DIN 66084 P-c

Resistenza del colore al lavaggio a secco

DIN EN ISO 105-D01:2010

4/5

Pulizia e manutenzione

Usare l'aspirapolvere o lavare a secco.

Mesh by Krall & Roth
Made in Germany

Composition

75% polyester - 25% polyamid

Width

120 cm

Weight

ca. 420 gr/lm

Abrasion resistance

DIN EN ISO 12947-2:2007

40.000 rubs Martindale (load 12 kpa)

Xenotest

DIN EN ISO 105-B02:2002

5/7 blue scale

Colour fastness to dry and wet rubbing

DIN EN ISO 105-X12:2002

4/5

Fastness to perspiration

DIN EN ISO 105-E04:2009

4/5 acid and alkaline

Flammability – Cigarette test

DIN EN 1021:2006-01

tested with non flame retardant foam B3 minimum
density of 22 kg/m³

DIN 66084 P-c

Colour fastness to dry cleaning

DIN EN ISO 105-D01:2010

4/5

Cleaning and maintenance

Vacuum-cleaning or dry cleaning.



Categoria RX



RX 00F



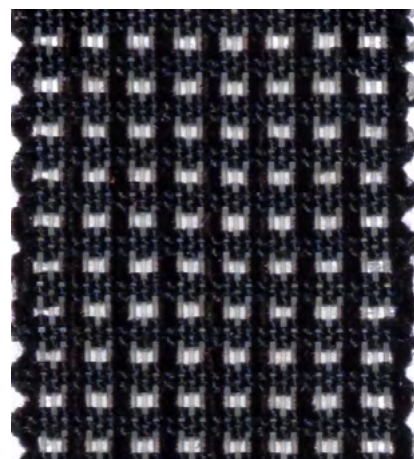
RX 00K



RX 00B



RX 00A



RX 00H

Paintings & chromium platings

Matte White, Matte Burro, Matte Rose, Matte Mint, Matte Cappuccino, Matte Army, Matte Black

Varnish made with chrome and lead-free pigments. Two-component enamel with polyurethane and acrylic resins. Excellent resistance to chemical and atmospheric agents, detergents, fuels and lubricants.

Embossed Antracite, Embossed Porfido

“AkzoNobel” registered trademark Interpon 610. Polyester powder coatings TGIC-free Paintings with great light and warmth fastness. High resistance to direct sunlight and atmospheric agents.

Embossed Corten

2k two-component varnish, Corten is able to confer any support the aspect of the most natural oxidation of the real corten steel, giving at the same time a particular movement to all those supports which due to their chemical and physical nature cannot get oxidized. The effect Materic Corten does not release any powder of iron oxide.

Metal Gold, Metal Copper, Metal Cacao

1k one-component varnish in imitation of the flat galvanic finishings, it gives light and great brightness to the treated support. Matt metallic final product. highly bright, with anti-scratch performing characteristics and resistant against the main cleaning products and food, through the employment of specific cycles of painting. Apt for supports made on metal, plastic, wood and composites, both for interior and for outdoor employments.



Metal Diamond

2k two-component varnish with a final bright and diamond effect, in imitation of the goldsmith's art 20 gloss, without overpainting with a top coat. Apt both for interior and for outdoor employment. Highly resistant against usury and abrasion.

Polished Chrome

CEDIA Tin-plating process – Neutral cobalt
78% Sn – 22% Cobalt
Plate flash deposits of tin – cobalt alloy

Chromium platings with galvanic treatment

Paintings & chromium platings

Matte White, Matte Burro, Matte Rose, Matte Mint, Matte Cappuccino, Matte Army, Matte Black

Prodotto realizzato con pigmenti esenti da cromo e piombo. Smalto bicomponente a base di resine poliuretaniche ed acriliche. Ottime caratteristiche di resistenza agli agenti chimici ed atmosferici, ai detersivi, ai carburanti e lubrificanti.

Embossed Antracite, Embossed Porfido

“AkzoNobel” marchio registrato, Interpon 610. Polveri a base poliestere senza l'uso di TGIC Verniciature con ottime caratteristiche di resistenza alla luce ed al calore. Elevata resistenza ai raggi solari ed agli agenti atmosferici.

Embossed Corten

Smalto bicomponente 2k, Corten è uno smalto in grado di conferire a qualsiasi supporto l'aspetto della più naturale ossidazione del vero Acciaio Corten naturale, regalando matericità a tutti quei supporti che per natura chimico-fisica non possono ossidarsi. L'effetto Materico Corten non rilascia polvere di ossido di ferro.

Metal Gold, Metal Copper, Metal Cacao

Smalto metallico liscio monocomponente 1k ad imitazione delle finiture galvaniche velur lisce, regala luce e grande brillantezza finale al supporto trattato. Prodotto a finire metallizzato opaco, altamente luminoso, con performanti caratteristiche anti-graffio e resistente ai principali prodotti di pulizia e agli alimenti, attraverso l'utilizzo degli appositi cicli di verniciatura. Adatto per supporti in metallo, plastica, legno e compositi, sia per applicazioni interne, sia per applicazioni esterne.



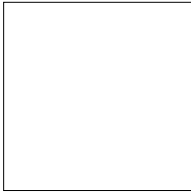
Metal Diamond

Smalto bicomponente 2k con un effetto diamantato luminoso a finire, ad effetto ed imitazione della diamantatura orafa a finire 20 gloss, senza sovraverniciatura con trasparente. Adatto sia per ambienti da interior che da outdoor. Resistentissimo all'usura e all'abrasione.

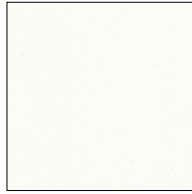
Cromo lucido

CEDIA Processo stagno – Cobalto neutro
78% Sn – 22% Cobalto
Deposizione flash della lega stagno – cobalto

Cromature a trattamento galvanico



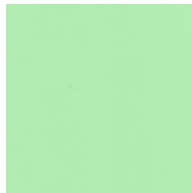
15 - matte white



16 - matte burro



13 - matte rose



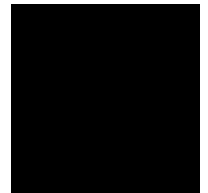
19 - matte mint



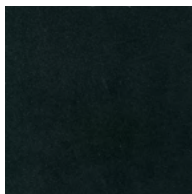
18 - matte cappuccino



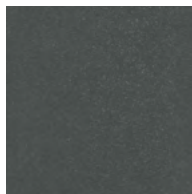
9 - matte army



2 - matte black



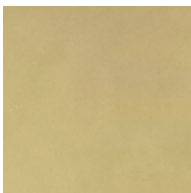
10 - embossed antracite



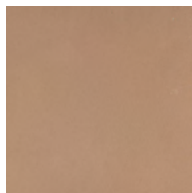
21 - embossed porfido



20 - embossed corten



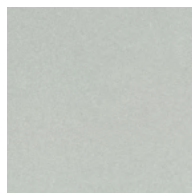
23 - metal gold



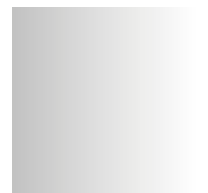
24 - metal copper



25 - metal cacao



22 - metal diamond



5 - polished chrome



SITIA srl
Via G. Matteotti 6
36056 Tezze sul Brenta, Vicenza, Italy
T +39 0424 898497 / 898382 — F +39 0424 1700102
info@sitia.com — www.sitia.com

REGIONAL OFFICE

SINGAPORE
40 Carpenter Street
059919 Singapore
T: +65 91376564
jr@motion-consult.com

SHOWROOMS

London – UK
The Pipeworks, 26-30
Prescott Place, London, SW4 6B
T: +44 020 7720 6006 – antonio@laporta.co.uk

Dublin – IRELAND
7-8 Burton Hall Road,
Sandyford Business Park, Dublin 18
T: +353 (0) 1 217 8000 – mleyden@bizquip.ie

Amersfoort – NETHERLANDS
Basicweg 22
3821 BR Amersfoort, Nederland
T: +31 (0) 33 4535090 – patrick.dommelen@nowystyl.com

Jakarta – INDONESIA
Jl. Pakubuwono VI No.79
Kebayoran Baru, Jakarta Selatan 12120
T: + 62 21 725 7979 – zaky.makarim@malka.co.id

Los Angeles – USA
8790 Beverly Blvd
West Hollywood, CA 90048
T: +1 310 652 2520 – soluzionila@sbcglobal.net

Abu Dhabi – UNITED ARAB EMIRATES
SHEIKHA FATEMA PARK, GF02
T: +971 52 566 96 80 - inquiry@corsodesign.me

West Melbourne – AUSTRALIA
Unit 3/ 62 Fallon Street Brunswick VIC 3056
T: + 03 8379 0200 – melbourne@uci.com.au

Ho Chi Minh – VIETNAM
199C Nguyen Van Huong, Thao Dien Ward District 2
T: +84 028 36369944 – thuynt@akacompany.com.vn

Yerevan – REPUBLIC OF ARMENIA
9 Baghramyan ave., off. 1,
T: 00 374 10 52 13 53 – info@royalint.org

Vicenza – ITALY
Piazza dei Signori, 56, 36100
C: +39 348 391 1368 – lidea@amatori.it

Accra – GHANA
Sunflower Road – East Legon
T: +233 54432 2920 – design@casapalladio.com

CREATIVE DIRECTION

(Creative & art direction, concept & styling)
MM Company / mmcompany.eu

PRINTED IN ITALY

Laboratorio Grafico BST / graficabst.com

PHOTOS

Photopiù (campaign, still life & main photos) / photopiù.it
Wellenhofer Designs (3, 54, 55, 87)

Linea Zero
ZINNER INGENIEURE | ARCHITEKTEN
Arch. Giorgio Parise
Arch. Paolo Didoné
DVS Srl Bassano d/G
Wever & Ducre Italia
Mariasole Valentina Battocchio (model)
Anna Forestan (model)
Matteo Pala tappeti
OLEV Light
Prandina Lighting
Prodital Leather
UKB Gemeinnützige Urlaubskasse des Bayerischen
Baugewerbes e.
Arch. Diego Bettin
Diquigiovanni Srl
Minuzzo Srl
Chiminello Srl
Integra Business Consulting
GLOBAL ART W.L.L.