

systemtronic

datasheet HOLD



General description:

Due to its design and functionality this auxiliary element fits perfectly into multiple spaces: bedrooms, kitchens, bathrooms, offices...
Manufactured in folded steel sheet and coated with polyester paint.

Designer: Estudio Enblanc.



Technical description:

Material: Steel.

Dimensions:

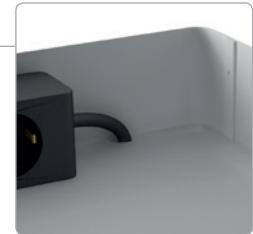
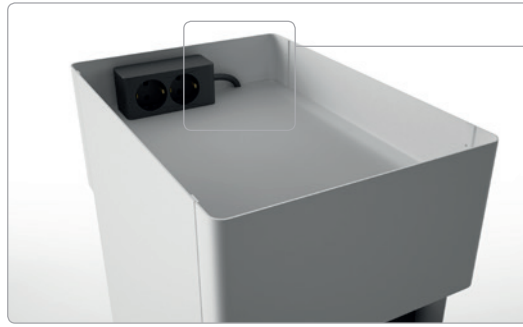
Hold high: 384x250x1023mm

15.11x9.84x40.28"

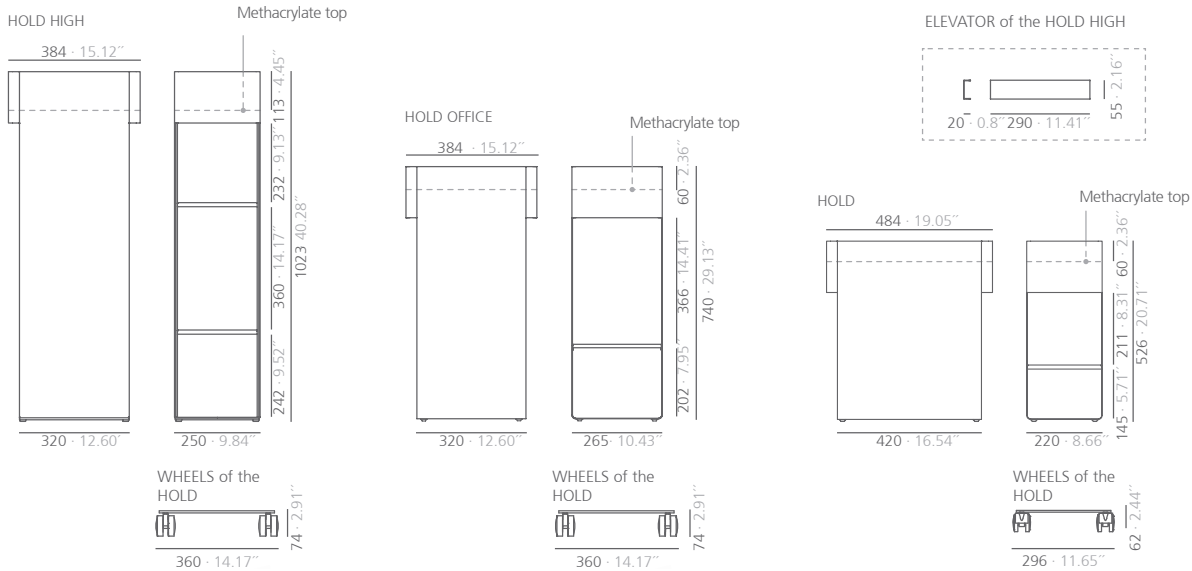
Hold office: 384x265x740mm

15.11x10.43x29.13"

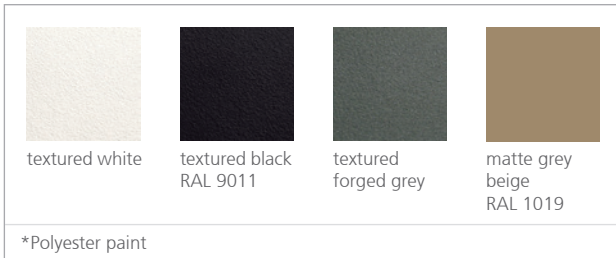
Hold: 484x220x526mm 19x8.66x20.71"



The methacrylate tops of the Hold High, Hold Office and Hold allows the cabling. It doesn't include power strip.



SI units: mm

Finishes:

For its use in humid zones, an additional primer process is required before the paint.
 For finishes and special dimensions please consult.

Maintenance:**-Polyester Paint:**

For dry dirt (dust), use a damp cloth. For greasy/oily stains (fingerprints), wipe with a sponge with water and dishwashing liquid. Rinse with a damp cloth. Avoid using products containing solvents and/or pure ethyl alcohol.

-Aluminium-metal-glass-melamine-plastic:

We recommend using normal cleaning products for delicate surfaces. Alcohol, solvents and abrasive agents must be avoided.