

MOTION sit-stand desks



FEATURES

- Easy desk control
- Individually adjustable height
- Height adjustment via Bluetooth remote control application
- Smart cable management solutions

TECHNICAL INFORMATION

Desktop

- 25 mm MFC (melamine) with 2 mm ABS edging;
- 74 mm gap between bench desktops.

Desktop types

- Plain desktop;
- Desktop with a cut-out for grommet and wire management;
- Desktop with a scallop for wire management;
- Sliding desktop for wire management.

Desk control button types

- BA, TA, TE - up and down drive;
- MA - up and down drive and 3 memory position;
- LA - up and down drive, 2 memory position, automatic drive on memory position, LED reminder, integrated Bluetooth.



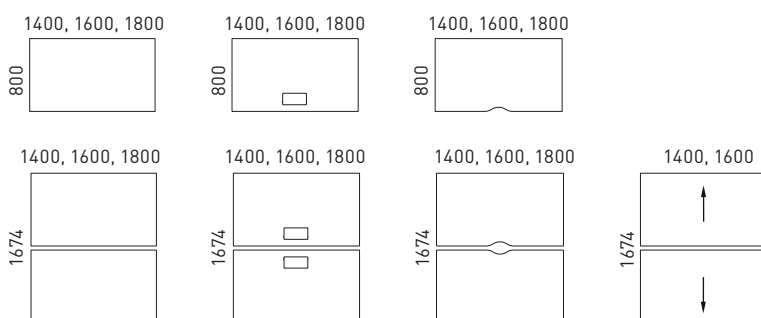
Frame

- L-shaped angle - 60x48x460mm;
- Metal tube - 40x20 mm;
- Powder coated metal, matches the colour of columns.

MATERIALS

- Melamine A: P (birch), T (beech), D1 (whitened oak), D2 (amber oak), U (walnut), M1 (white), N (grey);
- Melamine B (only for panel leg insert): M1 (white), J3 (black);
- Metal: E (white), A (black).

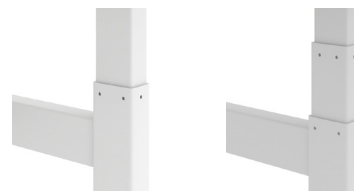
RANGE



Desk height: 700-1200 mm(2), 650 -1300 mm(3)

Lifting columns

- Types: two(2) or three(3) steps columns;
- Anticolision feature (only in three(3) steps columns);
- Two motors;
- Soft start and soft stop;
- Lifting speed: up to 38 mm / sec;
- Stroke length: DL05(2)- 500 mm, DL06(3)- 650 mm;
- Rectangular tube dimensions: 50x80 mm;
- Lifting capacity: up to 80 kg;
- Powder coated metal, matches the colour of frame;
- Column levellers, up to 10 mm;
- Side column covers made of MFC. Colour combinations are possible.



DL05(2)

DL06(3)

Electronic data power unit

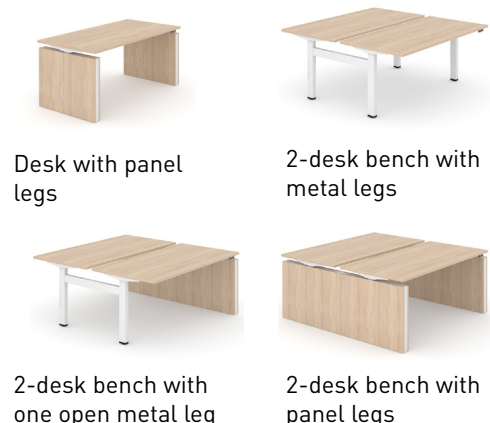
- Input: 110-240 V;
- Frequency: 50/60 Hz;
- Output: 18 V;
- Power Plug: EU, UK;
- Energy consumption: standby 0,01 W;
- Operating Cycle: 1 minute on, 9 minutes off.

Connecting component (DOZ008):

- Made of two metal components;
- Assembling without screws;
- Matches the colour of columns and frame;
- Distance between desktops 25 mm, distance between columns 85mm.

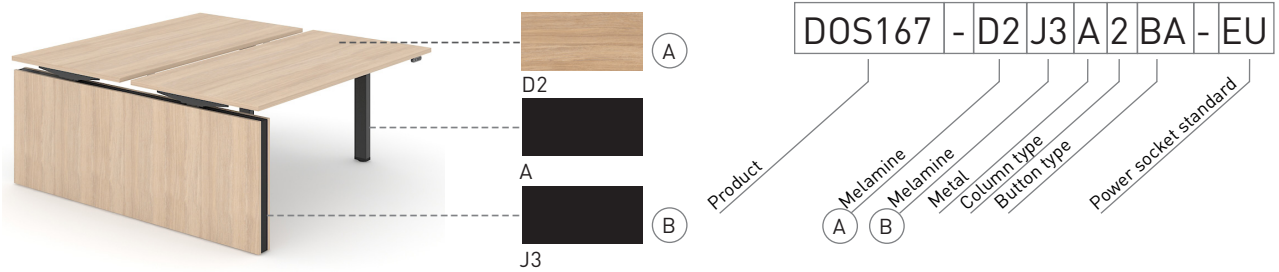
GUARANTEE

- 5 years



ORDERING EXAMPLE

Code structure



Must be ordered (for desktops with cut-out)



Metal grommet:
317x119 mm, H=27 mm

Optional



Acoustic screens



Cable trays



Power socket blocks



External power socket blocks



Cable ducts



Felt-lined metal drawers with lock



Set of desks connecting components



App control via Bluetooth (iOS, Android)