

MOVE executive desks

Design by Gediminas Juška | Lithuania



FEATURES

- Unique design by Gediminas Juška;
- Height adjustment: minimum height 735 mm, maximum 1300 mm;
- Fixed height – 740 mm;
- Smart cable management;
- Built-in 4 power slots – 230V/110V AC output and optional wireless charger.

TECHNICAL INFORMATION

Desktop

- 27 mm MDF covered in HPL with sloping edges painted same colour as desktop;
- Short sloping edges have 45° angle and the long ones 18° angle.

Desktop types

- Desktop with a star type cut-out for extraordinary grommet and wire management;
- Desktop with a star type cut-out for extraordinary grommet and wire management, with built in wireless charging dock.

Internal leg*

- 12 mm plywood covered in HPL with brushed stainless steel.

External leg

- 12 mm plywood covered in HPL (external leg side) and lacquered veneer (inner leg side);
- Black plastic height levelling feet, H=10 mm (+5 mm).

Lid under the desktop

- 12 mm plywood covered with lacquered veneer.

Wire management and power connectivity

- The electricity supply for the sit-stand desk comes via external leg;
- Unique star type cut-out with removable 12 mm HPL / veneer cover;
- Lid under the desktop with access to hidden power sockets and cable management;
- Built-in power sockets for desk and external devices. 2-3 slots for sit-stand desk or 3-4 slots for fixed height desk will be free to use depending on the desk configuration (with or without wireless charging dock).

Inner metal frame

- Metal tube – 50 x 20 mm;
- Powder coated metal, black colour by default.

Desk control button type – LA*

- Up and down drive;
- 2 memory positions;
- Automatic drive on memory position;
- LED reminder;
- Integrated Bluetooth.



Lifting columns*

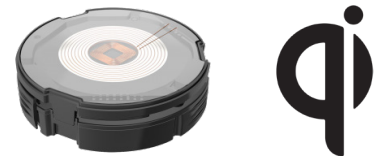
- Anti-collision feature;
- Two motors;
- Soft start and soft stop;
- Lifting speed: up to 38 mm / sec;
- Lifting capacity: up to 40 kg.

Control box*

- Input: 110-240V;
- Frequency: 50/60Hz;
- Output: 18V;
- Power Plug: EU, UK, CH, FR, US;
- Energy consumption: standby 0,01W;
- Operating Cycle: 1 minute on, 9 minutes off.

Fast Qi Wireless charger (built-in under the desktop):

- Output: 15W charging;
- Qi certified.



*Only for sit-stand desks.

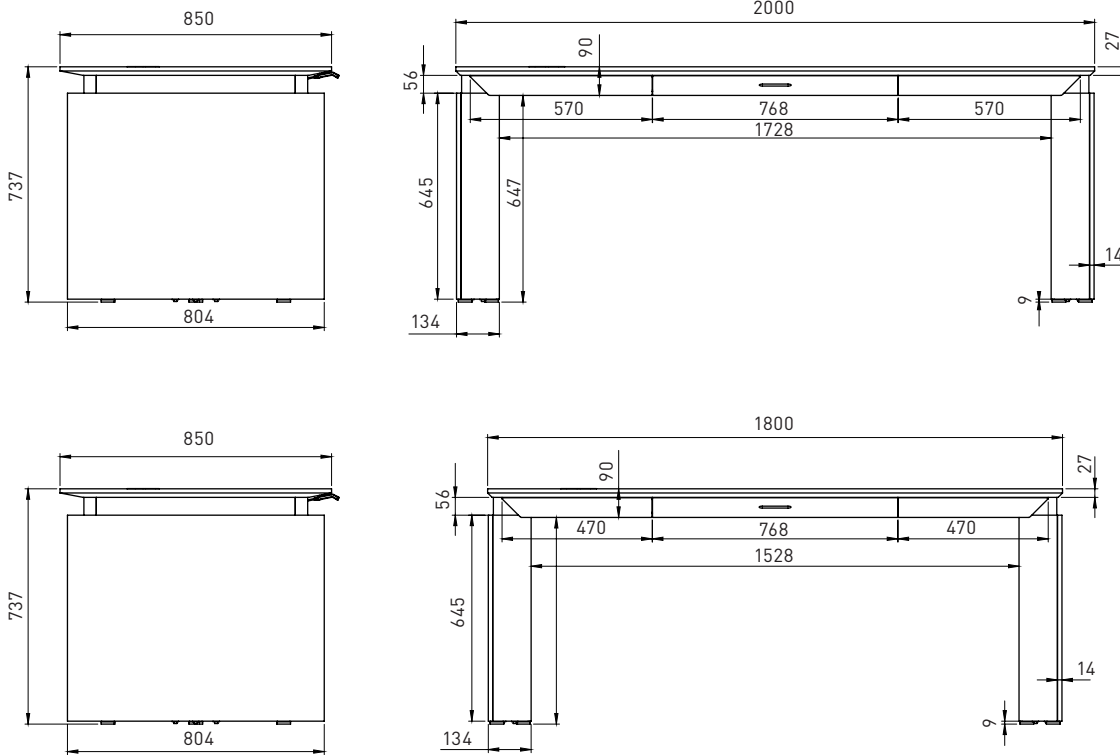
MATERIALS

- HPL Fenix: H16 (black), H17 (grey);
- Veneer: V1 (ash), A (oak), R (walnut).

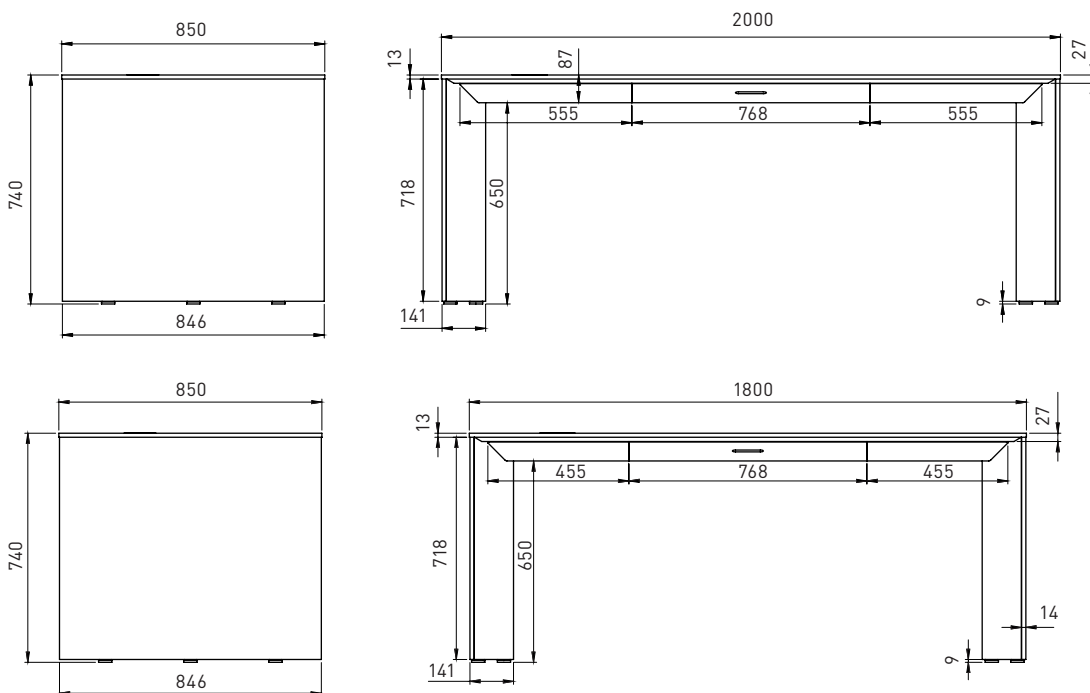
GUARANTEE

- 5 year for furniture
- 1 year for power sockets and wires

RANGE



Sit-stand desk with or without Qi Wireless charger



Fixed height desk with or without Qi Wireless charger

Optional



Right fixed pedestal



Left fixed pedestal