



Troy is a concept of remarkable simplicity and comfort that gives shape to practically endless possible variations, playing on the use of different materials, combinations and seat types. This vast and various assortment with over thousand possible combinations of materials (from plywood to polypropylene, to upholstered, etc.), structures (in steel tube or steel rod, with legs, on wheels, on star base, etc., also available with arms), and colours (from pastels to the brightest shades) offers

solutions for every possible need for both the home and the contract sector.



Designer in Magis



**Troy** — design Marcel Wanders, 2010/2014  
Technical Sheet

**Stacking chair**

Also available with arms.

**Materials:** frame in steel, chromed or painted in polyester powder.

Seat in beech plywood, in polypropylene or in polypropylene covered in fabric (Kvadrat "Divina"). Also available with front side covered in fabric (Kvadrat "Divina", "Steelcut Trio" or "Steelcut 2") or in leather. Versions for outdoor also available.

Magis logo is stamped on each product of our collection vouching for their originality.



**FATIGUE, LOAD AND IMPACT TESTS**

**Troy Chair (on legs)**

Seat and back static load test EN 15373:2007, L3 - severe  
Leg forward static load test EN 15373:2007, L3 - severe  
Leg sideways static load test EN 15373:2007, L2 - general  
Seat front edge fatigue test EN 15373:2007, L3 - severe  
Seat and back fatigue test EN 15373:2007, L3 - severe  
Non-domestic seating. Vertical load on back rest EN 15373:2007, L3 - severe  
Non-domestic seating. Safety requirements EN 15373:2007  
Stability EN 1022:2005  
Seat impact test EN 15373:2007, L3 - severe  
Back impact test EN 15373:2007, L3 - severe

**Troy Chair (on legs with arms)**

ANSI/BIFMA X5.1 - 2011  
Arm sideways static load test EN 16139:2013, L2 - extreme  
Arm downwards static load test EN 16139:2013, L2 - extreme

Arm fatigue test EN 16139:2013, L2 - extreme  
Stability EN 1022:2005  
Arm rest impact test EN 16139:2013, L2 - extreme

**Troy Chair (on sledge)**

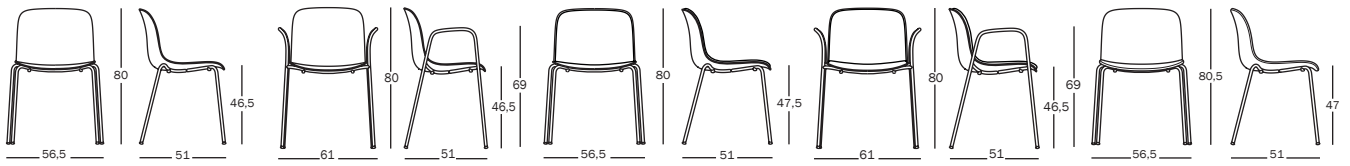
ANSI/BIFMA X5.1 - 2011  
Arm sideways static load test EN 16139:2013, L2 - extreme  
Seat and back static load test EN 16139:2013, L2 - extreme  
Leg forward static load test EN 16139:2013, L2 - extreme  
Leg sideways static load test EN 16139:2013, L2 - extreme  
Arm downwards static load test EN 16139:2013, L2 - extreme  
Seat front edge durability test EN 16139:2013, L2 - extreme  
Safety requirements EN 16139:2013, L2 - extreme  
Arm fatigue test EN 16139:2013, L2 - extreme  
Seat and back fatigue test EN 16139:2013, L2 - extreme  
Non-domestic seating. Vertical load on back rest EN 15373:2007  
Stability EN 1022:2005



[magisdesign.com](http://magisdesign.com)

The Kvadrat colour numbers are indicated in brackets next to the Magis inner colour number.  
The information included in this product sheet are based on the last data in our current  
pricelist. Magis reserves the right to modify the products without notice.

**Troy** — design Marcel Wanders, 2010/2014



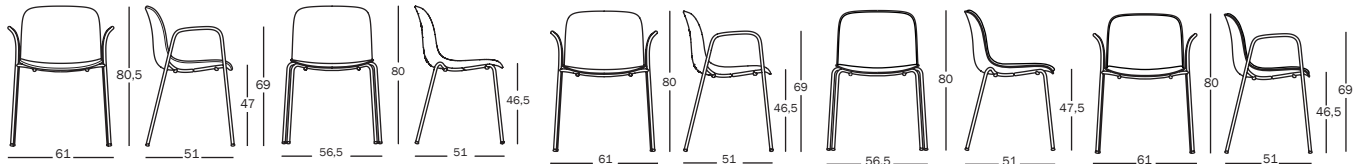
**Polypropylene**

**Polypropylene with arms**

**Polypropylene front cover**

**Polypropylene with arms front cover**

**Fully covered**



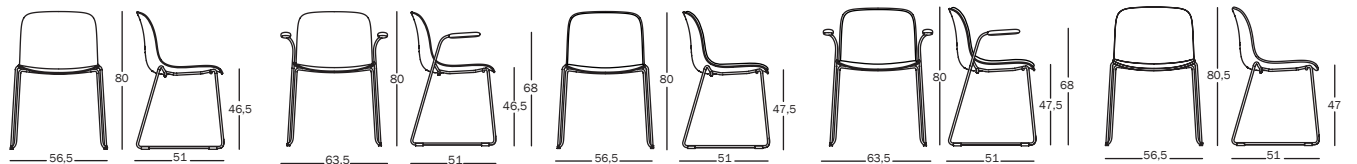
**Fully covered with arms**

**Plywood**

**Plywood with arms**

**Plywood front cover**

**Plywood with arms front cover**



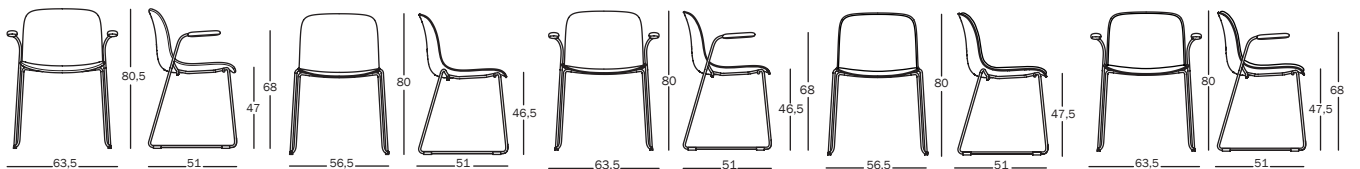
**Polypropylene**

**Polypropylene with arms**

**Polypropylene front cover**

**Polypropylene with arms front cover**

**Fully covered**



**Fully covered with arms**

**Plywood**

**Plywood with arms**

**Plywood front cover**

**Plywood with arms front cover**



**Troy** — design Marcel Wanders, 2013/2014  
Technical Sheet

Chair on 4 star base or on 4 star base and wheels

Also available with arms. A swivel version of the chair on 4 star base is also available.

**Materials:** frame in steel, chromed or painted in polyester powder. Seat in beech plywood in polypropylene or in polypropylene covered in fabric (Kvadrat "Divina"). Also available with front side covered in fabric (Kvadrat "Divina", "Steelcut Trio" or "Steelcut 2") or in leather. Versions for outdoor also available.

Magis logo is stamped on each product of our collection vouching for their originality



FATIGUE, LOAD AND IMPACT TESTS

Troy Chair (on 4 star)

Seat and back static load test EN 16139:2013, L2 - extreme  
Leg forward static load test EN 16139:2013, L2 - extreme  
Leg sideways static load test EN 16139:2013, L2 - extreme  
Vertical load on back rest EN 16139:2013, L2 - extreme  
Seat front edge durability test EN 16139:2013, L2 - extreme  
Information for use EN 16139:2013, L2 - extreme  
Safety requirements EN 16139:2013, L2 - extreme  
Seat and back fatigue test EN 16139:2013, L2 - extreme  
Stability EN 1022:2005  
Seat impact test EN 16139:2013, L2 - extreme  
Back impact test EN 16139:2013, L2 - extreme

Troy Chair (on 4 star, swivel)

Seat and back static load test EN 16139:2013, L2 - extreme  
Vertical load on back rest EN 16139:2013, L2 - extreme  
Seat front edge durability test EN 16139:2013, L2 - extreme  
Seat and back fatigue test EN 16139:2013, L2 - extreme  
Stability EN 1022:2005  
Seat impact test EN 16139:2013, L2 - extreme  
Back impact test EN 16139:2013, L2 - extreme

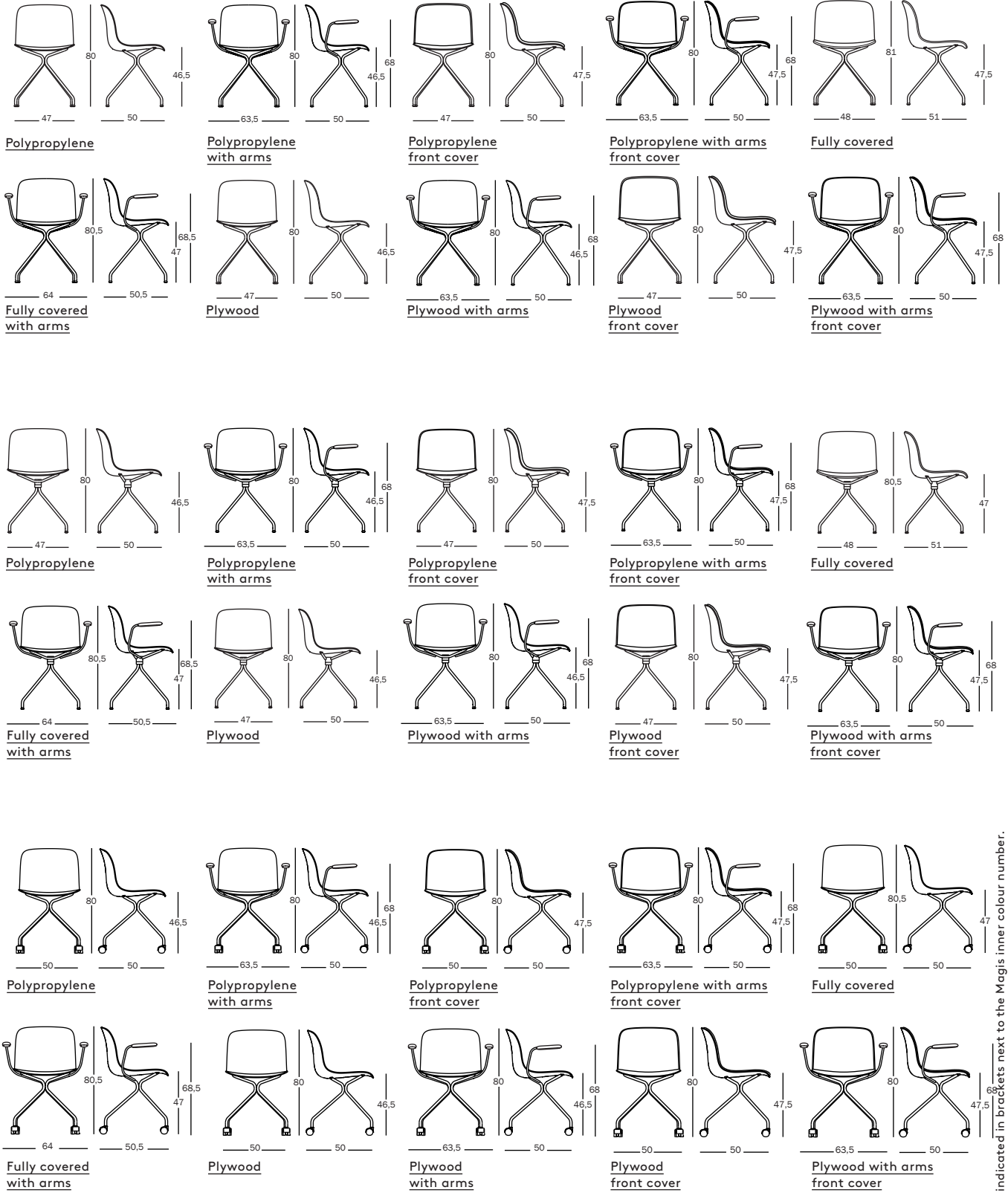


[magisdesign.com](http://magisdesign.com)

The Kvadrat colour numbers are indicated in brackets next to the Magis inner colour number. The information included in this product sheet are based on the last data in our current pricelist. Magis reserves the right to modify the products without notice.



**Troy** — design Marcel Wanders, 2013/2014



The Kvadrat colour numbers are indicated in brackets next to the Magis inner colour number. The information included in this product sheet are based on the last data in our current pricelist. Magis reserves the right to modify the products without notice.



**Troy** — design Marcel Wanders, 2012/2014  
 Technical Sheet

Swivel chair on 5 wheels

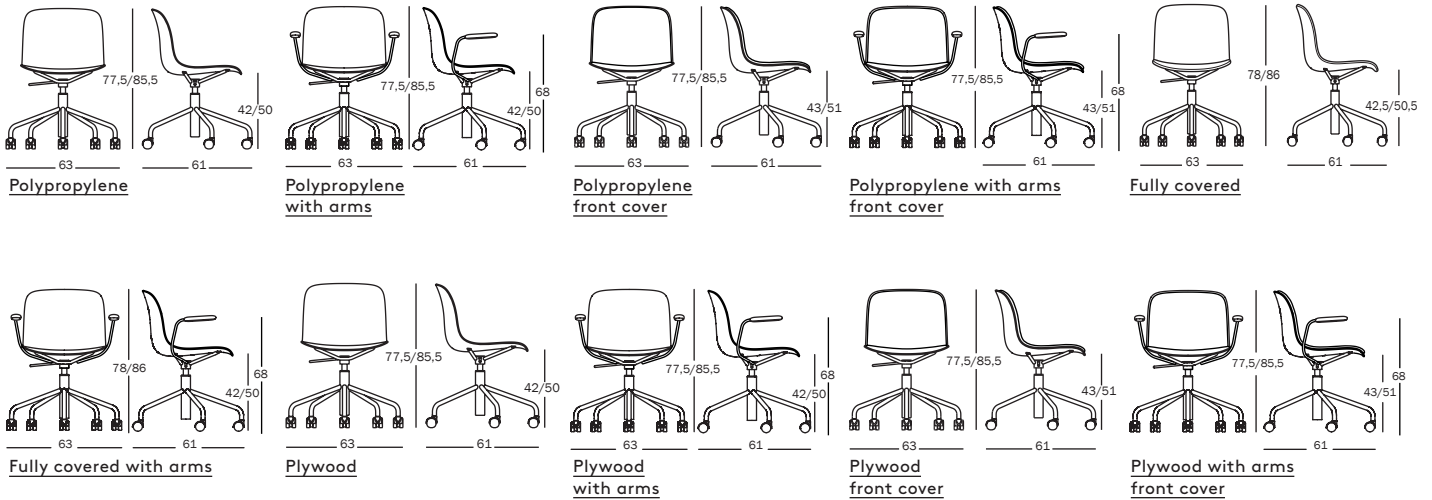
Also available with arms.

Adjustable in height with gas piston.

*Materials:* frame in steel tube, chromed or painted in polyester powder.

Seat in beech plywood, in polypropylene or in polypropylene covered in fabric (Kvadrat "Divina"). Also available with front side covered in fabric (Kvadrat "Divina", "Steelcut Trio" or "Steelcut 2") or in leather.

Magis logo is stamped on each product of our collection vouching for their originality.



FATIGUE, LOAD AND IMPACT TESTS

Troy Chair (on 5 wheels)

ANSI/BIFMA X5.1 - 2011

Seat and back static load test EN 15373:2007, L3 - severe

Seat front edge durability test EN 15373:2007, L3 - severe

Seat and back fatigue test EN 15373:2007, L3 - severe

Non-domestic seating. Vertical load on back rest EN

15373:2007, L3 - severe

Seat impact test EN 15373:2007, L3 - severe

Back impact test EN 15373:2007, L3 - severe



magisdesign.com

The Kvadrat colour numbers are indicated in brackets next to the Magis inner colour number. The information included in this product sheet are based on the last data in our current pricelist. Magis reserves the right to modify the products without notice.

**Troy** — design Marcel Wanders  
Finishes



**Polypropylene**  
Frame: Chromed  
Seat: Red 1483 C



**Polypropylene**  
Frame: Chromed  
Seat: White 1735 C



**Polypropylene**  
Frame: Chromed  
Seat: Black 1763 C



**Polypropylene**  
Frame: Red 5087  
Seat: Red 1483 C



**Polypropylene**  
Frame: White 5110  
Seat: White 1735 C



**Polypropylene**  
Frame: Black 5140  
Seat: Black 1763 C



**Fully covered**  
Frame: Chromed  
Seat: Red Mélange F-126 (531)



**Fully covered**  
Frame: Chromed  
Seat: Blue F-251 (773)



**Fully covered**  
Frame: Chromed  
Seat: Purple Mélange F-492 (581)



**Fully covered**  
Frame: Chromed  
Seat: Light Grey Mélange F-506 (120)



**Fully covered**  
Frame: Chromed  
Seat: Grey Mélange F-509 (170)



**Fully covered**  
Frame: Chromed  
Seat: Dark Grey Mélange F-512 (180)



**Fully covered**  
Frame: White 5110  
Seat: Red Mélange F-126 (531)



**Fully covered**  
Frame: White 5110  
Seat: Blue F-251 (773)



**Fully covered**  
Frame: White 5110  
Seat: Purple Mélange F-492 (581)



**Fully covered**  
Frame: White 5110  
Seat: Light Grey Mélange F-506 (120)



**Fully covered**  
Frame: White 5110  
Seat: Grey Mélange F-509 (170)



**Fully covered**  
Frame: White 5110  
Seat: Dark Grey Mélange F-512 (180)



**Fully covered**  
Frame: Black 5140  
Seat: Blue F-251 (773)



**Fully covered**  
Frame: Black 5140  
Seat: Purple Mélange F-492 (581)



Troy — design Marcel Wanders  
Finishes



Fully covered  
Frame: Black 5140  
Seat: Dark Grey Mélange  
F-512 (180)



Plywood  
Frame: Chromed  
Seat: Natural Beech



Plywood  
Frame: Chromed  
Seat: Bleached Beech



Plywood  
Frame: Chromed  
Seat: Stained Black Beech



Plywood  
Frame: White 5105  
Seat: Bleached Beech



Plywood  
Frame: Black 5140  
Seat: Stained Black Beech



Polypropylene  
Frame: Chromed  
Seat: Red 1483 C



Polypropylene  
Frame: Chromed  
Seat: White 1735 C



Polypropylene  
Frame: Chromed  
Seat: Black 1763 C



Polypropylene  
Frame: White 5110  
Seat: White 1735 C



Polypropylene  
Frame: Black 5140  
Seat: Black 1763 C



Fully covered  
Frame: Chromed  
Seat: Red Mélange F-126  
(531)



Fully covered  
Frame: Chromed  
Seat: Blue F-251 (773)



Fully covered  
Frame: Chromed  
Seat: Purple Mélange F-492  
(581)



Fully covered  
Frame: Chromed  
Seat: Light Grey Mélange  
F-506 (120)



Fully covered  
Frame: Chromed  
Seat: Grey Mélange F-509  
(170)



Fully covered  
Frame: Chromed  
Seat: Dark Grey Mélange  
F-512 (180)



Fully covered  
Frame: White 5110  
Seat: Red Mélange F-126  
(531)



Fully covered  
Frame: White 5110  
Seat: Blue F-251 (773)



Fully covered  
Frame: White 5110  
Seat: Purple Mélange F-492  
(581)



**Troy** — design Marcel Wanders  
Finishes



Fully covered  
Frame: White 5110  
Seat: Light Grey Mélange  
F-506 (120)



Fully covered  
Frame: White 5110  
Seat: Grey Mélange F-509  
(170)



Fully covered  
Frame: White 5110  
Seat: Dark Grey Mélange  
F-512 (180)



Fully covered  
Frame: Black 5140  
Seat: Blue F-251 (773)



Fully covered  
Frame: Black 5140  
Seat: Purple Mélange F-492  
(581)



Fully covered  
Frame: White 5110  
Seat: Dark Grey Mélange  
F-512 (180)



Plywood  
Frame: Chromed  
Seat: Natural Beech



Plywood  
Frame: Chromed  
Seat: Bleached Beech



Plywood  
Frame: Chromed  
Seat: Stained Black Beech



Plywood  
Frame: White 5110  
Seat: Bleached Beech



Plywood  
Frame: Black 5140  
Seat: Stained Black beech



Polypropylene  
Frame: Chromed  
Seat: Red 1483 C



Polypropylene  
Frame: Chromed  
Seat: White 1735 C



Polypropylene  
Frame: Chromed  
Seat: Black 1763 C



Polypropylene  
Frame: White 5110  
Seat: White 1735 C

Swivel version not for outdoor



Polypropylene  
Frame: Black 5140  
Seat: Black 1763 C  
Swivel version not for outdoor



Fully covered  
Frame: Chromed  
Seat: Red Mélange F-126  
(531)



Fully covered  
Frame: Chromed  
Seat: Blue F-251 (773)



Fully covered  
Frame: Chromed  
Seat: Purple Mélange F-492  
(581)



Fully covered  
Frame: Chromed  
Seat: Light Grey Mélange  
F-506 (120)



magisdesign.com

The Kvadrat colour numbers are indicated in brackets next to the Magis inner colour number. The information included in this product sheet are based on the last data in our current pricelist. Magis reserves the right to modify the products without notice.



**Troy** — design Marcel Wanders  
Finishes



Fully covered  
Frame: Chromed  
Seat: Grey Mélange F-509  
(170)



Fully covered  
Frame: Chromed  
Seat: Dark Grey Mélange  
F-512 (180)



Fully covered  
Frame: White 5110  
Seat: Red Mélange F-126  
(531)



Fully covered  
Frame: White 5110  
Seat: Blue F-251 (773)



Fully covered  
Frame: White 5110  
Seat: Purple Mélange F-492  
(581)



Fully covered  
Frame: White 5110  
Seat: Light Grey Mélange  
F-506 (120)



Fully covered  
Frame: White 5110  
Seat: Grey Mélange F-509  
(170)



Fully covered  
Frame: White 5110  
Seat: Dark Grey Mélange  
F-512 (180)



Fully covered  
Frame: Black 5140  
Seat: Blue F-251 (773)



Fully covered  
Frame: Black 5140  
Seat: Purple Mélange F-492  
(581)



Fully covered  
Frame: Black 5140  
Seat: Dark Grey Mélange  
F-512 (180)



Plywood  
Frame: Chromed  
Seat: Natural Beech



Plywood  
Frame: Chromed  
Seat: Bleached Beech



Plywood  
Frame: Chromed  
Seat: Stained Black Beech



Plywood  
Frame: White 5110  
Seat: Bleached Beech



Plywood  
Frame: Black 5140  
Seat: Stained Black Beech



Polypropylene  
Frame: Chromed  
Seat: Red 1483 C



Polypropylene  
Frame: Chromed  
Seat: White 1735 C



Polypropylene  
Frame: Chromed  
Seat: Black 1763 C



Polypropylene  
Frame: White 5110  
Seat: White 1735 C



The Kvadrat colour numbers are indicated in brackets next to the Magis inner colour number. The information included in this product sheet are based on the last data in our current pricelist. Magis reserves the right to modify the products without notice.

Troy — design Marcel Wanders  
Finishes



Polypropylene  
Frame: Black 5140  
Seat: Black 1763 C



Fully covered  
Frame: Chromed  
Seat: Red Mélange F-126 (531)



Fully covered  
Frame: Chromed  
Seat: Blue F-251 (773)



Fully covered  
Frame: Chromed  
Seat: Purple Mélange F-492 (581)



Fully covered  
Frame: Chromed  
Seat: Light Grey Mélange F-506 (120)



Fully covered  
Frame: Chromed  
Seat: Grey Mélange F-509 (170)



Fully covered  
Frame: Chromed  
Seat: Dark Grey Mélange F-512 (180)



Fully covered  
Frame: White 5110  
Seat: Red Mélange F-126 (531)



Fully covered  
Frame: White 5110  
Seat: Blue F-251 (773)



Fully covered  
Frame: White 5110  
Seat: Purple Mélange F-492 (581)



Fully covered  
Frame: White 5110  
Seat: Light Grey Mélange F-506 (120)



Fully covered  
Frame: White 5110  
Seat: Grey Mélange F-509 (170)



Fully covered  
Frame: White 5110  
Seat: Dark Grey Mélange F-512 (180)



Fully covered  
Frame: Black 5140  
Seat: Blue F-251 (773)



Fully covered  
Frame: Black 5140  
Seat: Purple Mélange F-492 (581)



Fully covered  
Frame: Black 5140  
Seat: Dark Grey Mélange F-512 (180)



Plywood  
Frame: Chromed  
Seat: Natural Beech



Plywood  
Frame: Chromed  
Seat: Bleached Beech



Plywood  
Frame: Chromed  
Seat: Stained Black Beech



Plywood  
Frame: White 5110  
Seat: Bleached Beech



Troy — design Marcel Wanders  
Finishes



Plywood  
Frame: Black 5140  
Seat: Stained Black Beech



Polypropylene  
Frame: Chromed  
Seat: Red 1483 C



Polypropylene  
Frame: Chromed  
Seat: White 1735 C



Polypropylene  
Frame: Chromed  
Seat: Black 1763 C



Polypropylene  
Frame: White 5110  
Seat: White 1735 C



Polypropylene  
Frame: Black 5140  
Seat: Black 1763 C



Fully covered  
Frame: Chromed  
Seat: Red Mélange F-126 (531)



Fully covered  
Frame: Chromed  
Seat: Blue F-251 (773)



Fully covered  
Frame: Chromed  
Seat: Purple Mélange F-492 (581)



Fully covered  
Frame: Chromed  
Seat: Light Grey Mélange F-506 (120)



Fully covered  
Frame: Chromed  
Seat: Grey Mélange F-509 (170)



Fully covered  
Frame: Chromed  
Seat: Dark Grey Mélange F-512 (180)



Fully covered  
Frame: White 5110  
Seat: Red Mélange F-126 (531)



Fully covered  
Frame: White 5110  
Seat: Blue F-251 (773)



Fully covered  
Frame: White 5110  
Seat: Purple Mélange F-492 (581)



Fully covered  
Frame: White 5110  
Seat: Light Grey Mélange F-506 (120)



Fully covered  
Frame: White 5110  
Seat: Grey Mélange F-509 (170)



Fully covered  
Frame: White 5110  
Seat: Dark Grey Mélange F-512 (180)



Fully covered  
Frame: Black 5140  
Seat: Blue F-251 (773)



Fully covered  
Frame: Black 5140  
Seat: Purple Mélange F-492 (581)



Troy — design Marcel Wanders  
Finishes



---

Fully covered  
Frame: Black 5140  
Seat: Dark Grey Mélange  
F-512 (180)



---

Plywood  
Frame: Chromed  
Seat: Natural Beech



---

Plywood  
Frame: Chromed  
Seat: Bleached Beech



---

Plywood  
Frame: Chromed  
Seat: Stained Black Beech



---

Plywood  
Frame: White 5110  
Seat: Bleached Beech



---

Plywood  
Frame: Black 5140  
Seat: Stained Black Beech



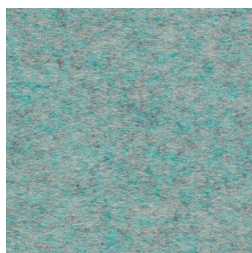
Troy — design Marcel Wanders  
Front cover

All versions are available with front side covered in fabric or in leather (except for the fully covered version).

Kvadrat Divina  
→



F-095 Pink (613)  
Divina MD



F-224 Light Blue (813)  
Divina MD

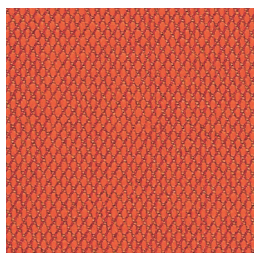


F-356 Green (943)  
Divina MD

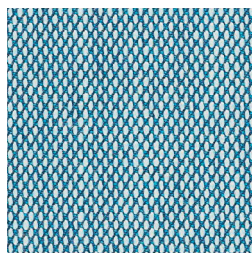


F-512 Dark Grey  
Mélange (180)  
Divina Mélange

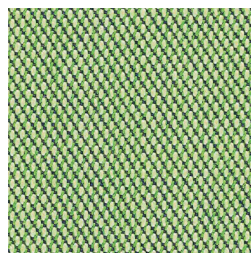
Kvadrat Steelcut Trio  
→



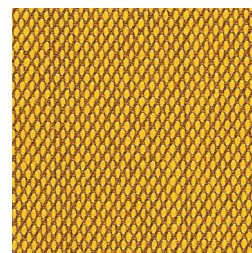
F-088 Orange (533)



F-225 Light Blue (733)



F-357 Green (933)



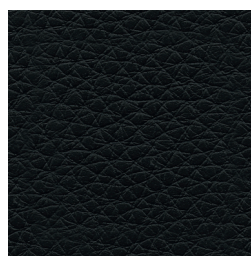
F-578 Yellow (453)

Kvadrat Steelcut 2  
→



F-767 Black (190)

Magis Winter  
→



L-0795 Black



magisdesign.com

The Kvadrat colour numbers are indicated in brackets next to the Magis inner colour number. The information included in this product sheet are based on the last data in our current pricelist. Magis reserves the right to modify the products without notice.