

## Uni-Ka 604M



### UNI-KA COLLECTION:

Uni-ka 594, Uni-Ka 594M, Uni-Ka 595, Uni-Ka 595M, Uni-Ka 596, Uni-Ka 596M, Uni-Ka 597-DP, Uni-Ka 597-DR, Uni-Ka 597M-DP, Uni-Ka 597M-DR, Uni-Ka 598, Uni-Ka 598M, Uni-Ka 599M, Uni-Ka 599, Uni-Ka 600, Uni-Ka 600M, Uni-Ka 601, Uni-Ka 601M, Uni-Ka 604, Uni-Ka 604M,



Lounge armchair with steel frame, 4 legs. Upholstered polypropylene shell.

**WEIGHT**

9,25 Kg

**PACK**0,31 m<sup>3</sup>**PIECES PER BOX**

1

## FINISHES SEATING

### TE FABRICS



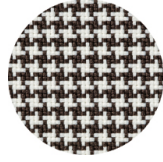
Citadel Camira  
+ 16 colours



Inca Abitex  
+ 15 colours



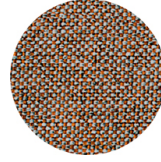
Medley Gabriel  
+ 14 colours



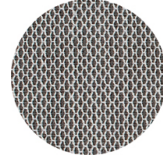
Go-Couture Gabriel  
+ 8 colours



Crazy Flukso  
+ 7 colours



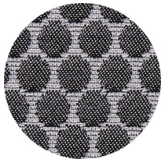
Rivet Camira  
+ 12 colours



Criss Cross Gabriel  
+ 19 colours



Valencia Spradling  
+ 17 colours



Bubble Flukso  
+ 9 colours



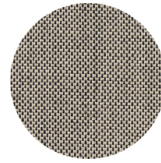
Europost 2 Gabriel  
+ 16 colours



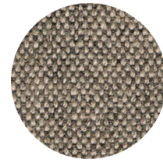
Fame Gabriel  
+ 23 colours



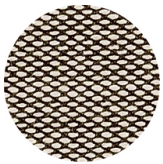
Parotega NF  
Skai Hornschuch  
+ 8 colours



Balta Vescom  
+ 12 colours



Main line flax Camira  
+ 13 colours

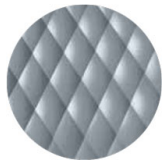


Steelcut trio 3 Kvadrat  
+ 20 colours

### PP POLYPROPYLENE



RAL 9016 Traffic white  
≡



RAL 7000 Squirrel grey  
≡



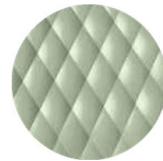
PANTONE 549 C Dusty  
blue  
≡



PANTONE 411 C Clay  
≡



NCS S4005-Y50R  
Turtle-dove  
≡



NCS S3010-G30Y  
Pistachio  
≡



RAL 9005 Jet black  
≡



RAL 7016 Anthracite grey  
≡



NCS S2060-Y90R  
Coral red  
≡

## FRAMES

### AC STEEL



RAL 9005  
VR Jet black  
☀



RAL 9005  
VR Matt Jet Black  
☀



RAL 9016  
VR Traffic white  
☀



RAL 9010  
VR Pure white  
☀



RAL 9006  
VR White aluminium  
☀



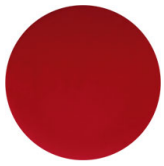
PANTONE 402 C  
VR Turtle-dove  
☀



RAL 7016  
VR Anthracite grey  
☀



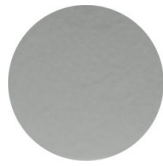
VR Pewter  
☀



RAL 3003  
VR Ruby red  
☀



RAL 8017  
VR Chocolate brown  
☀



RAL 7037  
VR Matt Dusty grey  
☀



VR Rough metallic  
bronze  
☀



CR Chrome