

## Mel low table 50cm

by Ramón Esteve

Mel explores the avant-garde from the everyday: enveloping shapes, tubular gestures, and a presence that lingers in the eye. With a sculptural and iconic character, its gentle, sinuous curves generate a strong visual identity while evoking the memory of wicker furniture—reinterpreted through a continuous, tubular, contemporary language.

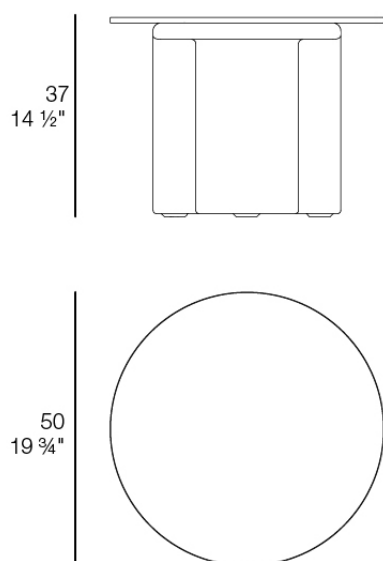


## Info

---

### Description

Weight: 6.67 Kg



MEL Mesa Centro D50  
MEL Low Table D19 3/4"  
Ref. 66502

## Finishes

---

### finishes

---

Basic

Ref. 66502



white 2001



black 2002



ecru 2003



tortora 2004



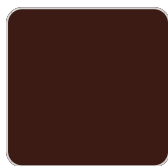
gray 2005



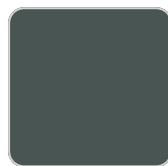
anthracite 2006



brown 2008



garnet 2015



green 2016



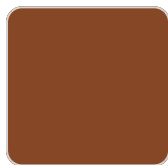
cream 2017



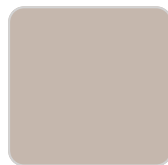
blue 2018



camel 2020



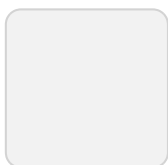
clay 2022



ecru granite



cream granite



ice 2101

Matt Polyethylene

Lacquered

Ref. 66502F



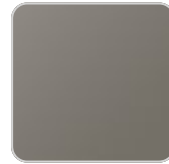
white 3101



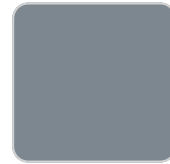
black 3102



ecru 3103



tortora 3104



gray 3105



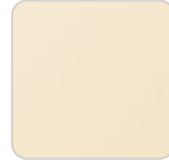
anthracite 3106



garnet 3113



green 3116



cream 3117



blue 3118



camel 3120



clay



brown 3125

## Lacquered Polyethylene

## tabletops

---

### HPL Solid Core Top

Ref. 66502TBL



green stone



ecru stone



smoked



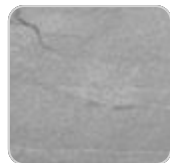
tortora stone



black stone



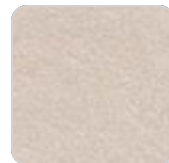
walnut



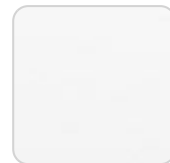
gray stone



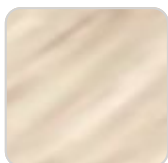
white stone



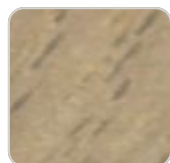
cream stone



white (white edge)



oak1



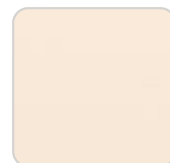
oak2



ecru



tortora



cream

# VONDON



camel



clay



garnet



brown



green



blue



gray



anthracite



ocean

## Ambients

---



