

Fusta chair

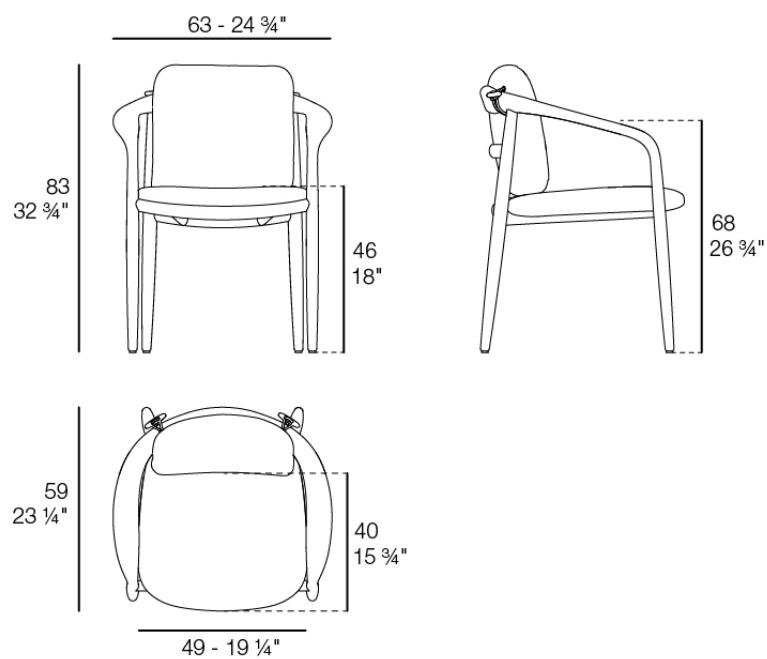
by Ramón Esteve

Fusta is a contemporary reinterpretation of wood. It doesn't imitate it — it translates it. It takes its warmth, its rhythm, and its connection to the landscape and carries them into a modern language designed to endure outdoors.



Info

Description

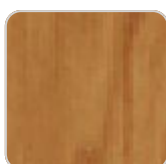


FUSTA Silla
FUSTA Chair
Ref. 54873

Finishes

finishes

Teak Wood
Ref. 54873



natural teak

TEAK WOOD

fabric

GETARIA
Ref. 54873CO



niord 10015 getaria



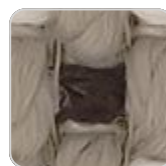
brown 10050 getaria



moon 10040 getaria



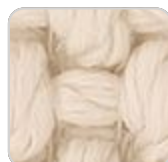
tortora 10048 getaria



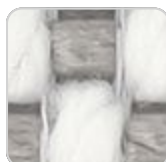
terra 10039 getaria



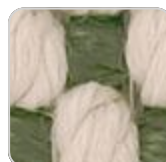
granite 10008 getaria



cream 10047 getaria



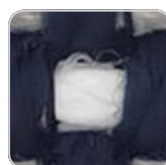
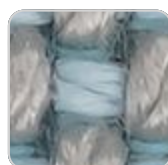
iceberg 10037 getaria



oasis 10007 getaria



garnet 10046 getaria



camel 10033 getaria



pearl 10006 getaria



black 10044 getaria



gallant 10025 getaria



oversea 10002 getaria



anthracite 10043
getaria



blue 10024 getaria



ocean 10023 getaria



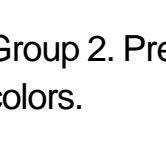
gray 10042 getaria



emerald 10016
getaria



white 10041 getaria



Group 2. Premium high density 100% acrylic fabric, available in a wide range of colors.

BAIONA Ref. 54873CO



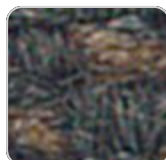
brown 10108 baiona



garnet 10107 baiona



clay 10106 baiona



black 10114 baiona



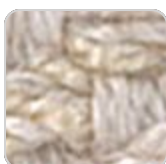
gray 10113 baiona



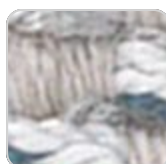
camel 10104 baiona



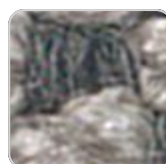
blue 10112 baiona



cream 10103 baiona



ocean 10111 baiona



tortora 10102 baiona



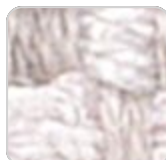
green 10110 baiona



ecru 10101 baiona



jade 10109 baiona



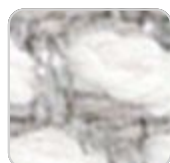
white 10100 baiona

Group 1C. High density 100% acrylic fabric, which provides a solid feel. It has an irregular pattern that adds a handcrafted touch.

CALELLA Ref. 54873CO



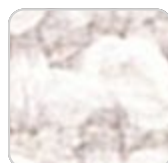
anthracite 10129
calella



ecru 10121 calella



gray 10128 calella



white 10120 calella



blue 10127 calella



jade 10126 calella



clay 10125 calella



mustard 10124 calella



cream 10123 calella



tortora 10122 calella

Group 1C. PFAS-free 100% acrylic fabric with a rich and unusual texture and an exceptional softness, which enhances the comfort of the furniture.

FISTERRA Ref. 54873CO



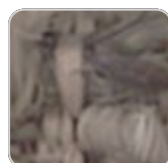
cream 10132 fisterra



white 10130 fisterra



ecru 10131 fisterra



tortora 10135 fisterra



camel 10134 fisterra



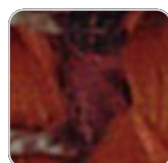
mustard 10133
fisterra



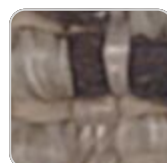
peach 10146 fisterra



clay 10137 fisterra



garnet 10138 fisterra



brown 10136 fisterra



olive 10145 fisterra



jade 10139 fisterra



green 10140 fisterra



ocean 10141 fisterra



blue 10142 fisterra



gray 10143 fisterra



anthracite 10144
fisterra



black 10147 fisterra

Group 1C. 100% acrylic fabric, with a distinctive irregular marbled pattern and a soft feel.

PORTONOVO

Ref. 54873CO



gray 10163 portonovo



mustard 10155
portonovo



blue 10162 portonovo



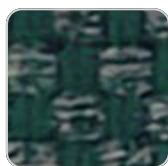
camel 10154
portonovo



ocean 10161
portonovo



cream 10153
portonovo



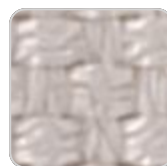
green 10160
portonovo



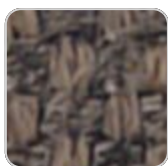
tortora 10152
portonovo



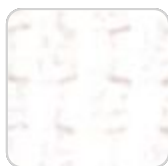
jade 10159 portonovo



ecru 10151 portonovo



brown 10158
portonovo



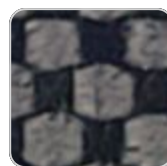
white 10150
portonovo



black 10165
portonovo



garnet 10157
portonovo



anthracite 10164
portonovo



clay 10156 portonovo

Group 1A. 100% acrylic fabric, with a flat and simple design, which adapts to any decorative style.

ZUMAIA

Ref. 54873CO



black 10205 zumaia



green 10204 zumaia



blue 10203 zumaia



garnet 10202 zumaia



cream 10201 zumaia



white 10200 zumaia

Group 2. Elegant 100% acrylic fabric, with a soft terry, pleasant to the touch and a unique color combination.

SUANCES

Ref. 54873CO



black 10315 suances



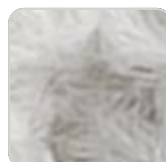
garnet 10307 suances



anthracite 10314
suances



clay 10306 suances



gray 10313 suances



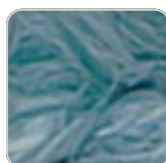
mustard 10305
suances



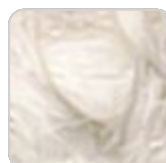
blue 10312 suances



camel 10304 suances



ocean 10311 suances



cream 10303 suances



green 10310 suances



tortora 10302 suances



jade 10309 suances



ecru 10301 suances



olive 10317 suances



white 10300 suances



peach 10316 suances



brown 10308 suances

Group 2. Bocol fabric, which stands out for its warmth and softness, with matching colors that add depth and elegance.

RIBADEO

Ref. 54873CO



gray 10333 ribadeo



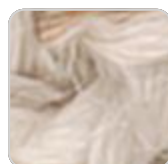
mustard 10325
ribadeo



camel 10324 ribadeo



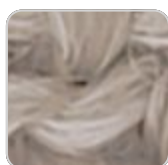
blue 10332 ribadeo



cream 10323 ribadeo



ocean 10331 ribadeo



tortora 10322 ribadeo



green 10330 ribadeo



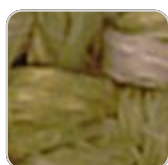
mint 10337 ribadeo



jade 10329 ribadeo



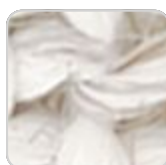
ecru 10321 ribadeo



olive 10336 ribadeo



brown 10328 ribadeo



white 10320 ribadeo



peach 10335 ribadeo



garnet 10327 ribadeo



anthracite 10334
ribadeo



clay 10326 ribadeo

Group 2. Soft fabric with marbled yarns of different thicknesses that create a rich and visually interesting texture. Its Linen look adds a touch of natural style.

LOURO

Ref. 54873CO



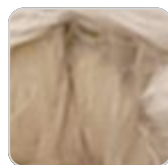
gray 10353 louro



mustard 10345 louro



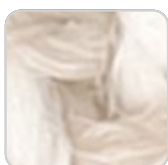
blue 10352 louro



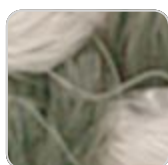
camel 10344 louro



ocean 10351 louro



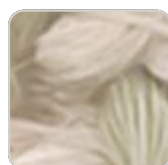
cream 10343 louro



green 10350 louro



tortora 10342 louro



jade 10349 louro



brown 10348 louro



olive 10356 louro



peach 10355 louro



garnet 10347 louro



anthracite 10354 louro



clay 10346 louro

Group 2. Soft and versatile fabric, which presents a neutral base color that makes it easy to combine with different colors and fabrics.

ALTEA

Ref. 54873CO



tortora 1102 altea



white 1100 altea



camel 1120 altea



clay 1122 altea



garnet 1106 altea



brown 1104 altea



jade 1125 altea



ocean 1123 altea



gray 1101 altea



anthracite 1124 altea



black 1105 altea

Group 1A. Soft outdoor fabric with leather-like texture.

AROUSA

Ref. 54873CO



tortora 1209 arousa



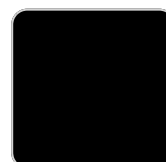
camel 1230 arousa



clay 1231 arousa



brown 1214 arousa



jade 1235 arousa



gray 1208 arousa



anthracite 1210
arousa

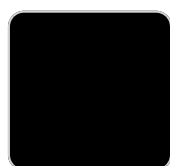
Group 1B. Soft outdoor fabric with shiny finish.

DRALON

Ref. 54873CO



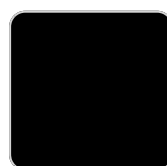
black



ecru



white



bronze

Indoor/outdoor Acrylic fabric. Resistant to UV, salinity and the elements.

Ambients

