

Madison upholstered

by Eugeni Quitllet

Eugeni Quitllet gives life to Madison, a chair born of the inexhaustible pulse of Manhattan. Inspired by the atmosphere of a New York avenue that combines history and modernity under a single heartbeat, celebrating the changing attitude of the great city and its unmistakable lifestyle.



Info

Description

Madison Upholstered, designed by Eugeni Quitllet, incorporates padding that enhances comfort without sacrificing the lightness of its resin structure. Its design, created for both outdoor and indoor use, employs fabrics prepared to resist diverse

weather conditions. The ergonomic backrest embraces the user, while the soft upholstery adds a touch of warmth. Thus, it combines the cosmopolitan imprint of the collection with superior comfort and a versatile style.

Weight: 4.38 Kg



Finishes

finishes

Basic

Ref. 65063



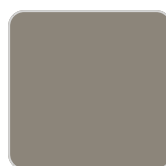
white



black



cream



tortora

Available in various colors

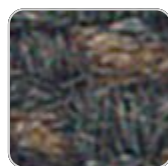
fabric

BAIONA

Ref. 65063CO



clay 10106 baiona



black 10114 baiona



camel 10104 baiona



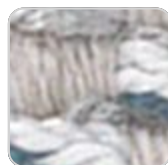
gray 10113 baiona



blue 10112 baiona



cream 10103 baiona



ocean 10111 baiona



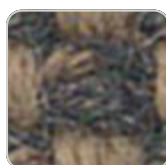
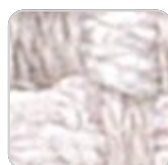
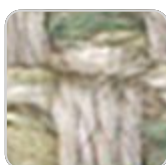
tortora 10102 baiona



green 10110 baiona



ecru 10101 baiona



jade 10109 baiona

white 10100 baiona

brown 10108 baiona

garnet 10107 baiona

Group 1C. High density 100% acrylic fabric, which provides a solid feel. It has an irregular pattern that adds a handcrafted touch.

CALELLA

Ref. 65063CO



blue 10127 calella



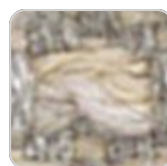
jade 10126 calella



clay 10125 calella



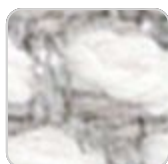
mustard 10124 calella



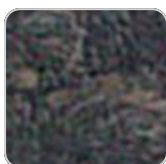
cream 10123 calella



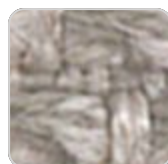
tortora 10122 calella



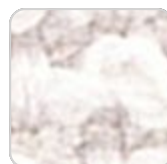
ecru 10121 calella



anthracite 10129
calella



gray 10128 calella



white 10120 calella

Group 1C. PFAS-free 100% acrylic fabric with a rich and unusual texture and an exceptional softness, which enhances the comfort of the furniture.

FISTERRA

Ref. 65063CO



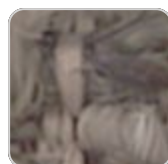
cream 10132 fisterra



white 10130 fisterra



ecru 10131 fisterra



tortora 10135 fisterra



camel 10134 fisterra



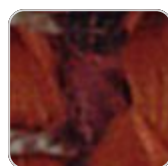
mustard 10133
fisterra



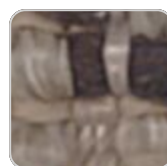
peach 10146 fisterra



clay 10137 fisterra



garnet 10138 fisterra



brown 10136 fisterra



olive 10145 fisterra



jade 10139 fisterra



green 10140 fisterra



ocean 10141 fisterra



blue 10142 fisterra



gray 10143 fisterra



anthracite 10144
fisterra



black 10147 fisterra

Group 1C. 100% acrylic fabric, with a distinctive irregular marbled pattern and a soft feel.

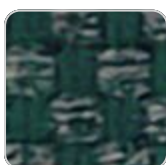
PORTONOVO Ref. 65063CO



ocean 10161
portonovo



cream 10153
portonovo



green 10160
portonovo



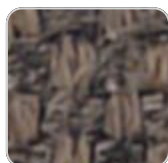
tortora 10152
portonovo



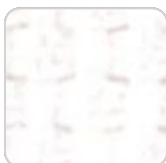
jade 10159 portonovo



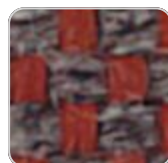
ecru 10151 portonovo



brown 10158
portonovo



white 10150
portonovo



garnet 10157
portonovo



black 10165
portonovo



anthracite 10164
portonovo



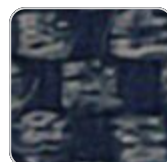
clay 10156 portonovo



gray 10163 portonovo



mustard 10155
portonovo



blue 10162 portonovo



camel 10154
portonovo

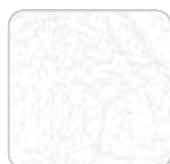
Group 1A. 100% acrylic fabric, with a flat and simple design, which adapts to any decorative style.

ALTEA

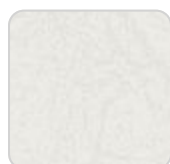
Ref. 65063CO



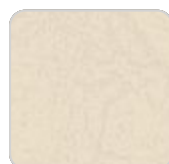
tortora 1102 altea



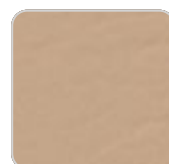
white 1100 altea



ecru 1111 altea



cream 1103 altea



camel 1120 altea



clay 1122 altea



garnet 1106 altea



brown 1104 altea



jade 1125 altea



ocean 1123 altea



blue 1114 altea



gray 1101 altea



anthracite 1124 altea



black 1105 altea

Group 1A. Soft outdoor fabric with leather-like texture.

AROUSA

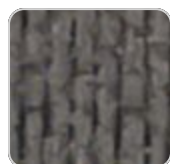
Ref. 65063CO



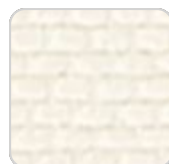
ecru 1221 arousa



white 1219 arousa



tortora 1209 arousa



cream 1220 arousa



camel 1230 arousa



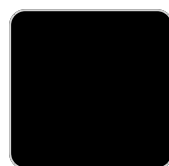
clay 1231 arousa



garnet 1223 arousa



brown 1214 arousa



jade 1235 arousa



blue 1222 arousa



gray 1208 arousa



anthracite 1210
arousa

Group 1B. Soft outdoor fabric with shiny finish.

