



Calla S M_T PP Chair

design Fabrizio Batoni, 2019

Calla stackable chair with sled base in steel. Polypropylene seat. The version with painted base in matt finish and polypropylene seat is suitable for outdoor use. Optional: cushion covered in leather, faux leather or fabric, for indoor use only. The chair can be equipped with a hook to create rows of chairs aligned perfectly.

Essential in small spaces, surprisingly lively in conference rooms with the seats connected by the spacer hook.

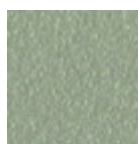


Colors and Materials

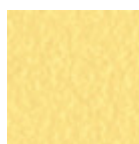
Structure



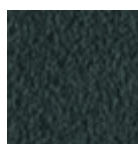
White Steel



Sand Steel



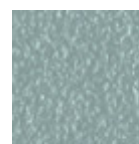
Pastel Yellow Steel



Grafite Steel



Black Steel



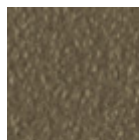
Light blue steel



Ocean Blue Steel



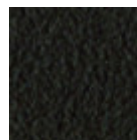
Bronze Steel



Fango Steel



Light Grey Steel



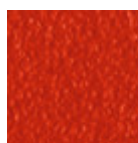
Brown Steel



Ocher Steel



Facepowder Pink Steel



Red steel



Sage Green Steel

Coating



Polipropilene

9 Colors

Extensions



Bubble Fabric
14 Colors



Carabù Fabric
15 Colors



Cotton Club Fabric
13 Colors



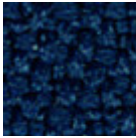
Fenix Wool Fabric
13 Colors



Hot Fabric
14 Colors



Main Line Flax Fabric
16 Colors



Mirage Fabric
6 Colors



Scubidù Fabric
10 Colors



Second Fabric
11 Colors



Visual Fabric
11 Colors



Velvet Superb
15 Colors



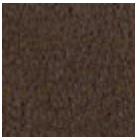
Secret Faux Leather
22 Colors



Vintage Faux Leather
12 Colors



Fiore Leather
18 Colors



Vintage Leather
4 Colors

Dimensions

Dimensions

Volumetric Details

Weight 6 Kg
Volume 0.15 mc
Package 1
Stackable 4 pieces

Image not found or type unknown

	cm	inch
A	78	30,7
B	51	20,1
C	53	20,9
D	46	18,1